

24320

NUTS

Material

Stainless steel (AISI 303, 1.4305).

Technical Notes

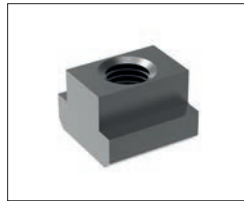
Produced to DIN 6330B.

Order No.	d_1	h_1	r_1	w_1	A/F	Weight g
24320.W0106	M 6	9	9	11.5	10	4
24320.W0108	M 8	12	11	15.0	13	8
24320.W0110	M10	15	15	18.5	17	17
24320.W0112	M12	18	17	20.8	19	24
24320.W0116	M16	24	22	27.7	24	55
24320.W0120	M20	30	27	34.6	30	110

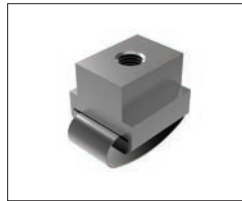


Nuts

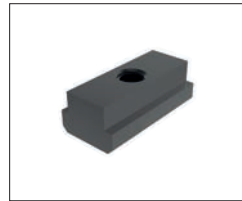
Available in heat treated steel, unless stated otherwise.



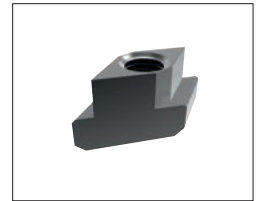
24000 T-Nut, Strength Class 10 DIN 508.



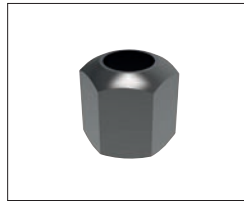
24010 T-Nut with Anti-Slip Device.



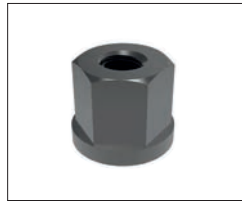
24100 Extended T-Nut. Strength Class 10.



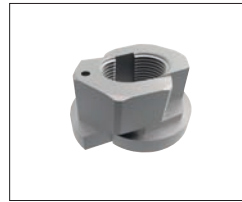
24120 Rhombus T-Nuts



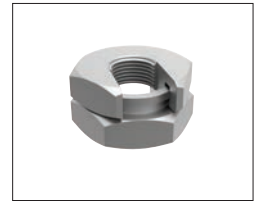
24300 Fixture Nuts. Strength Class 10 - DIN 6330B



24400 Collar Nuts, DIN 6331



24502 Fast Nut - With Collar Rapid Assembly Nut



24520 - Steel Slip-On Lock Nuts - Rapid Assembly Nut.



24600 Extension Nuts Strength Class 10.



24620 Swivel Nuts, Conical Seat

Washers

Available in a range of steel types - see product for details.



25000 - Hardened Steel - Plain Washers. DIN 6340.



25100 - Case Hardened Steel - Spherical Seat Washers. Type C - DIN 6319C.



25400 - Case Hardened Steel - Dished Washers, Type D - DIN 6319D.



25700 - Tempered Steel - Dished Washers, Type G - DIN 6319G.



25900 - Stainless Steel Compact Spherical Washer, Conical Seat, similar to DIN6319