

24420

NUTS

Material

Stainless steel (AISI 303, 1.4305).

*DIN standards do not include these dimensions.

Technical Notes

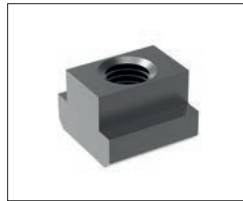
Produced to DIN 6331.

Order No.	d ₁	d ₂	h ₁	h ₂	w ₁	A/F	Weight g
24420.W0108	M 8	18	12	3.5	15.0	13	12
24420.W0110	M10	22	15	4.0	18.5	17*	22
24420.W0112	M12	25	18	4.0	20.8	19*	30
24420.W0116	M16	31	24	5.0	27.7	24	67
24420.W0120	M20	37	30	6.0	34.6	30	129

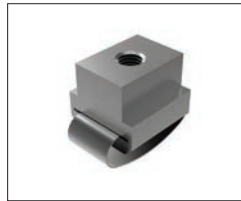


Nuts

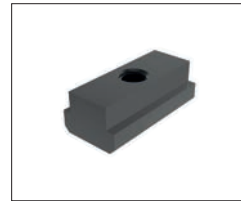
Available in heat treated steel, unless stated otherwise.



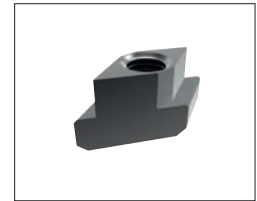
24000 T-Nut, Strength Class 10 DIN 508.



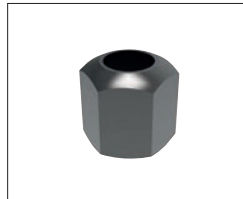
24010 T-Nut with Anti-Slip Device.



24100 Extended T-Nut. Strength Class 10.



24120 Rhombus T-Nuts



24300 Fixture Nuts. Strength Class 10 - DIN 6330B



24400 Collar Nuts, DIN 6331



24502 Fast Nut - With Collar Rapid Assembly Nut



24520 - Steel Slip-On Lock Nuts - Rapid Assembly Nut.



24600 Extension Nuts Strength Class 10.



24620 Swivel Nuts, Conical Seat

Washers

Available in a range of steel types - see product for details.



25000 - Hardened Steel - Plain Washers. DIN 6340.



25100 - Case Hardened Steel - Spherical Seat Washers. Type C - DIN 6319C.



25400 - Case Hardened Steel - Dished Washers, Type D - DIN 6319D.



25700 - Tempered Steel - Dished Washers, Type G - DIN 6319G.



25900 - Stainless Steel Compact Spherical Washer, Conical Seat, similar to DIN6319