

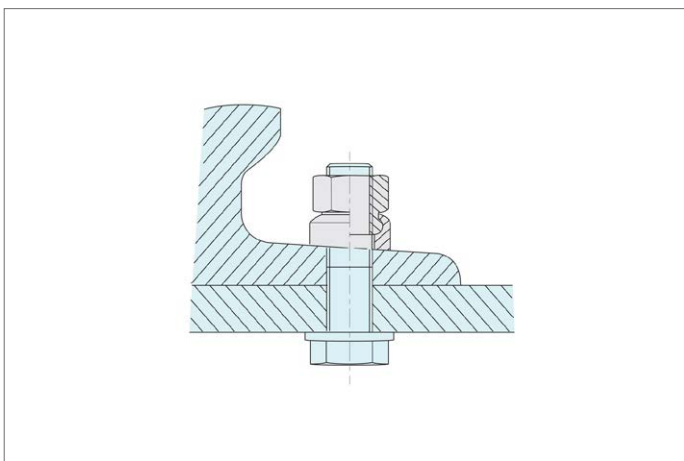
24620

NUTS

Material

Steel, heat-treated steel, tempered, blackened.

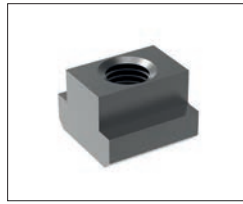
Order No.	Type	d ₁	h ₁	d ₂	d ₃	h ₂	A/F	Weight g
24620.W0508	Small	M 8	14.0	17	-	-	13	13
24620.W0510	Small	M10	17.5	21	-	-	16	24
24620.W0512	Small	M12	21.5	24	-	-	18	38
24620.W0516	Small	M16	28.0	30	-	-	24	75
24620.W0520	Small	M20	35.0	36	-	-	30	143
24620.W0524	Small	M24	42.5	44	-	-	36	261
24620.W0530	Small	M30	56.0	55	-	-	46	557
24620.W0608	Large	M 8	14.0	24	17.8	4.0	13	13
24620.W0610	Large	M10	17.5	30	21.2	5.5	16	16
24620.W0612	Large	M12	21.5	36	25.2	7.0	18	18
24620.W0616	Large	M16	28.0	44	30.9	8.0	24	24
24620.W0620	Large	M20	35.0	50	39.9	9.5	30	30
24620.W0624	Large	M24	42.5	60	49.6	11.0	36	36
24620.W0630	Large	M30	56.0	68	61.3	14.0	40	40



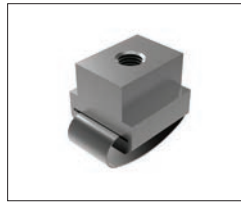


Nuts

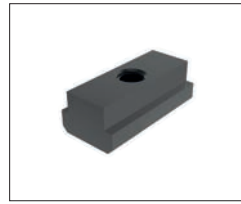
Available in heat treated steel, unless stated otherwise.



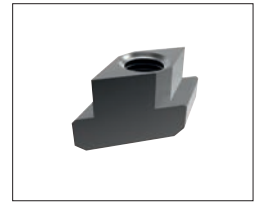
24000 T-Nut, Strength Class 10 DIN 508.



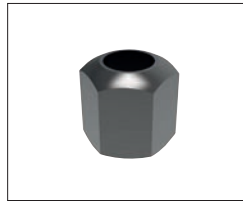
24010 T-Nut with Anti-Slip Device.



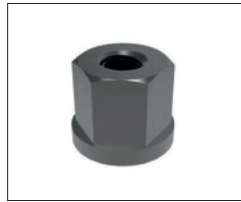
24100 Extended T-Nut, Strength Class 10.



24120 Rhombus T-Nuts



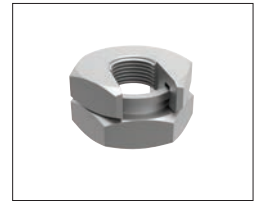
24300 Fixture Nuts, Strength Class 10 - DIN 6330B



24400 Collar Nuts, DIN 6331



24502 Fast Nut - With Collar Rapid Assembly Nut



24520 - Steel Slip-On Lock Nuts - Rapid Assembly Nut.



24600 Extension Nuts, Strength Class 10.



24620 Swivel Nuts, Conical Seat

Washers

Available in a range of steel types - see product for details.



25000 - Hardened Steel - Plain Washers, DIN 6340.



25100 - Case Hardened Steel - Spherical Seat Washers, Type C - DIN 6319C.



25400 - Case Hardened Steel - Dished Washers, Type D - DIN 6319D.



25700 - Tempered Steel - Dished Washers, Type G - DIN 6319G.



25900 - Stainless Steel Compact Spherical Washer, Conical Seat, similar to DIN6319