

## 25400

WASHERS

### Material

Steel, case-hardened.

### Technical Notes

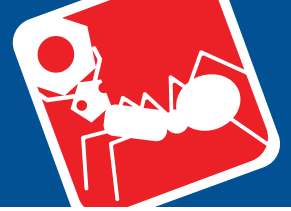
Produced to DIN 6319D.

### Tips

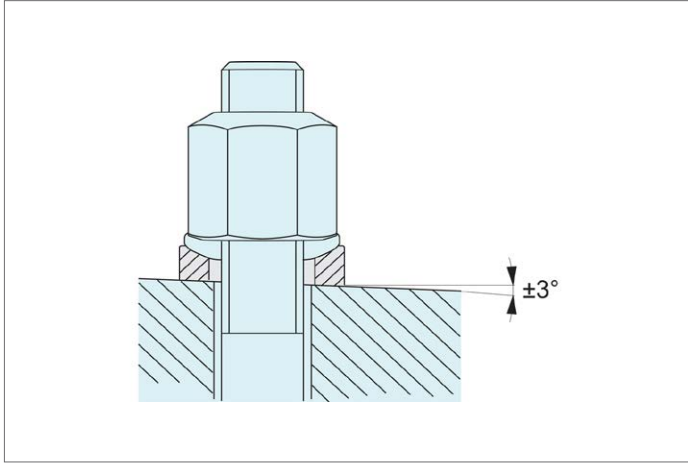
Do not use no. 25400 (type D) for clamping over holes or slots which do not provide full surface contact to the washer. In such

cases use no. 25700 (type G). Dimensions marked \* not available in DIN standard.

Order No.	For thread	For thread inch	d <sub>1</sub> tol. H13	d <sub>2</sub>	d <sub>3</sub>	h <sub>1</sub>	Load capacity for static load kN max.	With 25100 h <sub>3</sub>	Weight g
25400.W0106	M 6	1/4"	7.1	12	11.0	2.8	9	4.2	1
25400.W0108	M 8	5/16"	9.6	17	14.5	3.5	17	5.6	2
25400.W0110	M10	3/8"	12.0	21	18.5	4.2	26	6.5	7
25400.W0112	M12	1/2"	14.2	24	20.0	5.0	38	8.0	10
25400.W0114	M14	-	16.5	28	24.8	5.6	53	-	15
25400.W0116	M16	5/8"	19.0	30	26.0	6.2	73	9.6	18
25400.W0120	M20	3/4"	23.2	36	31.0	7.5	117	11.7	30
25400.W0122	M22	-	26,0*	40	34.0	8.5	146	-	44
25400.W0124	M24	7/8"	28.0	44	37.0	9.5	168	15.2	61
25400.W0127	M27	-	31,5*	50	43.0	10.5	221	-	90
25400.W0130	M30	1-1/8", 1-3/16"	35.0	56	49.0	12.0	269	19.2	124
25400.W0133	M33	-	38,5*	62	55.0	14.0	326	-	180
25400.W0136	M36	1-1/4", 1-3/8"	42.0	68	60.0	15.0	394	23.5	230
25400.W0139	M39	-	45,0*	75	67.0	17.0	460	-	339
25400.W0142	M42	1-1/2"	49.0	78	70.0	18.0	542	29.0	360
25400.W0148	M48	1-3/4"	56.0	92	82.0	22.0	714	35.5	640
25400.W0152	M52	-	60,0*	96	85.0	24.0	832	-	740
25400.W0156	M56	-	65,0*	103	93.0	25.0	960	-	900
25400.W0160	M60	-	70,0*	112	102.0	28.0	1122	-	1165
25400.W0164	M64	-	75,0*	120	110.0	30.0	1269	-	1430



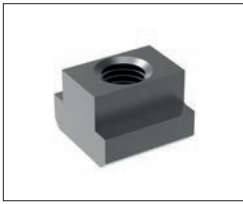
WASHERS



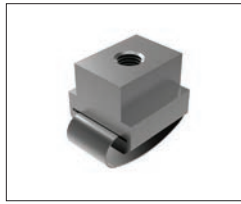


### Nuts

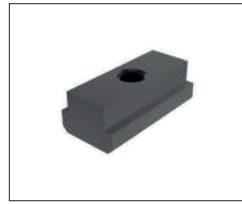
Available in heat treated steel, unless stated otherwise.



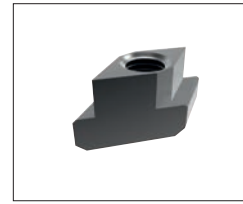
**24000** T-Nut, Strength Class 10 DIN 508.



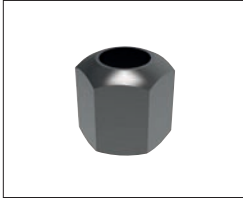
**24010** T-Nut with Anti-Slip Device.



**24100** Extended T-Nut. Strength Class 10.



**24120** Rhombus T-Nuts



**24300** Fixture Nuts. Strength Class 10 - DIN 6330B



**24400** Collar Nuts, DIN 6331



**24502** Fast Nut - With Collar Rapid Assembly Nut



**24520** - Steel Slip-On Lock Nuts - Rapid Assembly Nut.



**24600** Extension Nuts Strength Class 10.



**24620** Swivel Nuts, Conical Seat

### Washers

Available in a range of steel types - see product for details.



**25000** - Hardened Steel - Plain Washers, DIN 6340.



**25100** - Case Hardened Steel - Spherical Seat Washers, Type C - DIN 6319C.



**25400** - Case Hardened Steel - Dished Washers, Type D - DIN 6319D.



**25700** - Tempered Steel - Dished Washers, Type G - DIN 6319G.



**25900** - Stainless Steel Compact Spherical Washer, Conical Seat, similar to DIN6319