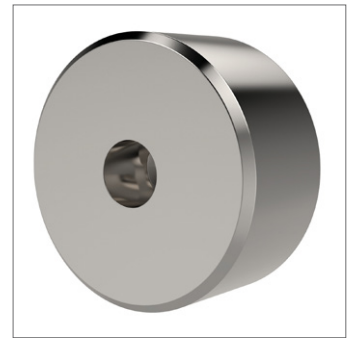
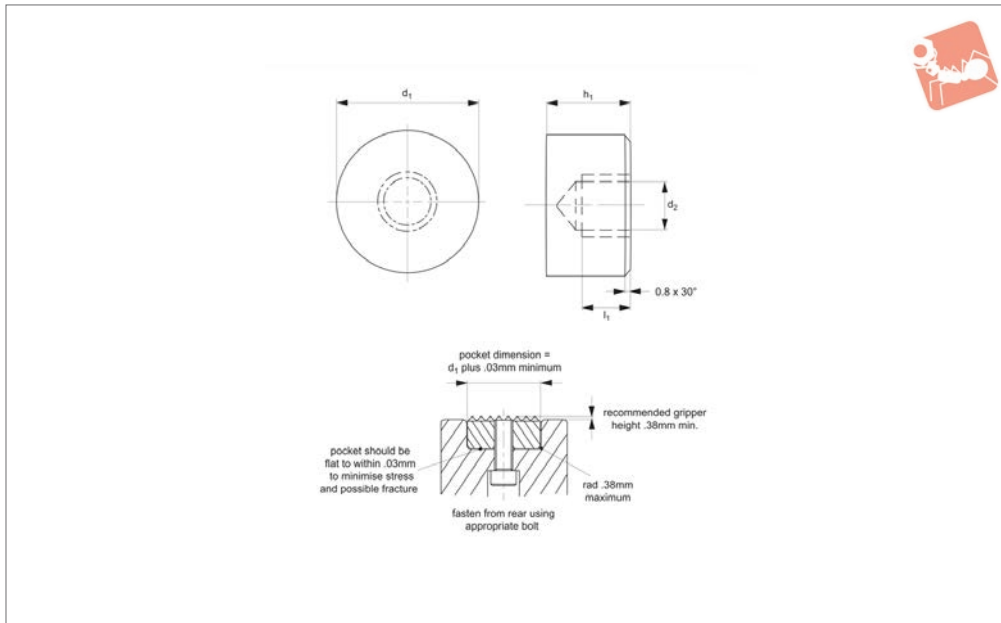




# Rest Pads - Stainless Steel

round - rear fixing

## Grippers & Rest Pads



**35982**

GRIPPERS & REST PADS

### Material

Stainless steel (AISI 630), hardened to HRC 43-46.

### Technical Notes

Can be used as rest pads, stops, supports

etc in jigs and fixtures.

### Tips

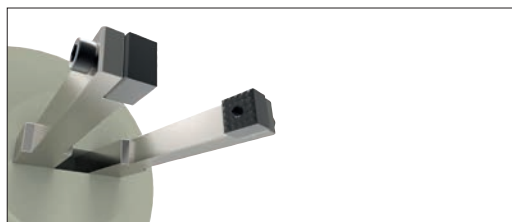
Can be fastened from rear using appropriate bolt, or alternatively via use of a differential screw. Note installation recom-

mendations in technical diagram.

Order No.	$d_1$ +0.00   -0.13	$d_2$	$h_1$ $\pm 0.03$	$l_1$
35982.W0080	8	M 4x0,7	10	5.0
35982.W0082	8	M 4x0,7	12	6.4
35982.W0100	10	M 5x0,8	10	5.0
35982.W0102	10	M 5x0,8	12	6.4
35982.W0120	12	M 5x0,8	10	5.0
35982.W0122	12	M 5x0,8	12	6.4
35982.W0160	16	M 6x1,0	10	5.0
35982.W0162	16	M 6x1,0	12	6.4
35982.W0200	20	M 6x1,0	10	5.0
35982.W0202	20	M 6x1,0	12	6.4
35982.W0250	25	M 6x1,0	10	5.0
35982.W0252	25	M 6x1,0	12	6.4



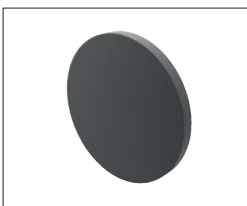
Grippers enhance workholding for multiple machining operations.



Grippers increase handling capability.

## Pads and Gripper Options

### Pads



**Solid Carbide**  
High impact carbide pads, can be brazed or bonded into place.



**Carbide Tipped**  
Constructed with high impact carbide pad brazed to a heat treated alloy steel body. Mount via tapped hole or a flat on the outside diameter for set screw mounting.



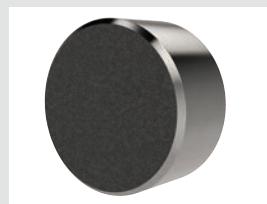
**Hardened Steel**  
Made from 8620 steel, carburized and hardened to Rc 58/60 1.2mm with black oxide finish. Mount via tapped or counter bored hole.



**Non-marking Thermoplast**  
Made from white thermoplast. Mount via tapped or counter bored hole.



**Stainless Steel**  
Pad from 17-4 stainless steel, hardened to Rc 43/46. Mount via tapped or counter bored hole.



**Abrasive Diamond Surface**  
Abrasive surface permanently fused to a 17-4 stainless steel pad, hardened to Rc 43/46. The surface texture is comparable to a 100 grit abrasive. Mount via tapped or counter bored hole.



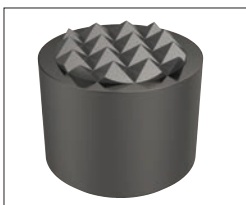
**Soft Urethane Surface**  
Urethane surface is permanently bonded to a 300 series stainless steel pad. The urethane provides excellent protection against damage on delicate work surfaces. Tapped hole mounting.

see our website for our full range:  
[wixroyd.com](http://wixroyd.com)

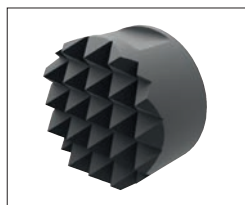
### Grippers



**High Speed Tool Steel**  
Manufactured from M-2 high speed tool steel, hardened to Rc 60/62 with black oxide finish. Mount via tapped hole, counter bored hole or a flat on the outside diameter for set screw mounting.



**Carbide Tipped**  
Constructed with high impact carbide pad brazed to a heat treated alloy steel body. Mounts via tapped hole or a flat on the outside diameter for set screw mounting.



**Solid Carbide**  
Manufactured from high impact carbide in a solid gripper pad or as a solid gripper body with a threaded brazed-in steel insert. Mount via tapped hole or a flat on the outside diameter for set screw mounting.