

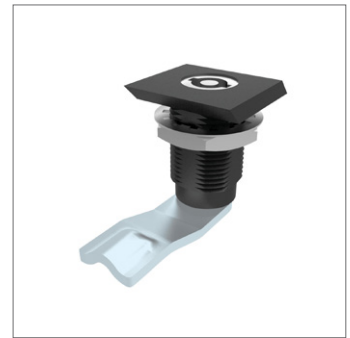
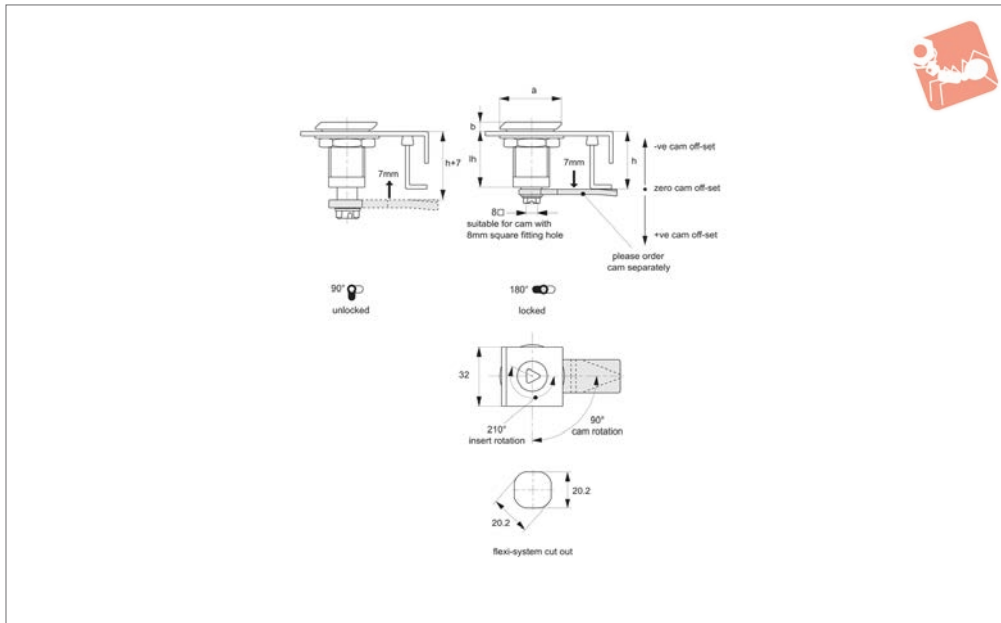


Compression Latches - Flexi-System

square face - fixed grip - zinc



Compression Latches



A1620

COMPRESSION LATCHES

Material

Body & insert: die cast zinc, black powder coated. Fitted with O'ring to provide IP54 rating.

Not supplied: CAM nor KEY - order separately.

Technical Notes

Order cam and key separately.

Cams: see suitable cam A0203 and A0224.

Select „without projection“ cam type.

Dimensions ch and cl relate to cam. Use formula to calculate ch (required cam off-set), and refer to cam selection chart;

ch = h - lh where;

ch = required cam off-set/height.

h = grip length (distance between inside of

latch face and front of cam).

lh = body length of cam latch/lock to be used (see product table below).

Keys: see A0102.

Order No.	Insert driver	Type	a	b	lh
A1620.AW0020	Square 8	Fixed	34	5	32
A1620.AW0040	Triangle 7	Fixed	34	5	32
A1620.AW0050	Triangle 8	Fixed	34	5	32
A1620.AW0080	Slot (2x4)	Fixed	34	5	32
A1620.AW0085	Hexagon 8	Fixed	34	5	32