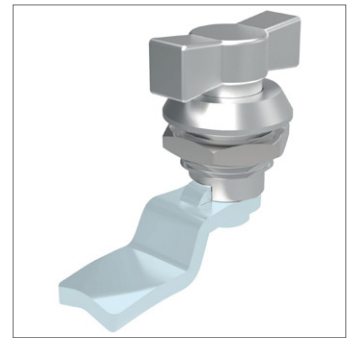
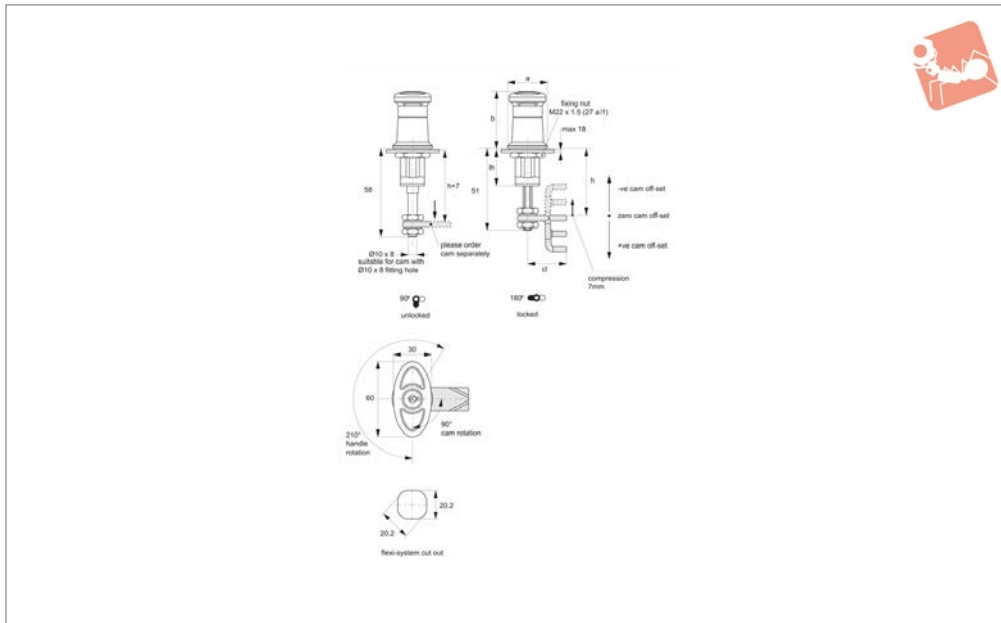




# Compression Lock - T-handle

T-handle - adjustable grip - zinc

## Compression Latches



### A1810

COMPRESSION LATCHES

#### Material

Body & handle: die cast zinc, nanometer coated.

Shaft: steel, white zinc plated.

**Supplied with:** Key.

**Not supplied:** CAM - order separately.

#### Technical Notes

Order cam and key separately.

**Cams:** see suitable cam A0231 and A0233.

Select „without projection“ cam type.

Dimensions  $ch$  and  $cl$  relate to cam. Use

formula to calculate  $ch$  (required cam off-set), and refer to cam selection chart;

**$ch = h - lh$**  where;

**$ch$**  = required cam off-set/height.

**$h$**  = grip length (distance between inside of latch face and front of cam).

**$lh$**  = body length of cam latch/lock to be used (see product table below).

**Keys:** see A0102.

#### Tips

Compression locks provide sealing of

enclosures to reduce vibration and to provide noise isolation.

Adjustable grip type has an extended stem which can be cut in length to best suit your application.

#### Action:

210° handle rotation, 90° cam rotation.

**Provides a 7mm compression stroke.**

Order No.	Lock type	a	b	lh
A1810.AW0032	Std. Cylinder	32	46	18
A1810.AW0132	Blank - No Lock	32	46	18



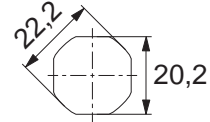
When selecting a Wixroyd Cam Latch for your application, you need to answer these questions:

1. Which installation cut out?
2. Which body style?
3. Which locking key?
4. Which accessories?
5. Which cam type and size?

## Step 1: Which installation cut out?

### Cut out

All our Flexi-System cam latches use a standard installation cut out 22,2 dia, 20,2 square, for maximum flexibility. We also provide a number of alternative cut out dimensions for legacy/historical installations.



flexi-system cut out

## Step 2: Which body style?

### Material and finish

Select from our variety of die cast zinc, polyamide plastic and stainless versions.



Die-cast zinc chrome plate

Die-cast zinc black coated

Polyamide black

Stainless steel

### Actuation and locking method

Standard insert driver type, cylinder lock or wing handle type.



Insert driver

Cylinder lock

Wing handle

### Number of latching points in application

Typically single point latching is required, but the Wixroyd Flexi-System also provides multi-point latching (typically 3 point - at lock point, top and bottom of cabinet).



Single point

Two point

Multi-point

## Step 3: Which locking key?

### Standard insert driver keys

Our range of insert driver cam latches require a simple key to actuate. Refer to part A0102 and A0103 for correct keys.



### Cylinder locking

Our cam locks with cylinder locks are supplied with two keys per lock. Available as keyed alike or keyed to differ locks.



## Step 4: Which accessories?

- Multi-point latching: use our rod set A0303 to A0325 for suitable rods and rod guides.
- Finger pulls: easily installed with any of our flexi-system cam bodies, finger pull no. A0352 is a simple, cost effective handle for your cabinets.
- Dust Cap: to reduce material ingress.

