

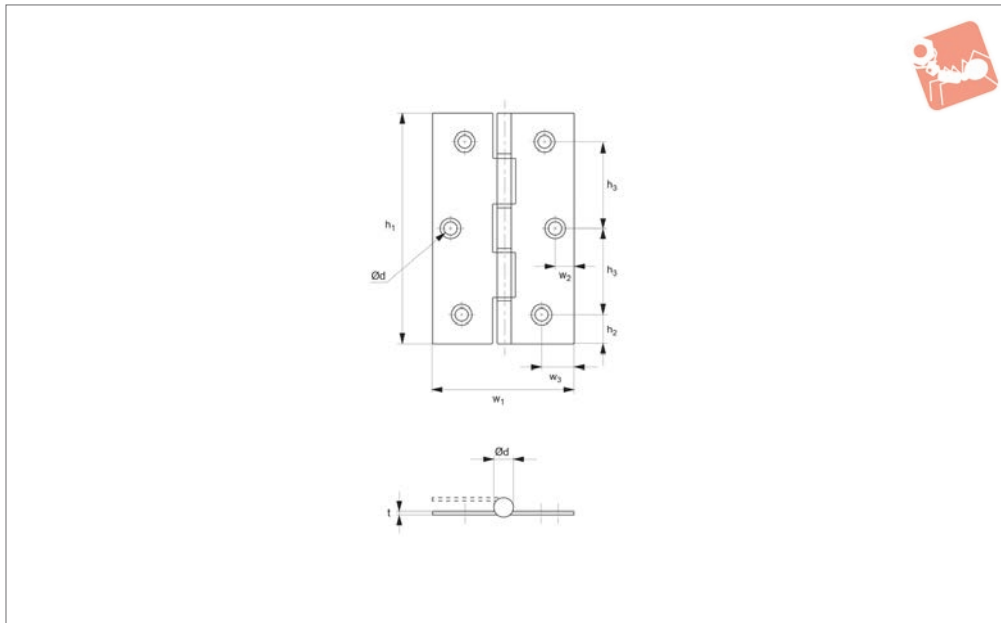


# Surface Mount - Leaf Hinges

screw mount - stainless steel



## Hinges



### S0720

HINGES

#### Material

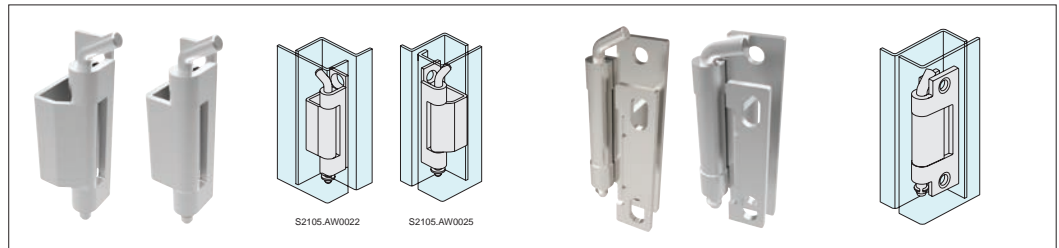
Stainless steel, AISI 304, polished finish.

Order No.	$h_1$	$h_2$	$h_3$	$t$	$w_1$	$w_2$	$w_3$	$d_1$	$d_2$	No. of knuckles	No. of mounting holes	Weight g
S0720.AC0005	51	7.5	36	0.8	34.5	-	6.5	4.8	4.4	5	4	15.2
S0720.AC0006	64	8.0	24	0.9	40.0	5.5	9.0	5.0	4.2	5	6	23.8
S0720.AC0007	76	10.0	28	1.0	46.0	7.5	10.0	6.0	4.5	5	6	37.8
S0720.AC0008	89	9.5	35	1.2	56.0	8.0	12.0	7.0	5.5	5	6	63.6
S0720.AC0010	102	10.5	27	1.4	66.5	9.0	12.0	8.0	5.5	5	8	96.4
S0720.AC0012	127	11.0	35	1.5	82.0	10.0	17.0	9.0	5.4	5	8	161.5

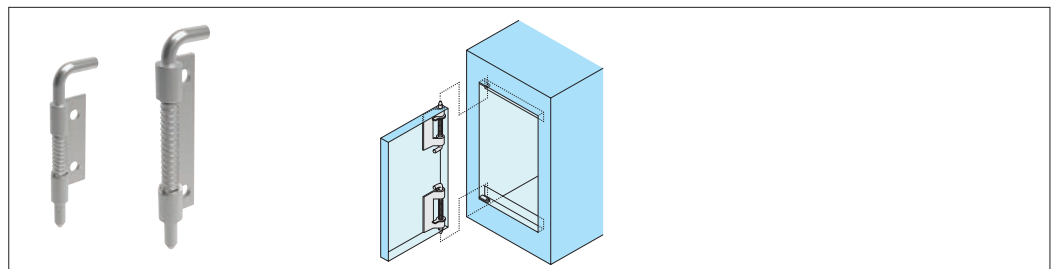


## Concealed hinges

For added security or a sleek enclosure design, concealed hinges offer the solution with mounting discreetly hidden away from view to avoid tampering.



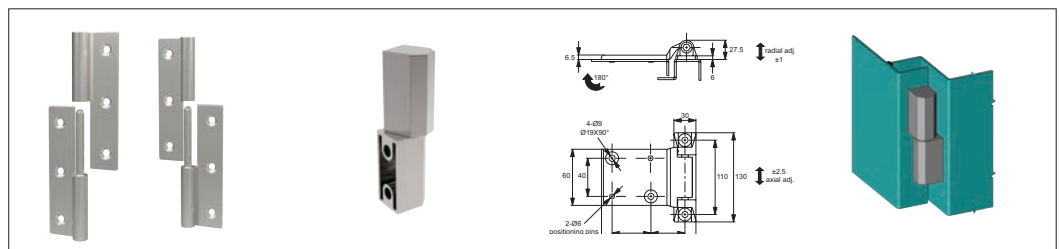
Concealed pivot hinges



End mount concealed pivot hinges

## Door removal hinges

Door removal or lift-off hinges simplify removal of covers and panels to ease access for maintenance and repair, available in a selection of materials.



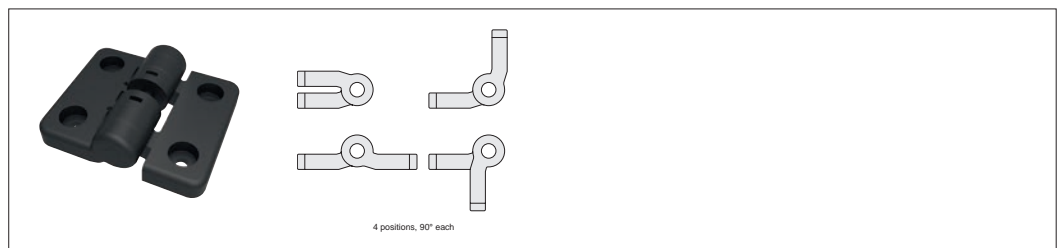
Lift off hinges

## Torque and positioning hinges

Torque and positioning hinges offer positive location of panels, screens and displays using constant friction for a firm hold.



Constant torque hinges



Detent positioning hinges



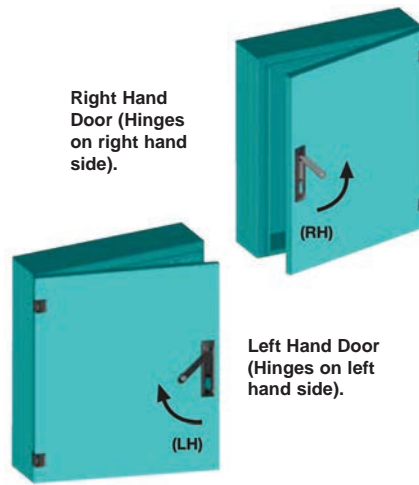
Wixroyd have a diverse range of hinges to suit most industrial applications in a wide range of materials and finishes.

Throughout our catalogue we refer to parts as being of a "Left" or "Right" type or hand. Which type you need, is most easily explained as follows;

Oriente your application so that when opened the door/panel comes towards you. With this orientation in mind, look to see on which side of the door/panel the hinges are mounted?

If the hinges are on the left side of the door/panel then you require "Left" type products. If the hinges are on the right side of the door/panel then you require "Right" type products.

The illustration on the right clearly indicates the layout and orientation of the door where a "left" or "right" product is used.

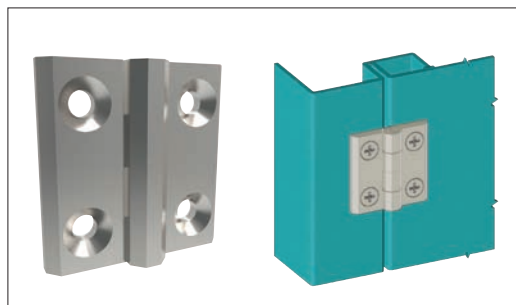


**Left or right type:  
Which do you need?**

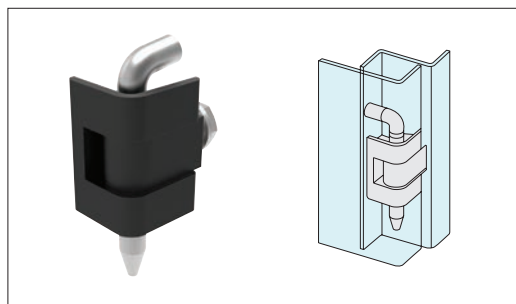
## Hinges

External or surface mount hinges have a wide range of application on electrical panels, sheet metal enclosures, generators and heating and venting applications.

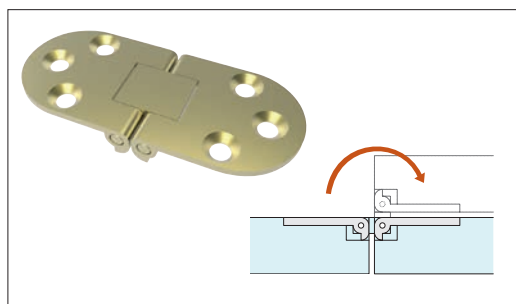
## External hinges



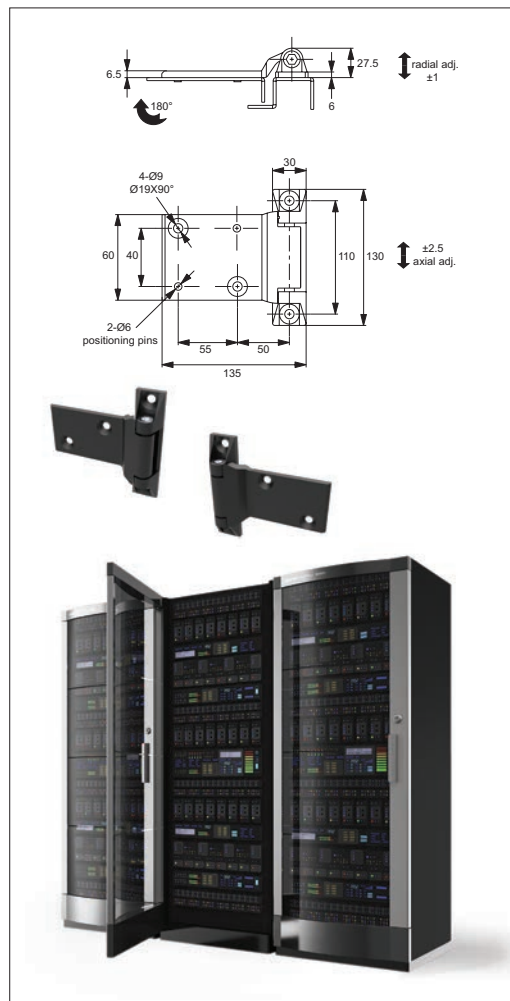
Surface mount hinges



Corner hinges



Flush mount hinges



Surface mount hinges

HINGES

ov-WS0050-A-T-WS2300-A-TH1200-wide-range-of-solutions-b-rnh - Updated - 01-11-2022