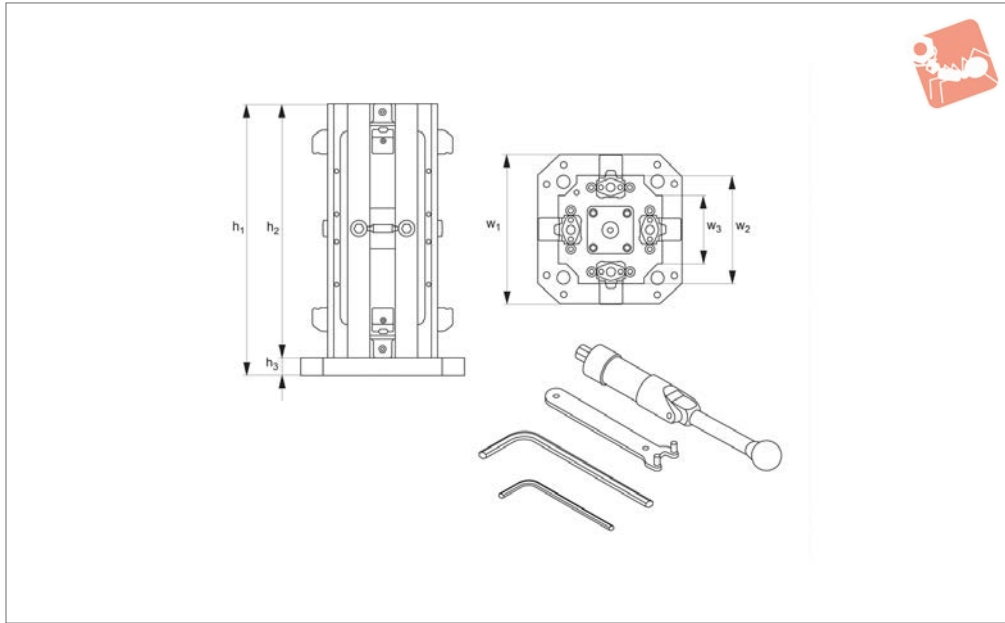




8 Station Vice - ReLock 8 converts a double to single station vice

Vice Clamping



19762

VICE CLAMPING

Material

Body: 80000 PSI ductile cast iron.
Sideways flame hardened to 40 HRC max.

Technical Notes

Vice jaws not included, order separately.
See part no. 19790.
Jaw capacity dependent upon selection of either machinable or hard jaws. See technical pages.

Replacement parts available.

Tips

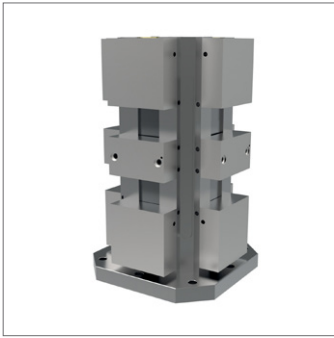
Supplied with actuation handle, hex key and wrench.
Base plate designed to adapt to wide range of machine tables.
8-station vice columns can be located on a

pallet using edge location with shims or spacers (not supplied).

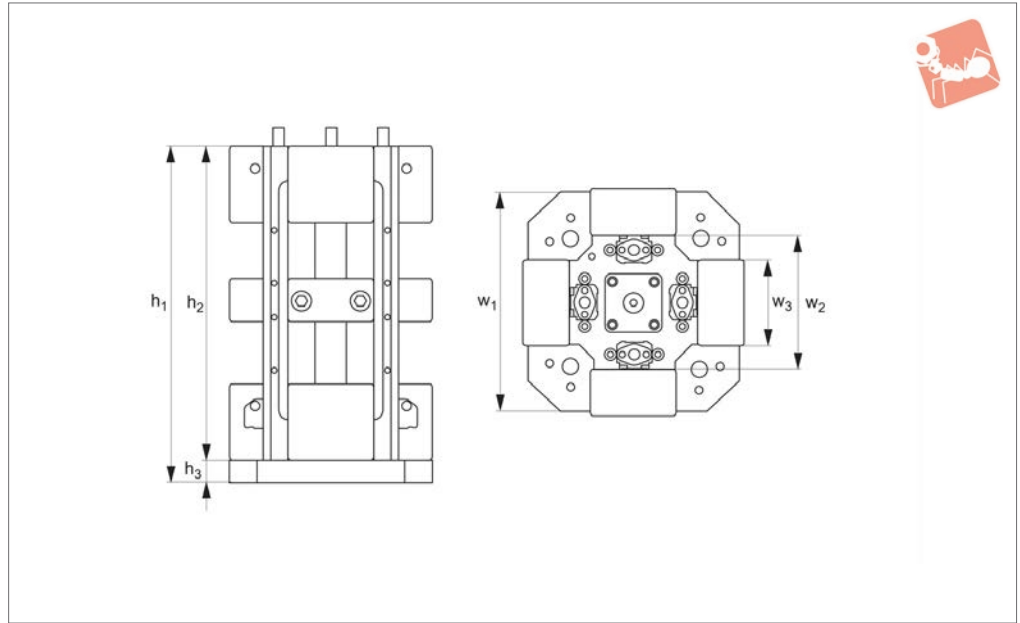
Important Notes

Not compatible with 19768 compact 8-vice column.
All dimensions are in inches unless stated *.

Order No.	Vice size	Clamp pressure lb max.	Base type	h_1	h_2	h_3	w_1	w_2 ± 0.001	w_3	Weight lb
19762.W0040	4"	6000	Inch	17.90	16.75	1.15	10.75	7	4	150
19762.W0041	4"	6000	Metric	17.90	16.75	1.15	400*	7	4	150
19762.W0060	6"	12000	Inch	22.65	21.25	1.40	14.00	9	6	280
19762.W0061	6"	12000	Metric	22.65	21.25	1.40	400*	9	6	280
19762.W0080	8"	16000	Inch	31.10	29.50	1.60	18.00	12	8	750



19764



VICE CLAMPING

Material

Body: 80000 PSI ductile cast iron.
Sideways flame hardened to 40 HRC max.
Machinable jaws: aluminium.

Technical Notes

Replacement parts available.

Tips

Supplied with actuation handle, hex key and wrench.
Base plate designed to adapt to wide range of machine tables.
8-station vice columns can be located on a

pallet using edge location with shims or spacers (not supplied).

Important Notes

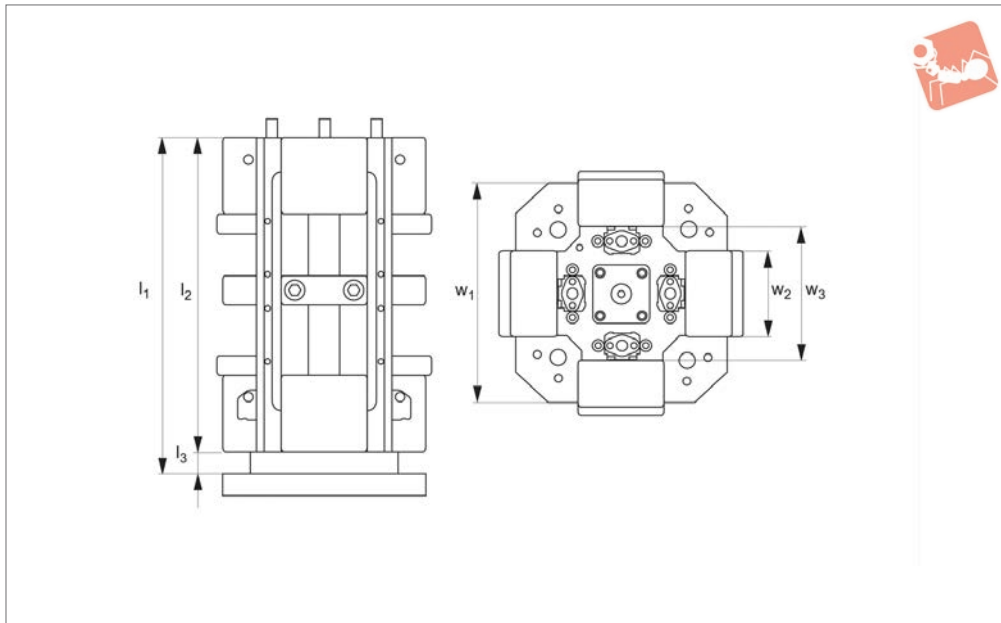
All dimensions are in inches unless stated *.

Order No.	Vice size	Set contents	Clamp pressure lb max.	Base type	Jaw capacity	h_1	h_2	h_3	w_1	$w_2 \pm 0.001$	w_3	Weight lb
19764.W0040	4"	Vice - 1 x 19762.W0040, Machinable jaws - 4 x 19790.W0401	6000	Inch	4,125 to 15,000	17.90	16.75	1.15	10.75	4	7	160
19764.W0041	4"	Vice - 1 x 19762.W0041, Machinable jaws - 4 x 19790.W0401	6000	Metric	4,125 to 15,000	17.90	16.75	1.15	400*	4	7	160
19764.W0060	6"	Vice - 1 x 19762.W0060, Machinable jaws - 4 x 19790.W0601	12000	Inch	5,125 to 19,500	22.65	21.25	1.40	14.00	6	9	292
19764.W0061	6"	Vice - 1 x 19762.W0061, Machinable jaws - 4 x 19790.W0601	12000	Metric	5,125 to 19,500	22.65	21.25	1.40	400*	6	9	292
19764.W0080	8"	Vice - 1 x 19762.W0080, Machinable jaws - 4 x 19762.W0801	16000	Inch	7,625 to 27,500	31.10	29.50	1.60	18.00	8	12	764



8 Station Vice - ReLock 8 with hard jaws

Vice Clamping



19766

VICE CLAMPING

Material

Body: 80000 PSI ductile cast iron.
Sideways flame hardened to 40 HRC max.
Carrier jaws: aluminium.
Hard jaws: steel.

Technical Notes

Replacement parts available.

Tips

Supplied with actuation handle, hex key and wrench. Base plate designed to adapt to wide range of machine tables.
8-station vice columns can be located on a pallet using edge location with shims or spacers (not supplied).

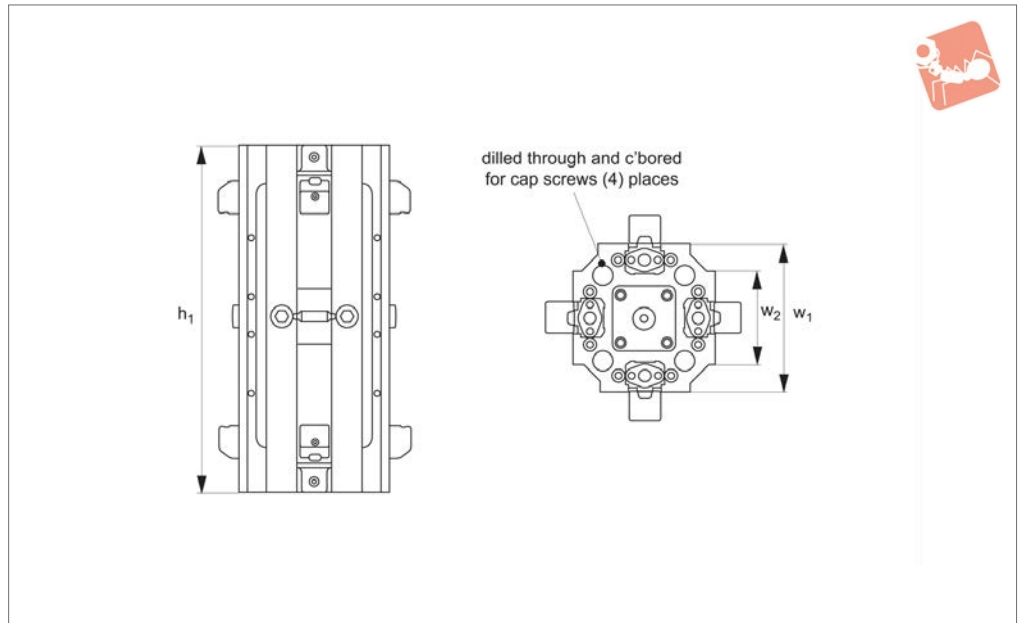
Important Notes

All dimensions are in inches unless stated *.

Order No.	Vice size	Set contents	l_1	Clamp pressure lb max.	Base type	Jaw capacity	l_2	l_3	w_1	w_2	w_3 ± 0.001	Weight lb
19766.W0040	4"	Vice - 1 x 19762.W0040, Carrier jaws - 4 x 19796.W0403,17,90 Hard jaws - 4 x 19892.W0401		6000	Imperial	4,125 to 15,000	16,75	1,15	10,75	4	7	170
19766.W0041	4"	Vice - 1 x 19762.W0041, Carrier jaws - 4 x 19796.W0403,17,90 Hard jaws - 4 x 19892.W0401		6000	Metric	4,125 to 15,000	16,75	1,15	400*	4	7	170
19766.W0060	6"	Vice - 1 x 19762.W0060, Carrier jaws - 4 x 19796.W0603,22,65 Hard jaws - 4 x 19892.W0601		12000	Imperial	5,125 to 19,500	21,25	1,40	14,00	6	9	305
19766.W0061	6"	Vice - 1 x 19762.W0061, Carrier jaws - 4 x 19796.W0603,22,65 Hard jaws - 4 x 19892.W0601		12000	Metric	5,125 to 19,500	21,25	1,40	400*	6	9	305
19766.W0080	8"	Vice - 1 x 19762.W0080, Carrier jaws - 4 x 19796.W0803,31,10 Hard jaws - 4 x 19892.W0801		16000	Imperial	7,625 to 27,500	29,50	1,60	18,00	8	12	780



19768



Material

Body: 80000 PSI ductile cast iron.
 Sideways flame hardened to 40 HRC max.
 Machinable jaws: aluminium.
 Carrier jaws: aluminium.
 Hard jaws: steel.

Technical Notes

Jaw capacity dependent upon selection of

either machinable or hard jaws, see technical pages.
 Designed for machining centres with small working envelopes. Through mounting holes are included to mount directly to a pallet without the need for a base plate.

Tips

Supplied with actuation handle, hex key

and wrench and mounting kit.
 Adaptor plate 19770 can be used to attach this compact vice column to a pallet or indexer.

Important Notes

All dimensions are in inches.

Order No.	Vice size	Set contents	Clamp pressure lb max.	Jaw capacity	Recommended foot lb	h_1	w_1 ± 0.001	w_2
19768.W0010	4"	Vice - 1 x 19768.W0010. No jaws.	6000	-	45-50	13.9	7	4
19768.W0020	4"	Vice - 1 x 19768.W0010, Machinable jaws - 4 x 19790.W0401.	6000	2,700 to 12,150	45-50	13.9	7	4
19768.W0030	4"	Vice - 1 x 19768.W0010, Carrier jaws - 4 x 19796.W0403, Hard jaws - 4 x 19792.W0401.	6000	1,575 to 13,150	45-50	13.9	7	4

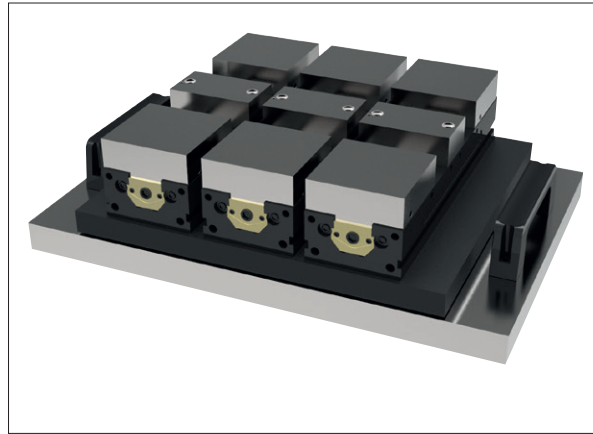


ReLock 2 and 8-Station Capacities

19752 - 19766
Clamping & Height Setting



The compact design of the ReLock vice allows you to mount the vices very closely to each other without interference. The SnapLock line of jaws allows you to literally “snap” jaws and accessories on and off the vice without the use of bolts or pins.



VICE CLAMPING

ReLock 2 and 8-Station Capacities

Jaw type/configuration	Vice size		
	4"	6"	8"
Machinable jaws			
	4,125	5,125	7,625
	6,875	9,060	12,812
	9,500	11,625	17,125
	12,250	15,562	22,312
	15,000	19,500	27,500
Carrier and hard jaws	4"	6"	8"
	3,000	4,000	6,000
	7,375	9,500	13,250
	7,250	9,500	14,000
	11,625	15,000	21,250
	16,000	20,500	28,500

Maximum workpiece capacities for selected vice configuration. All dimensions in inches.

Workpiece

Vice jaws

All dimensions in inches

ov-W19752-A-T-W19766-A-T-relock-2-and-8-station-capacities-rmh - Updated - 25-10-2022



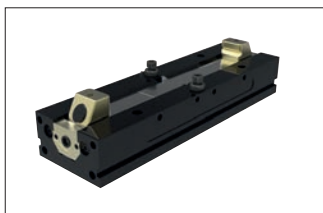
The ReLock Vice System combines high manufactured tolerances with unequalled versatility in providing two-station and 8-station production vices.

ReLock CNC Vices, available with machinable soft jaws, hard jaws, master jaws and parallels, or fixture plates, allow the machinist a variety of configurations with the same vice. Bodies are manufactured from 80,000 psi ductile cast iron, and guide parts are flame hardened and ground to accuracies of $\pm 0,0005''$.

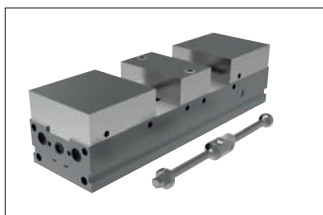
Manual and hydraulic two-station and 8-station vices are available in widths of 4", 6" and 8".

Advantages

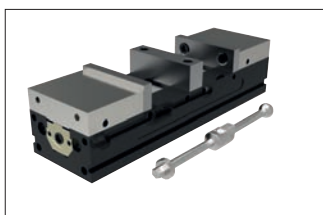
- Reduced setup times - when used with out SnapLock system, jaws can be changed or indexed in a matter of seconds.
- Extremely versatile: comprehensive array of jaws and accessories for vertical or horizontal machining.
- Accurate and durable: designed and precision manufactured from high grade materials.



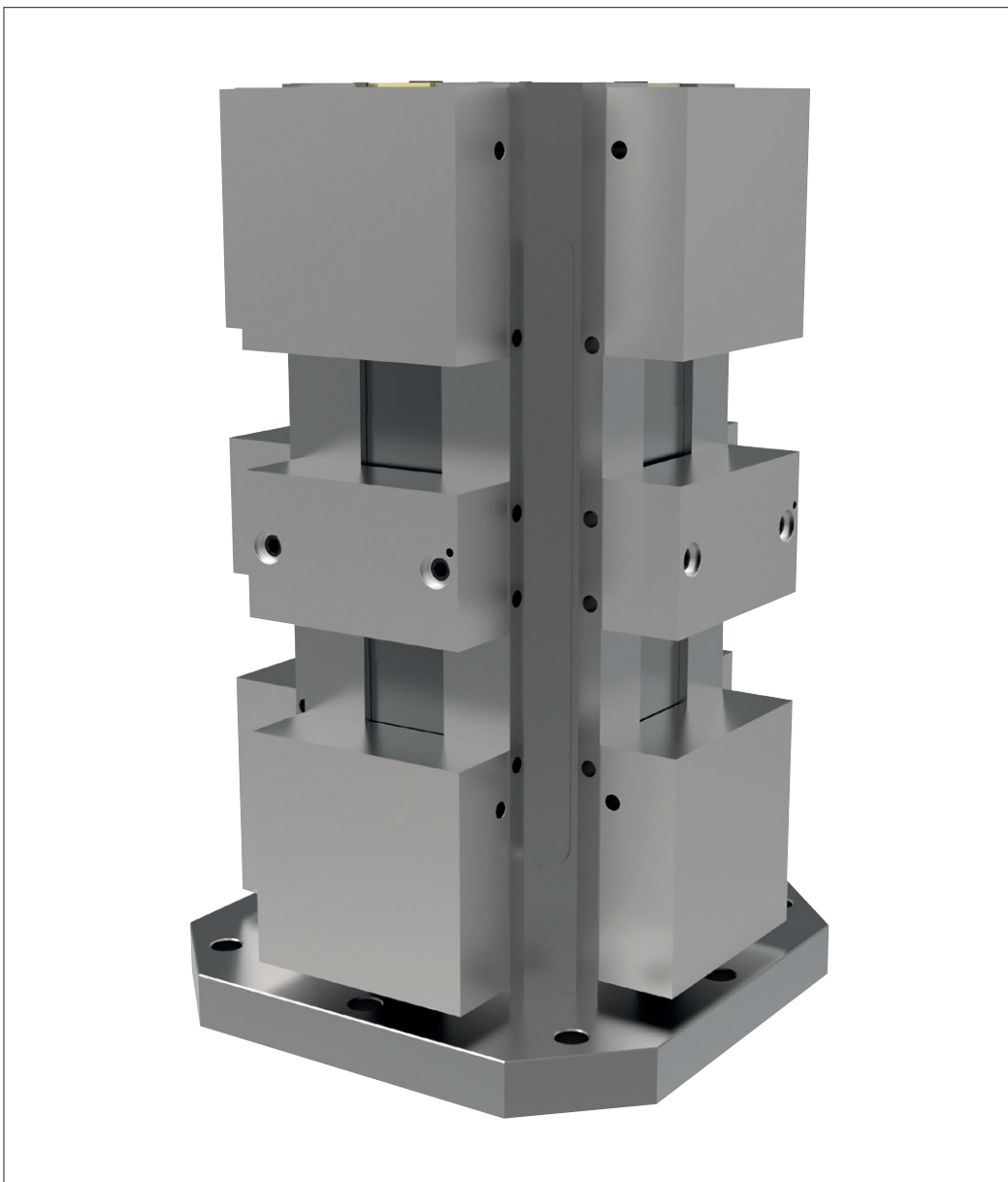
19752 Double Station Vice.



19754 Double Station Vice with soft jaws.



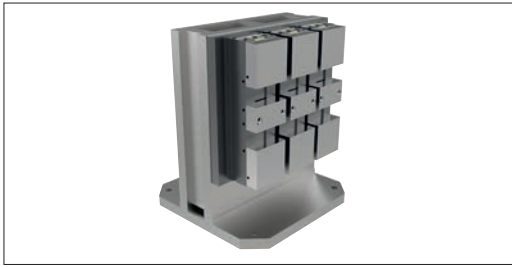
19756 Double Station Vice with hard jaws.



19764 8-Station Vice with soft jaws.

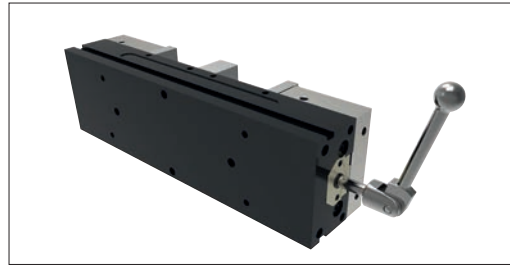


Features and Benefits



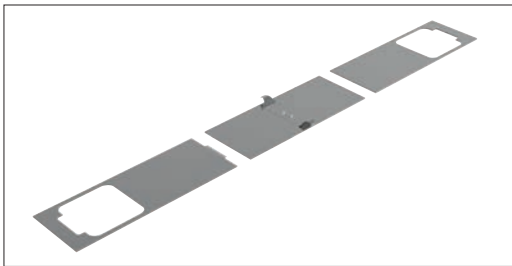
Optimised Table Space

Compact modular design allows a multitude of mounting configurations. Vices can be mounted close together without hindering the removal or attachment of jaws. The ReLock 8-station (shown) is ideal for horizontal machining centres, as well as for use with rotary indexers on vertical machining centres.



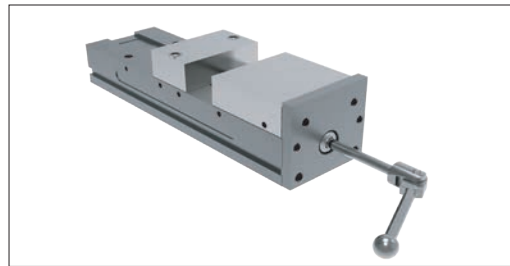
Locating and Mounting

Locating and mounting options are simple and accurate. The bottom surface of the system has four precision dowel pin holes for locating and four drilled and counterbored holes drilled through from the top surface for rugged mounting. Side clamp slots are also incorporated.



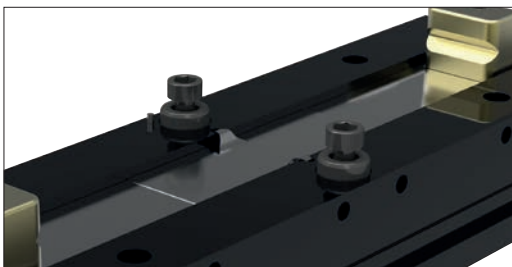
ReLock Chip Shields

ReLock's unique three piece telescopic chip shield wraps completely around the SnapLock knuckles, keeping swarf from getting into the vice's clamping mechanism. Shields can be quickly and easily removed for maintenance purposes.



Single Station Conversion

Used in conjunction with SnapLock carrier jaws, the conversion plate allows the ReLock system to be converted from a double to a single station vice – ideal for larger workpieces.



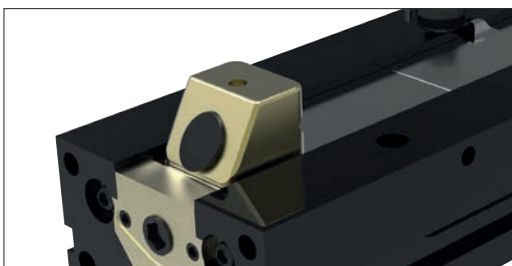
Centre Jaw Location

The ReLock's centre jaw locating studs allow quick jaw mounting and indexing to accuracies of $\pm 0.0005"$. Foolproof pin eliminates the possibility of the jaws being accidentally mounted in reverse.



SnapLock Knuckle

Exclusive SnapLock knuckle allows SnapLock soft jaws and SoftLock carrier to be attached and removed in seconds.

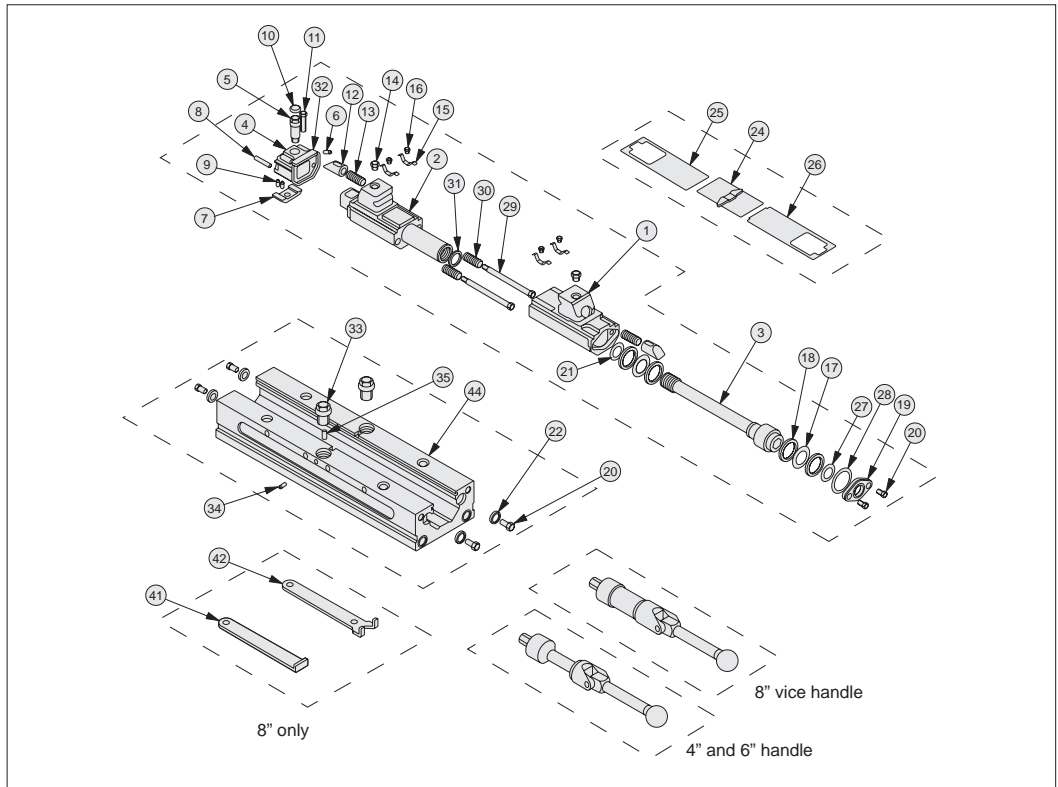


Auto Offset Mechanism

Exclusive automatic offset mechanism allows non-simultaneous workpiece clamping and unclamping to one of the three optional offset settings: 4" and 6": 0.030", 0.125", or 0.250"; 8": 0.125", 0.250", or 0.375". The offset setting is the distance the rear jaw backs away from the workpiece before the front jaw begins to back away from the workpiece.

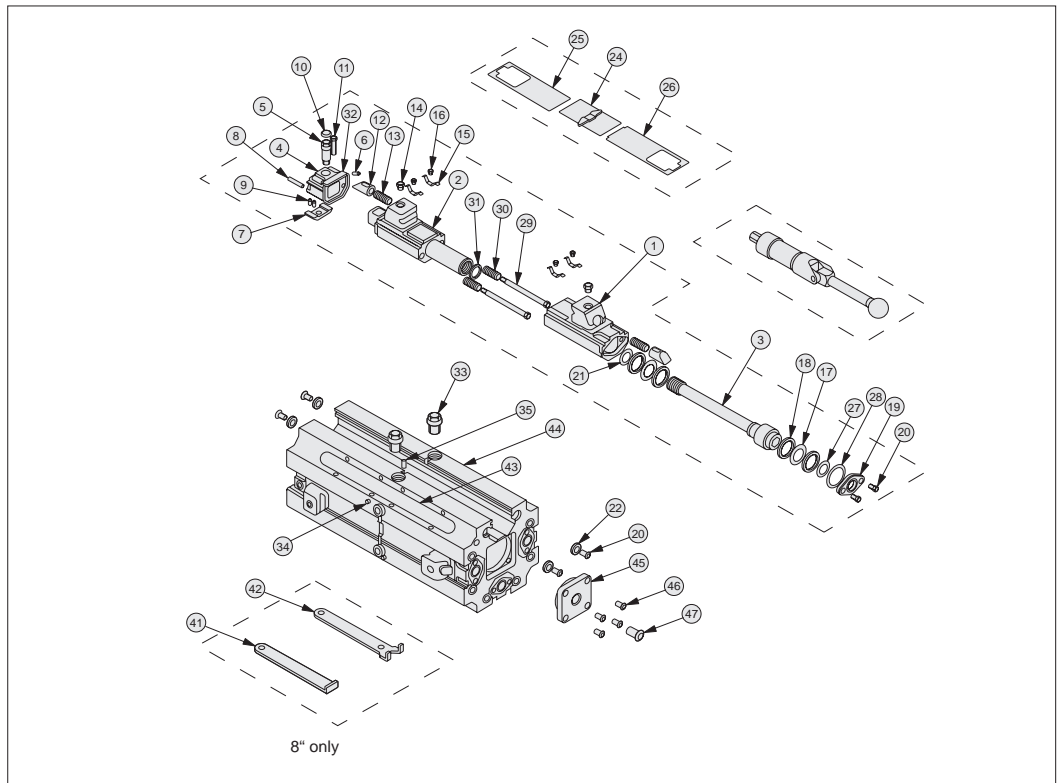


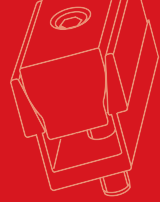
Spares available on request.
Please contact our sales office.



VICE CLAMPING

Spares available on request.
Please contact our sales office.



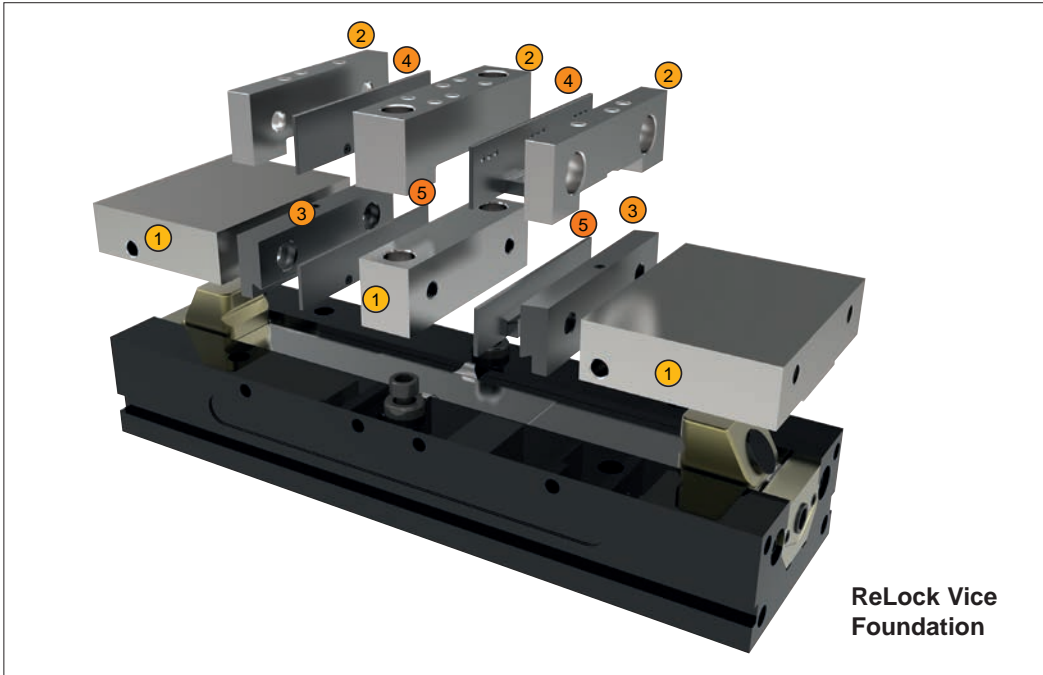


Foundation

The ReLock vice is the foundation for a fully flexible vice system, with a multitude of interchangeable jaws, parallels or mill angles to suit your application.

Base vice - ReLock 2 or ReLock 8.

- SnapLock® Carrier Jaws - accepts both AccuSnap® and QuickChange™ Jaw systems.
- AccuSnap or QuickChange Parallels and Mill Angles - select the approach best suited to your application.



Flexibility

1 SnapLock Carrier Jaws

SnapLock carrier jaws allow mounting of AccuSnap and QuickChange master jaws by using an industry standard bolt size and pattern. Carrier jaws snap on and off the SnapLock knuckles in seconds.

2 3 AccuSnap and QuickChange Master Jaws

AccuSnap QuickChange master jaws easily mount to the SnapLock carrier jaws by using an industry bolt size and pattern. AccuSnap master jaws patented locking receptacle accepts all AccuSnap accessories.

4 5 AccuSnap and QuickChange Parallels

AccuSnap and QuickChange parallels are designed for a range of set up variations when you need to position a workpiece between hardened jaws. AccuSnap parallels snap in and out of the AccuSnap master jaws in seconds. QuickChange parallels slide into position via a dovetail slot and gib.

Also available:

Machinable Fixture Jaws

AccuSnap and QuickChange machinable fixture jaws can be customised quickly to fixture a wide range of workpieces. The jaws snap or slide in and out of the master jaws in seconds. Available in either aluminium or hardened steel.

SnapLock Reversible Machinable Fixture Jaws

SnapLock reversible machinable fixture jaws are the most versatile method of fixturing on the ReLock System. Customising options are endless. Jaws can be machined on two faces for additional set up. Manufactured from high quality aluminium.

Fixture Plate

Ideal for a wide variety of fixturing applications, such as holding many small parts or parts with difficult clamping or locating requirements. Fixture plates can be attached or removed in seconds and are offered in two widths. Manufactured from high quality aluminium.

Modular Workstops

AccuSnap modular workstops quickly mount to parallels in many different positions. As many as three stops can be mounted to a single parallel to accommodate multi-piece set-ups.

Universal Workstop

The universal workstop easily mounts to the side of the ReLock in numerous positions. Optional extension is available for larger workpieces.

Workstop Presetting Gauge

The AccuSnap workstop presetting gauge, in combination with a standard micrometer, allows you to precisely preset your modular workstop positions in relation to the X, Y, and Z machine datums.

Single Station Conversion Plate

The single station conversion plate quickly converts the ReLock from double station to single station vice for larger workpieces.



Initial Cleaning

After unpacking your vice and checking the contents, wipe all surfaces with a clean rag or cloth to remove any debris or rust inhibitor that is present. This will ensure that the vice will operate at its maximum efficiency.

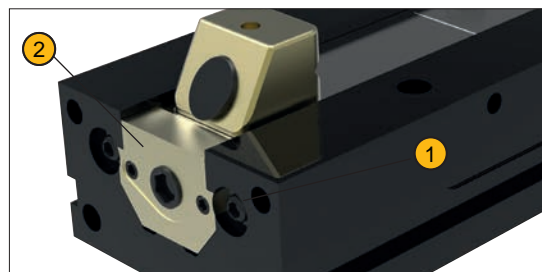
Operating Instructions

Behind the rear knuckle (opposite the handle end) you will find two hex screws. One is to adjust the automatic offset mechanism (discussed later) and the other is to adjust the brake mechanism for the vice (see drawing A).

Tighten Brake Mechanism

Simply tighten the brake screw in a clockwise rotation until it is snug. **DO NOT OVERTIGHTEN.** Failure to set brake properly will:

- not allow vice to open and close properly and/or
- will not allow the automatic offset mechanism to operate correctly.



1 Offset Mechanism

2 Break assembly

Drawing A

Do not fully close vice without jaws properly mounted on vice knuckles.

The ReLock vice should only be fully closed when:

- a three piece SnapLock Machine Jaw Set is on vice
- a SnapLock Carrier Jaw Set and AccuSnap or QuickChange Master Jaw configuration is on vice

Failure to do this could result in damage to the centre chip shield.

Automatic Offset Mechanism

Behind the rear knuckle (opposite the handle end) you will find two hex screws. One is to adjust the automatic offset mechanism and the other is to adjust the brake mechanism for the vice (see drawing A on previous page). The automatic offset mechanism allows the user to set the distance that one jaw will break (i.e. open) before the next jaw breaks. The offset can be set to three distances: .030, .125, .250. The automatic part of the mechanism allows the user to change workpiece sizes without any further adjustment to the offset mechanism. For example: You set your offset to .250 and you are setting up a job that the workpiece is a 3" square then you switch to the next job where the workpiece is 4" square, the offset mechanism will automatically break the back jaw .250 for both workpieces. Similarly, you can change the offset for both jobs simply by turning the adjustment screw to the desired distance. This feature is especially useful in a horizontal machining centre application. This will prevent both workpieces from falling out of your fixture at the same time and allows you to set the distance.

Jaw Opening & Closing

When closing the vice, the front jaw (handle end) will open first. Once contact is made to the workpiece, the back jaw will move. When contact is made by the back jaw both jaws will tighten together to your desired pressure. **DO NOT OVER-TORQUE VICES.** Over-torquing will cause damage to the vice and could cause harm to the operator.

Recommended clamping pressures:

4": 0-6,000 lbs. 6": 0-12,000 lbs. 8": 0-16,000 lbs.



Mounting Information

2-station Vices

This vice has two, standard mounting options:

1. The bottom of the vice has four (4) locating holes and four (4) cap screw holes for mounting. The cap screw holes can be accessed through the top of the vice. When SnapLock Jaws are mounted on the vice the cap screw holes are completely covered preventing any coolant, fluid or chips from entering the holes. This option will allow you to mount vices very close to each other without interference.
2. The other option is to utilise the slots on either side of the vice in conjunction with toe or strap clamps.

8-station Vices

All standard baseplates come with a 50mm centre bushing and edge locating. Please refer to catalogue for specific mounting specifications.

Maintenance and Cleaning

Like any piece of quality equipment, the ReLock vice will need to periodic cleaning and maintenance to prevent lock-up and ensure maximum efficiency. The entire side segment of the vice can be easily removed and replaced.

1. Remove all jaws and accessories from the vice.
2. Remove the two retaining screws on one of the ends (or top only of 8-Station Vice).
3. Loosen the brake mechanism to allow the segment to slide freely. Do not remove screw.
4. Use the SnapLock pry wrench to lift and slide the centre chip shield locking wings onto bed of vice.
5. Slide the entire segment out of the vice way.
6. Be sure to set the chip shields aside until needed for re-assembly.
7. Place segment on table or flat surface.
8. Use the vice handle to separate the two sections of the slide segment making sure that the segment does not turn with the lead screw.
9. Remove rubber seal from the lead screw and inspect for damage.
10. Completely clean all surfaces and holes from all coolant, fluids and chips.
11. Grease both the external and internal threads of the lead screw.
12. Remove the two screws from the handle end of the front segment and remove plate.
13. Push the lead screw through the front segment to expose thrust washers.
14. Grease all thrust washers, push front segment back onto lead screw and replace plate with screws.
15. Remove the screw from the top of each knuckle and grease the SnapLock plunger assembly.
16. Re-assemble plunger assembly.
17. Clean entire vice body especially the centre way before re-assembling vice.
18. Place seal back onto the lead screw making sure to push it past the threads.
19. Assemble two slide segment units back together by again preventing the segments from turning while screwing the lead screw back into the rear segment.
20. Once external threads are not visible, place the seal back into the slot provided by using a small screwdriver or tool. Make sure that the seal is properly installed. Failure to do this can result in damage to the vices' internal mechanisms.
21. Place the outside chip shields onto the proper knuckles. Shields are notched to fit only one end. Failure to do this will allow coolant and chips into the lead screw area and cause binding.
22. Slide rear segment into the vice.
23. Place the centre chip shield into the slot prying the wings onto the bed of the vice.
24. Slide the rest of the segment in to position making sure that the outside chip shields slide under the centre chip shield.
25. Replace retaining screws in vice.

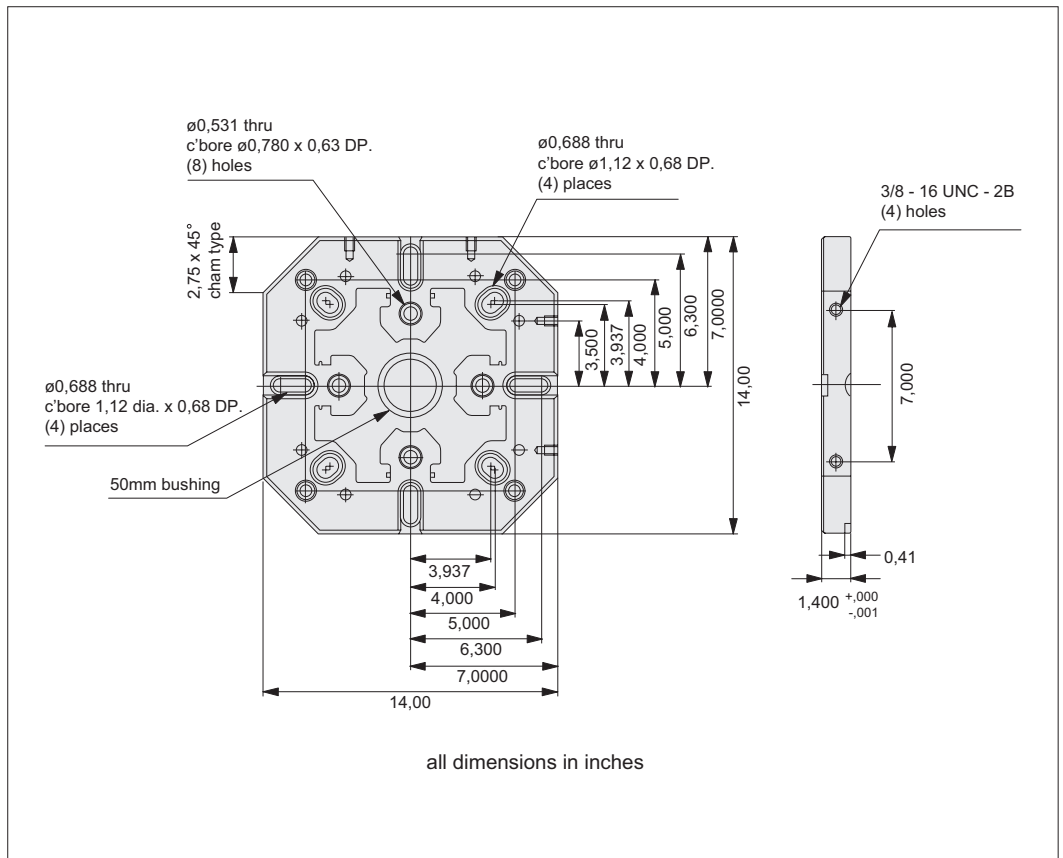
This maintenance procedure should be done periodically.

The frequency of this procedure depends on how much you use your vice.



Universal Baseplate for 6" ReLock 8-Station Vice

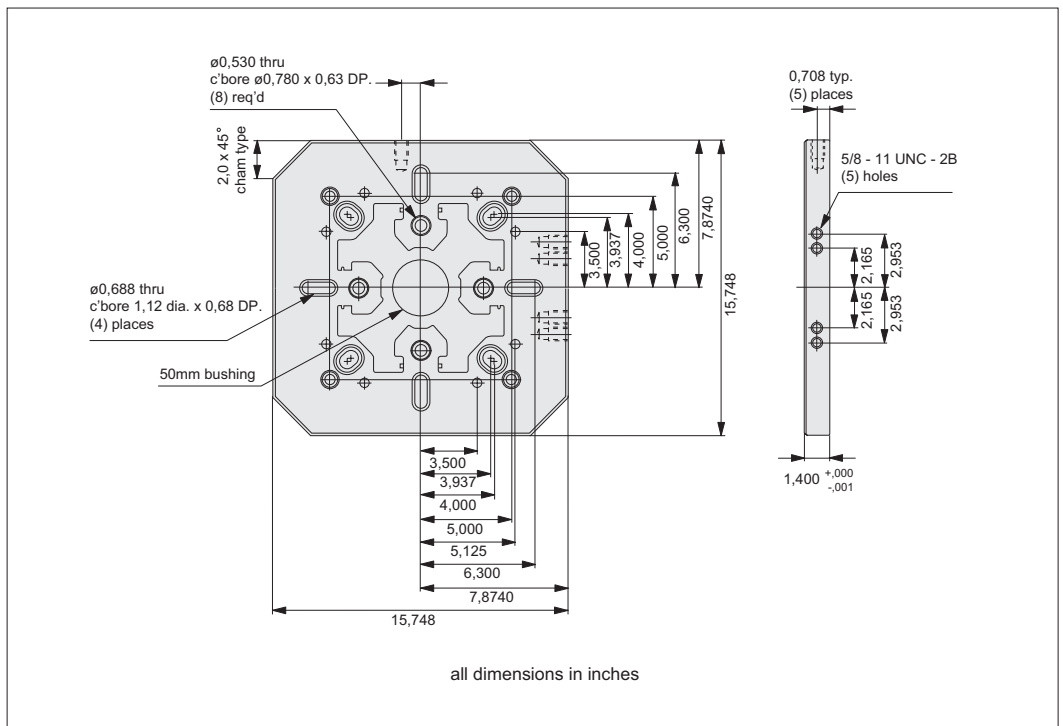
Details of baseplate included with vice no. **19762.W0060**.



VICE CLAMPING

400mm Baseplate for 6" ReLock 8-Station Vice

Details of baseplate included with vice no. **19762.W0061**.



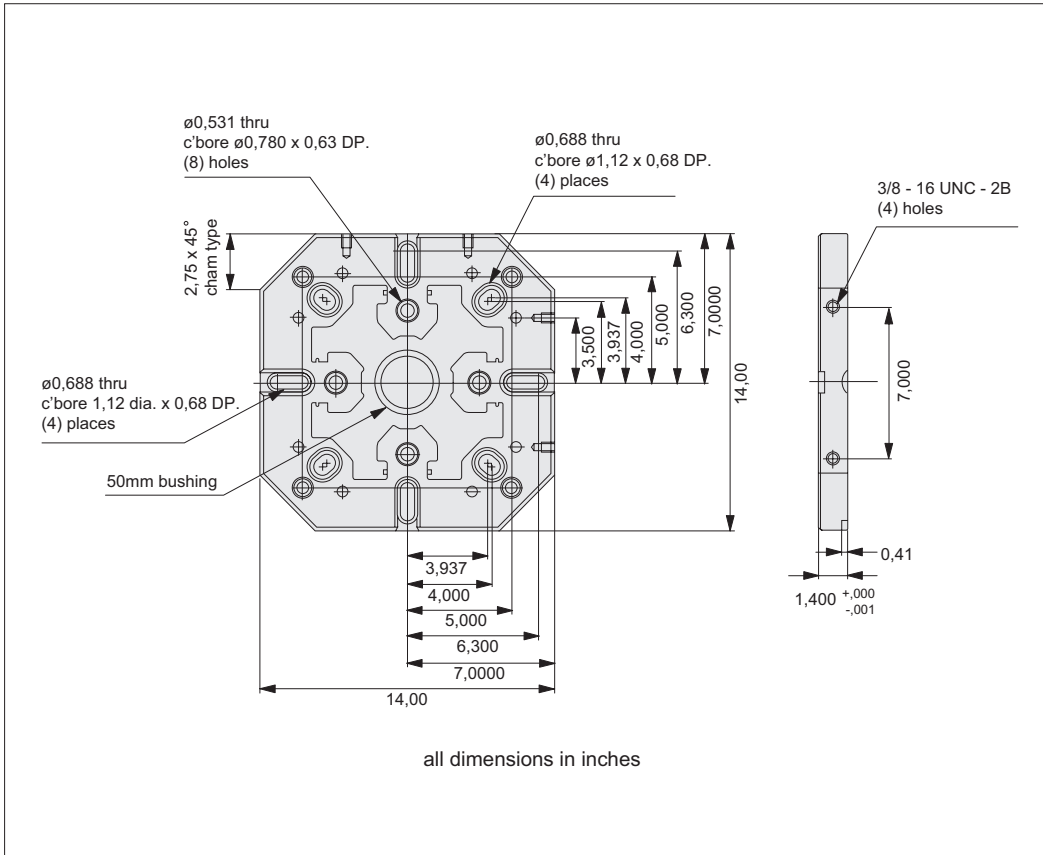


8-Station Vice Baseplate Mounting Information



Universal Baseplate for 6" ReLock 8-Station Vice

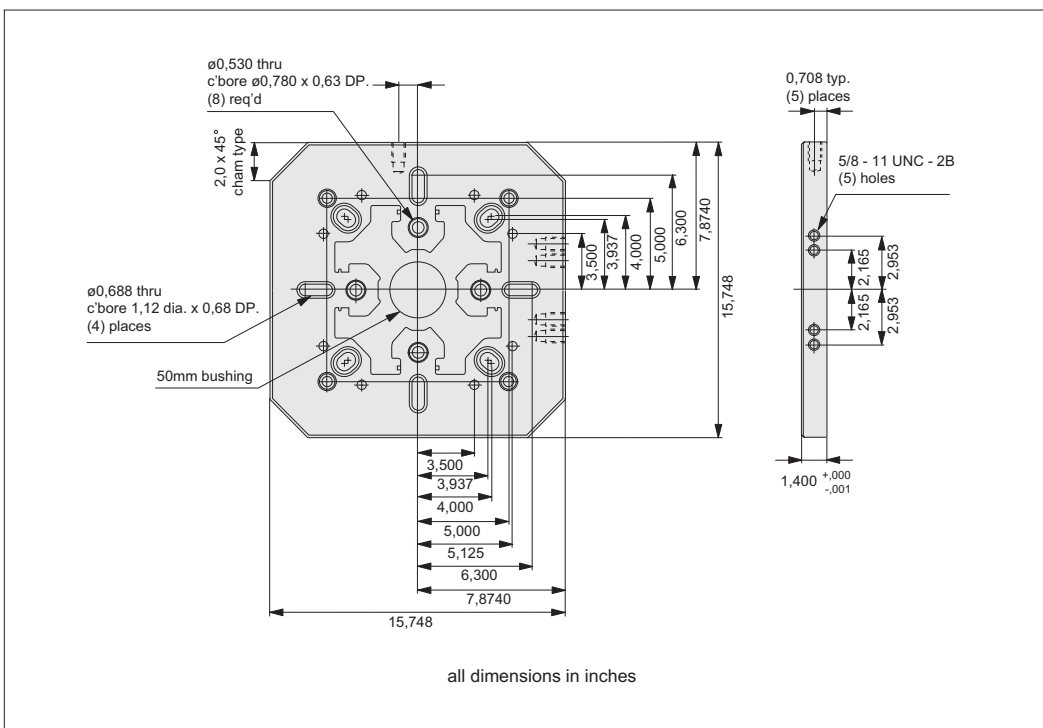
Details of baseplate included with vice no. **19762.W0060**.



VICE CLAMPING

400mm Baseplate for 6" ReLock 8-Station Vice

Details of baseplate included with vice no. **19762.W0061**.

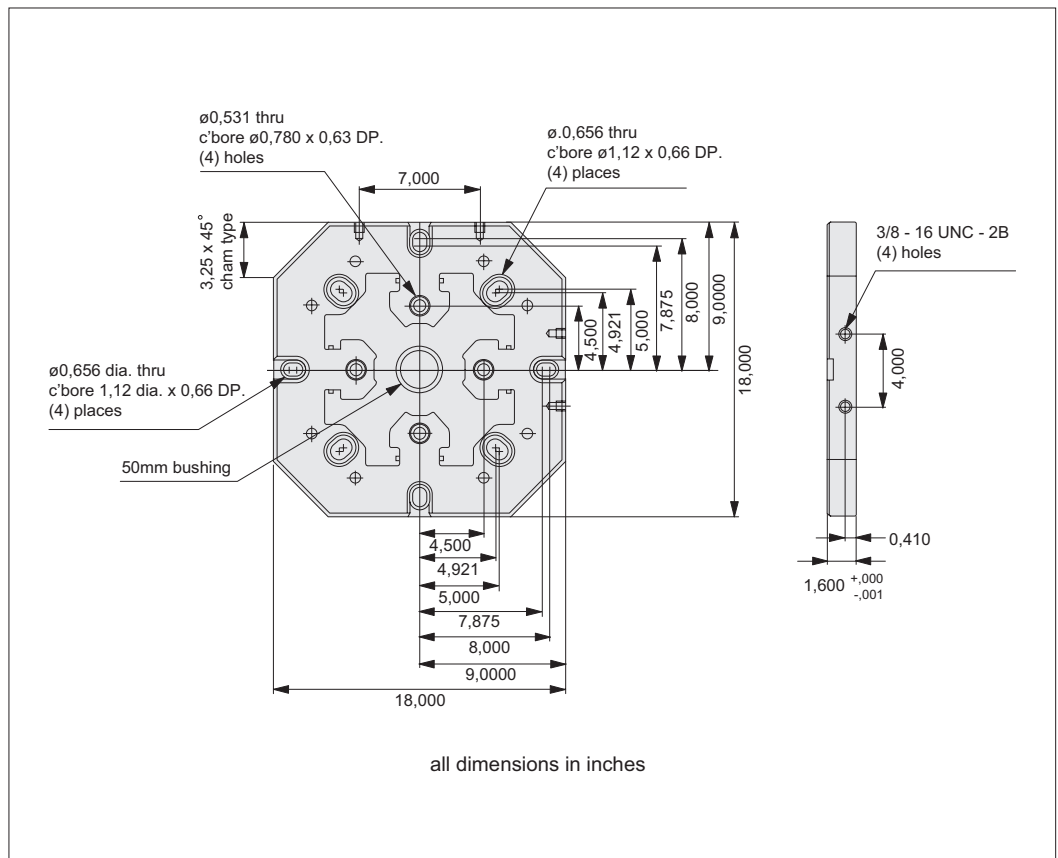


ov-W19762.W0060-61-A-T-8-station-mounting-information-6-inch-rmh - Updated - 26-10-2022



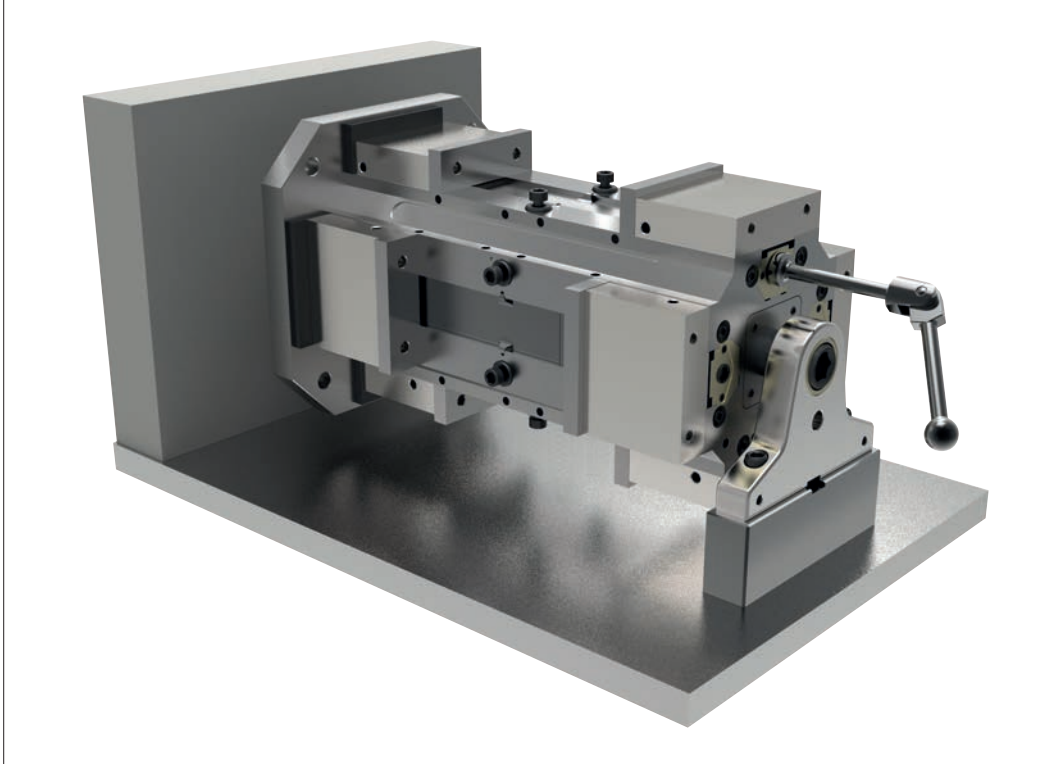
Universal Baseplate for 8" ReLock 8-Station Vice

Details of baseplate included with vice no. **19762.W0080**

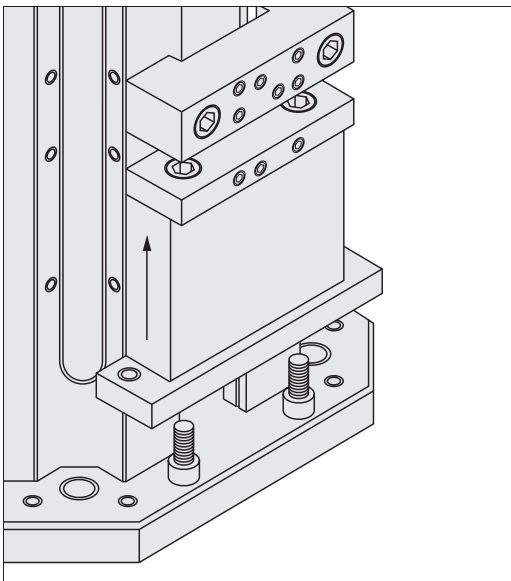




The ReLock 8-Station's compact and lightweight unibody design is perfect for horizontal machining centres. The unibody is manufactured from 80,000 psi ductile cast iron and the guide parts are flame hardened and precision ground to accuracies of $\pm 0,0005''$. It's also ideal for use with rotary indexers on vertical machining centre applications.

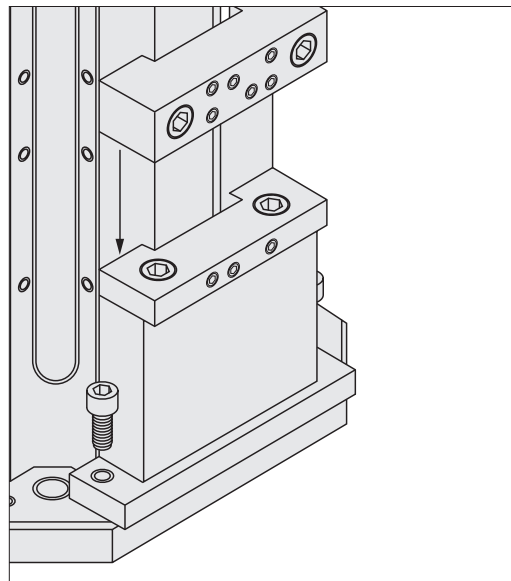


Single Station Conversion Plate



Step 1

Crank bottom jaw toward centre of vice. Mount single station conversion plate **19769** to the back carrier jaw as shown.



Step 2

Crank bottom jaw down until the single station conversion plate touches baseplate. Mount the single station conversion plate to the baseplate.

Easy mounting instructions for the Single Station Conversion Plate **19769** on a ReLock 8-Station vice.

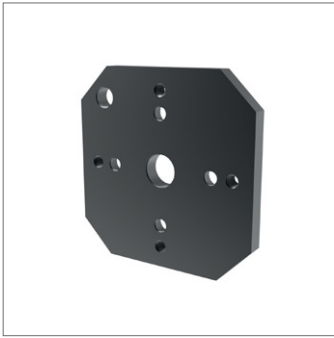


Adapter Plate - ReLock 8

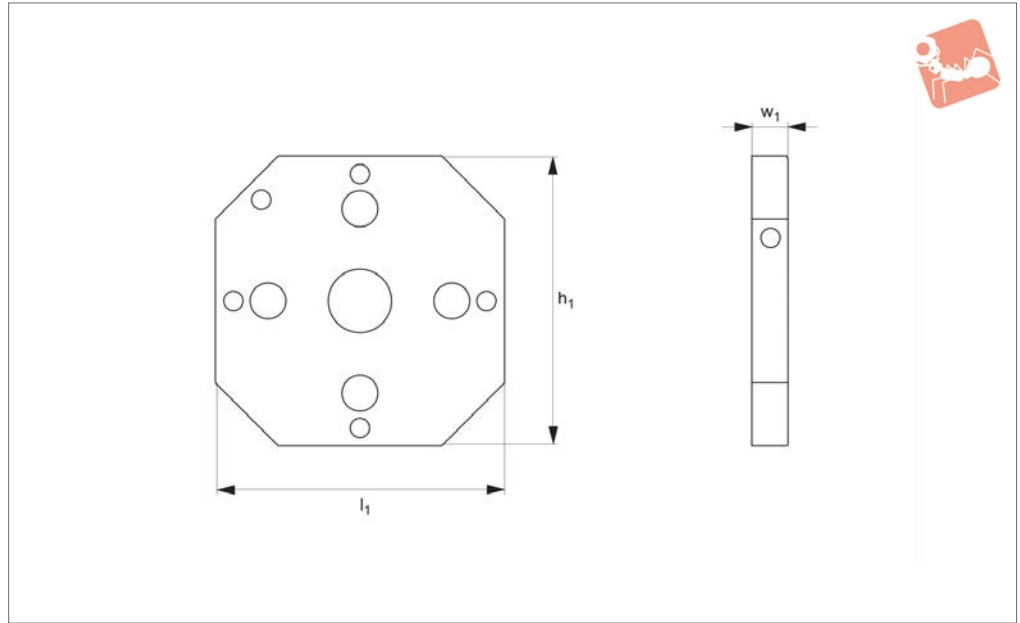
8 station vice pallet or indexer mounting



VICE CLAMPING



19770



Material

Body: 80000 PSI ductile cast iron.
Sideways flame hardened to 40 HRC max.

column vice to pallet or indexer.

Important Notes

All dimensions are in inches.

Technical Notes

Adapter plate simplifies attachment of 8-

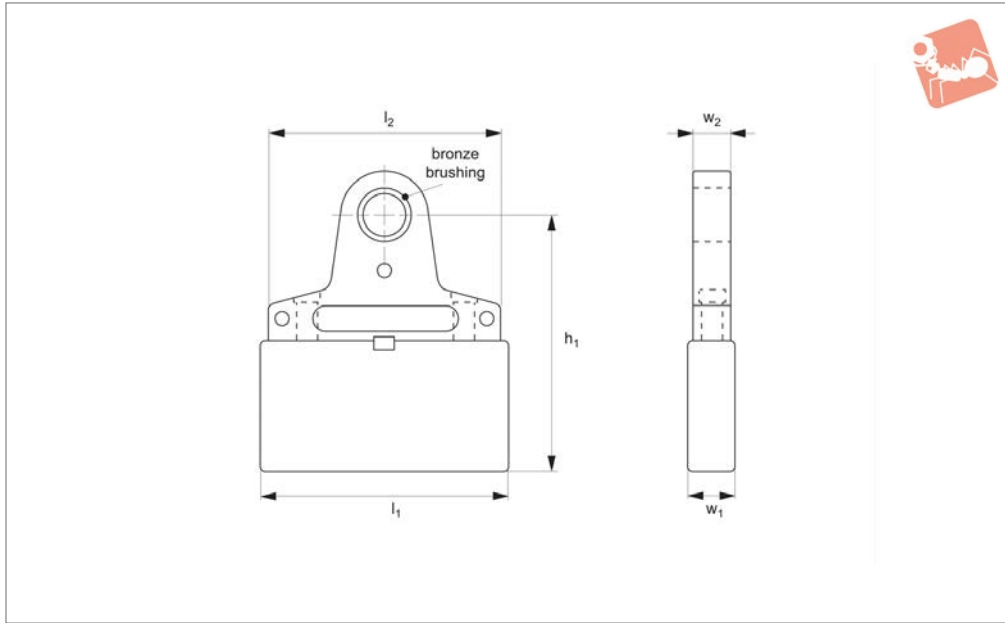
Order No.	Vice size	l_1	h_1	w_1
19770.W0004	4"	9	9	0.75
19770.W0006	6"	12	12	1.00



Support Bracket - ReLock 8

for 8 station vice

Vice Clamping



19771

VICE CLAMPING

Material

Body: 80000 PSI ductile cast iron.
Sideways flame hardened to 40 HRC max.

required height.

Important Notes

All dimensions are in inches.

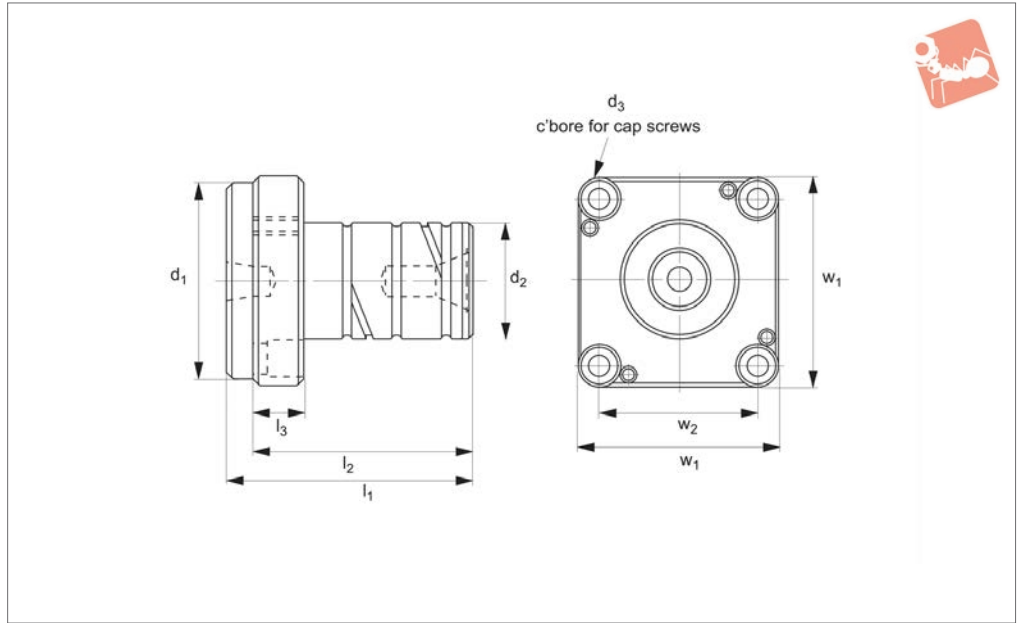
Technical Notes

Support plate, modify base to your

Order No.	l_1	h_1	l_2	w_1	w_2
19771.W0001	10	12	9.5	2	1.5



19772



VICE CLAMPING

Material

Body: 80000 PSI ductile cast iron.
Sideways flame hardened to 40 HRc max.

19771 and adapter plate 19770 for lasting precision to 0,001" total indicator reading (T.I.R.).

Technical Notes

Works in conjunction with support bracket

Important Notes

All dimensions are in inches.

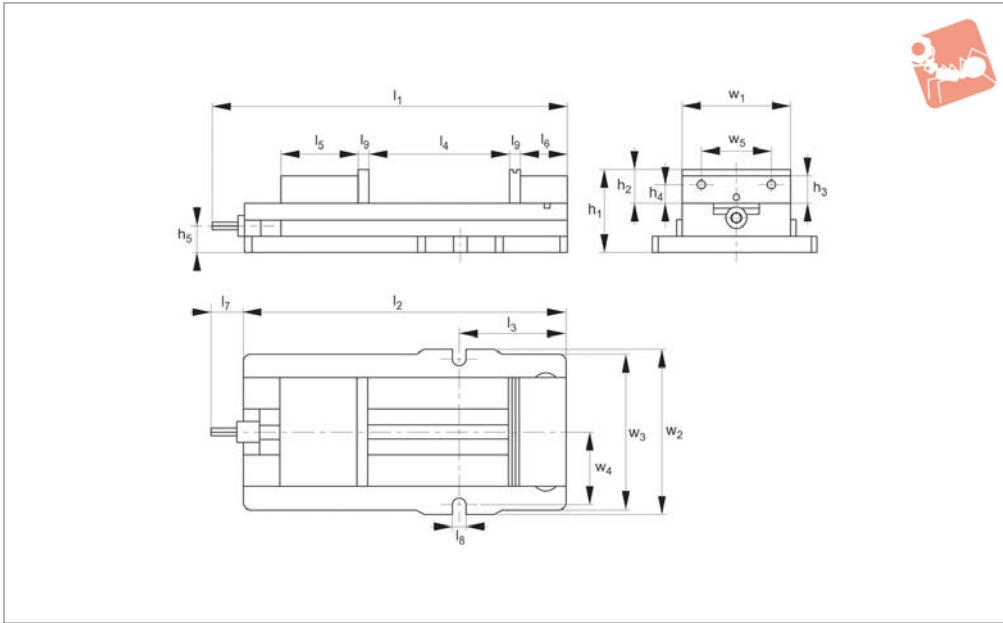
Order No.	For vice size	l_1	d_1 +0.0000 -0.0002	d_2	d_3	l_2	l_3	w_1 +0.000 -0.005	w_2
19772.W0004	4 "	3.000	2.750	19.672	5/16-18	2.750	0.469	2.875	2.207
19772.W0006	6 "	3.125	3.375	19.672	3/8-16	2.875	0.593	3.500	2.726
19772.W0008	8 "	3.250	5.125	19.672	1/2-13	3.000	0.718	5.250	4.187



6" Single Station Parlec Vice

machinable jaws

Vice Clamping



19750

VICE CLAMPING

Material

Ductile iron.

Technical Notes

Up to 8200 lbs of clamping force.
 Base height matched to size 2,875" (73,025mm) ± 0,0005".
 Repeatability within 0,001".

Hardened vice base and jaw plates.

Outside rail edges of the body are machined.

Sealed bearing system reduces clamping pressure and increases bearing life.
 Stationary jaw has machined keyway for alignment of the vice and includes

alignment rail for quick setups.

Footprint and distance from keyway to stationary jaw same as major competitor.

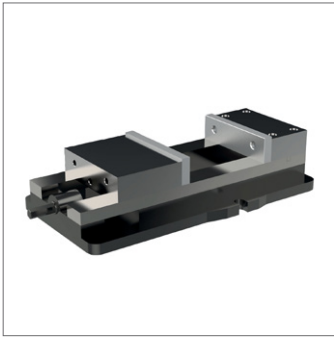
Tips

All dimensions are in inches.

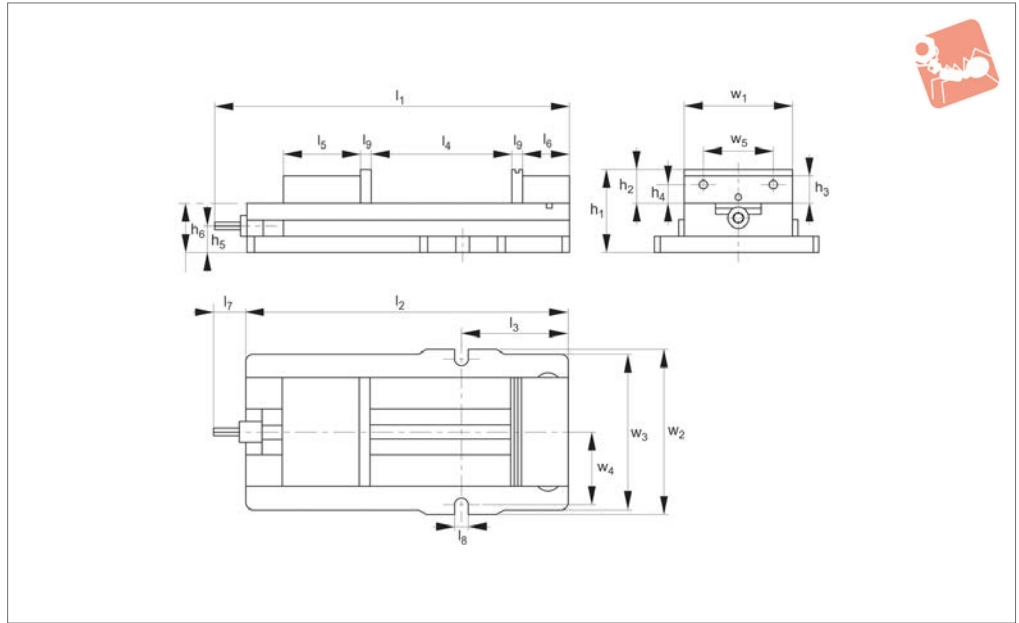
Order No.	Type	Style	Clamping pressure lb max.	h ₁	l ₁	w ₁	h ₂	h ₃	h ₄	h ₅	Weight lb	
19750.W0006	Single Station	Machinable Jaws	8200	4.625	19.376	6	1.5	1.5	0.96	1.53	81	
Order No.	l ₂	l ₃	l ₄	l ₅	l ₆	l ₇	l ₈	l ₉	w ₂	w ₃	w ₄	w ₅
19750.W0006	17.206	5.7	9	4.85	2.04	2.17	0.73	0.7	8.77	8.29	3.875	3.87



VICE CLAMPING



19751



Material

Ductile iron. Powder coated paint resists flaking and peeling. 80000 psi ductile iron body with increased nickel content for improved corrosion resistance.

Technical Notes

Hardened vice base and jaw plates. Sealed

and lubricated needle roller thrust bearing for maximum life and minimum torque. Up to 12000lbs. (53379N) of clamping force. Repeatability within 0,001" (0,025mm). Outside rails of body are machined within 0,0005" (0,013mm) square to jaw. Bed height matched to size

3.310" ±0,0005" (84,07mm ±0,013mm). Footprint and distance from the keyway to stationary jaw meets industry standard.

Important Notes

All dimensions are in inches.

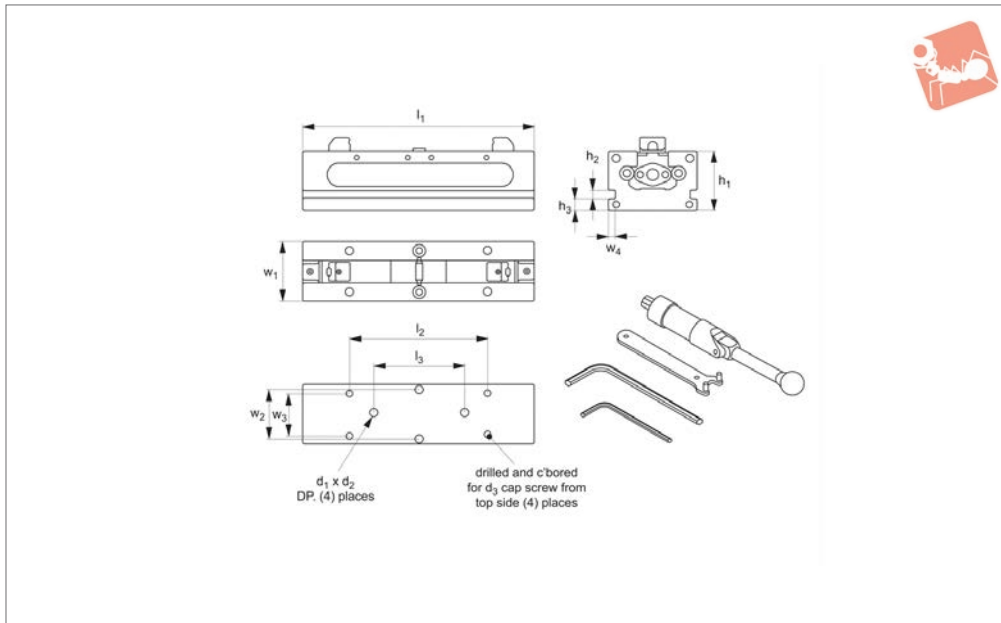
Order No.	Type	Style	Clamping pressure lb max.	h_1	l_1	w_1	h_2	h_3	h_4	h_5	Weight lb		
19751.W0008	Single Station	Machinable Jaws	12000	5.51	24.47	8	2.2	1.565	1.22	1.655	175		
Order No.	h_6	l_2	l_3	l_4 max.	l_5	l_6	l_7	l_8	l_9	w_2	w_3	w_4	w_5
19751.W0008	3.31	21.61	8.34	11	5.75	3.681	2.66	0.875	1.075	11.5	11	4.94	4.75



Double Station Vice

ReLock 2

Vice Clamping



19752

VICE CLAMPING

Material

Body: 80000 PSI ductile cast iron.
Sideways flame hardened to 40 HRC max.

Technical Notes

Vice jaws not included, order separately - see part no. 19790.

Jaw capacity dependent upon selection of either machinable or hard jaws, see technical pages.

Replacement parts available.

Tips

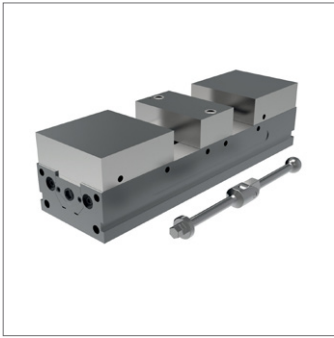
Supplied with actuation handle, hex key

and wrench.

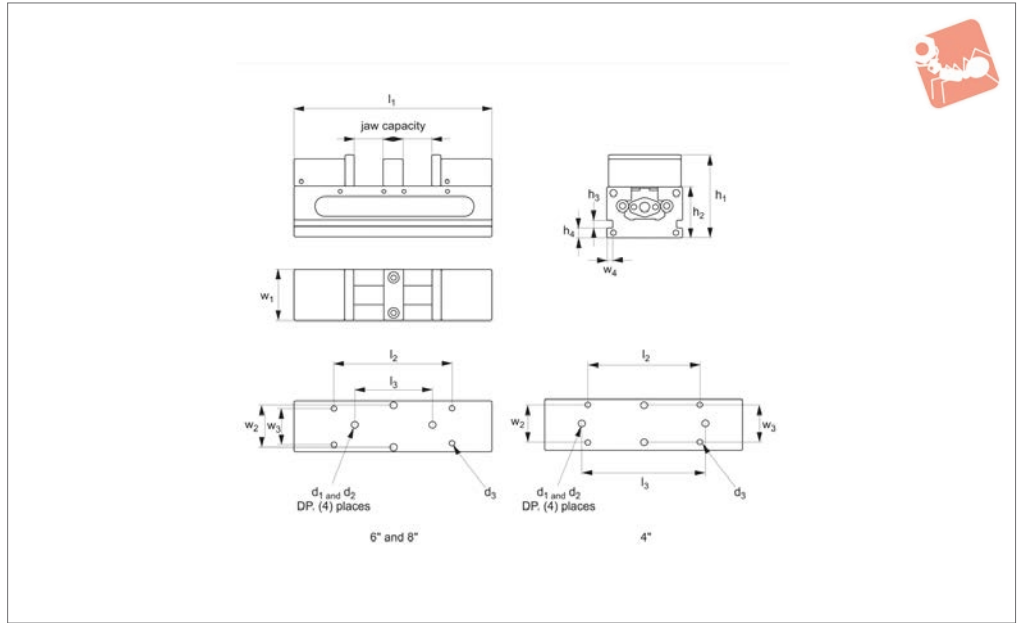
Important Notes

All dimensions are in inches.

Order No.	Vice size	Clamping pressure lb max.	h_1 ±0.0005	l_1	w_1 +0.000 -0.002	h_2	h_3	d_1	d_2	d_3	l_2	l_3 ±0.001	w_2 ±0.001	w_3	w_4	Weight lb
19752.W0004	4"	6000	2,50	16,0	4	0,375	0,50	0,501	0,56	5/16-18	9	10	3	3	0,190	33
19752.W0006	6"	12000	3,25	20,5	6	0,562	0,75	0,501	0,63	3/8-16	12	10	5	4	0,250	68
19752.W0008	8"	16000	4,00	28,5	8	0,625	0,75	0,751	0,90	1/2-13	16	14	6	6	0,312	110



19754



VICE CLAMPING

Material

Body: 80000 PSI ductile cast iron.
Sideways flame hardened to 40 HRc max.
Machinable jaws: aluminium.

Tips

Supplied with actuation handle, hex key and wrench.

Technical Notes

Replacement parts available.

Important Notes

All dimensions are in inches.

Order No.	Vice size	Set contents	Clamp pressure lb max.	Jaw capacity	h_1	l_1	w_1 +0.000 -0.002	h_2 ±0.005	Weight lb
19754.W0004	4"	Vice - 1 x 19752.W0004, Machinable jaws - 1 x 19790.W0401	6000	4,125 to 15,000	4"	16.0	4	2.50	40
19754.W0006	6"	Vice - 1 x 19752.W0006, Machinable jaws - 1 x 19790.W0601	12000	5,125 to 19,500	6"	20.5	6	3.25	86
19754.W0008	8"	Vice - 1 x 19752.W0008, Machinable jaws - 1 x 19790.W0801	16000	7,625 to 27,500	8"	28.5	8	4.00	149

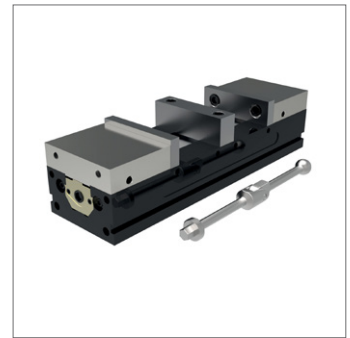
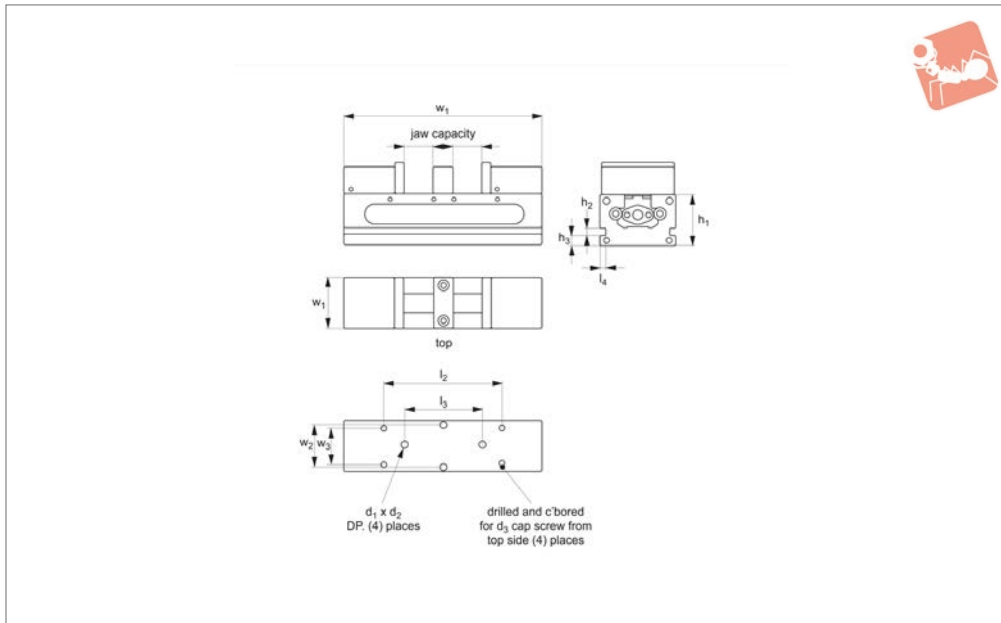
Order No.	h_3	h_4	d_1	d_2 ±0.0005	d_3	l_2	l_3 ±0.001	w_2	w_3	w_4
19754.W0004	0.375	0.50	0.56	0.501	0.3125	9	10	3	3	0.190
19754.W0006	0.562	0.75	0.63	0.501	0.3125	12	10	5	4	0.250
19754.W0008	0.625	0.75	0.90	0.751	0.3125	16	14	6	6	0.312



Double Station Vice

ReLock 2 - with hard jaws

Vice Clamping



19756

VICE CLAMPING

Material

Body: 80000 PSI ductile cast iron.
 Sideways flame hardened to 40 HRC max.
 Carrier jaws: aluminium.
 Hard jaws: steel.

Technical Notes

Replacement parts available.

Tips

Supplied with actuation handle, hex key

and wrench.

Important Notes

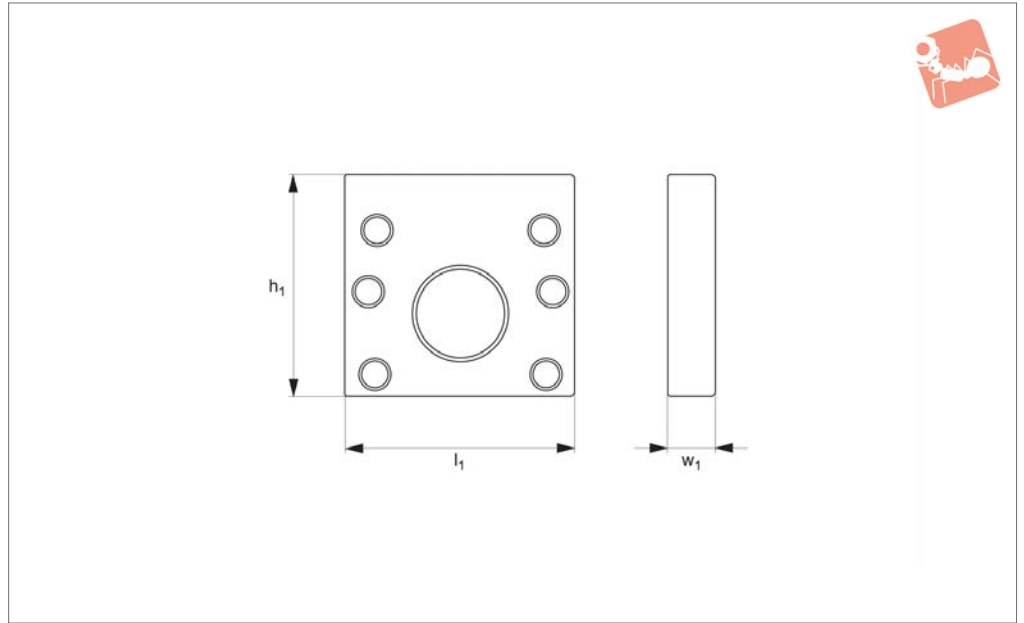
All dimensions are in inches.

Order No.	Vice size	Set contents	Clamping pressure lb max.	Jaw capacity	h_1 ± 0.0005	l_1	w_1 $+0.000 -0.002$
19756.W0004	4"	Vice - 1 x 19752.W0004, Carrier jaws - 1 x 19796.W0403, Hard jaws - 1 x 19892.W0401	6000	3,00 to 16,00	2.50	16.0	4
19756.W0006	6"	Vice - 1 x 19752.W0006, Carrier jaws - 1 x 19796.W0603, Hard jaws - 1 x 19892.W0601	12000	4,00 to 20,50	3.25	20.5	6
19756.W0008	8"	Vice - 1 x 19752.W0008, Carrier jaws - 1 x 19796.W0803, Hard jaws - 1 x 19892.W0801	16000	6,00 to 28,50	4.00	28.5	8

Order No.	h_2	h_3	d_1	d_2	d_3	l_2	l_3 ± 0.001	l_4	w_2 ± 0.03	w_3
19756.W0004	0.375	0.50	0.501	0.56	5/16-18	9	10	0.190	3	3
19756.W0006	0.562	0.75	0.501	0.63	3/8-16	12	10	0.250	5	4
19756.W0008	0.652	0.75	0.751	0.90	1/2-13	16	14	0.312	6	6



19759



Technical Notes

For use on 8-station vice. Converts a double station vice to a single station in conjunction with SnapLock carrier jaws.

Important Notes

Not compatible with 19768 compact 8-vice column.
All dimensions are in inches.

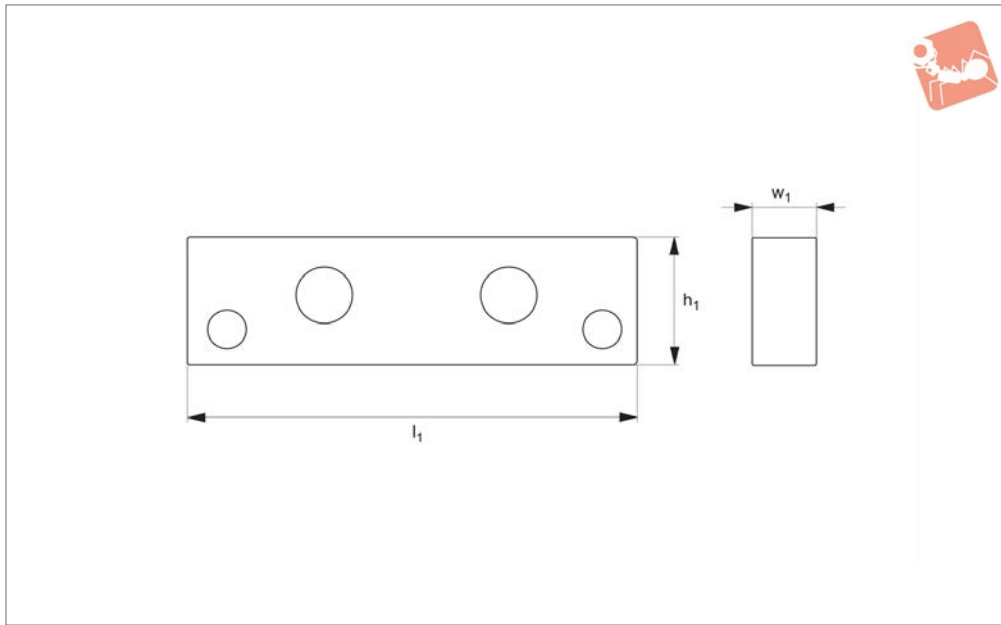
Order No.	Vice size	h_1	l_1	w_1
19759.W0004	4"	4.163	4	0.72
19759.W0006	6"	5.538	6	0.72
19759.W0008	8"	7.093	8	0.97



Conversion Plate - ReLock 8

double to single station vice

Vice Clamping



19769

VICE CLAMPING

Material

Body: 80000 PSI ductile cast iron.
Sideways flame hardened to 40 HRC max.

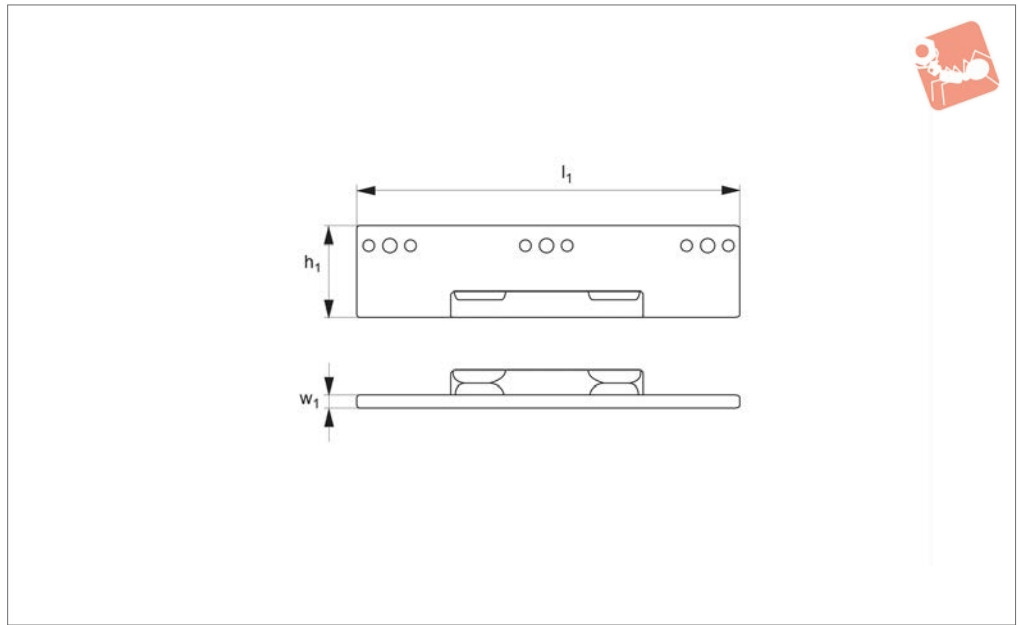
Important Notes

All dimensions are in inches.

Order No.	h_1	l_1	w_1
19769.W0004	1.35	5.50	0.72
19769.W0006	2.00	8.00	0.72
19769.W0008	2.50	10.25	0.97



19812



Material

Body: 80000 psi ductile cast iron.

Technical Notes

Use in conjunction with AccuSnap master

jaws 19810.

Parallels snap into position quickly and easily. Can be used with AccuSnap modular workstops (except sizes 19812.W0401,

W0402, W0601, W0602 and W0801).

Important Notes

All dimensions are in inches.

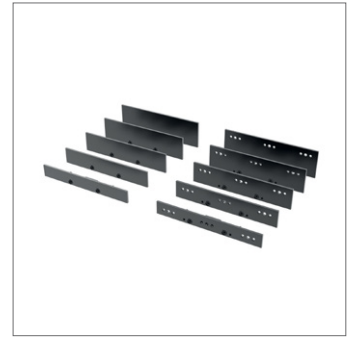
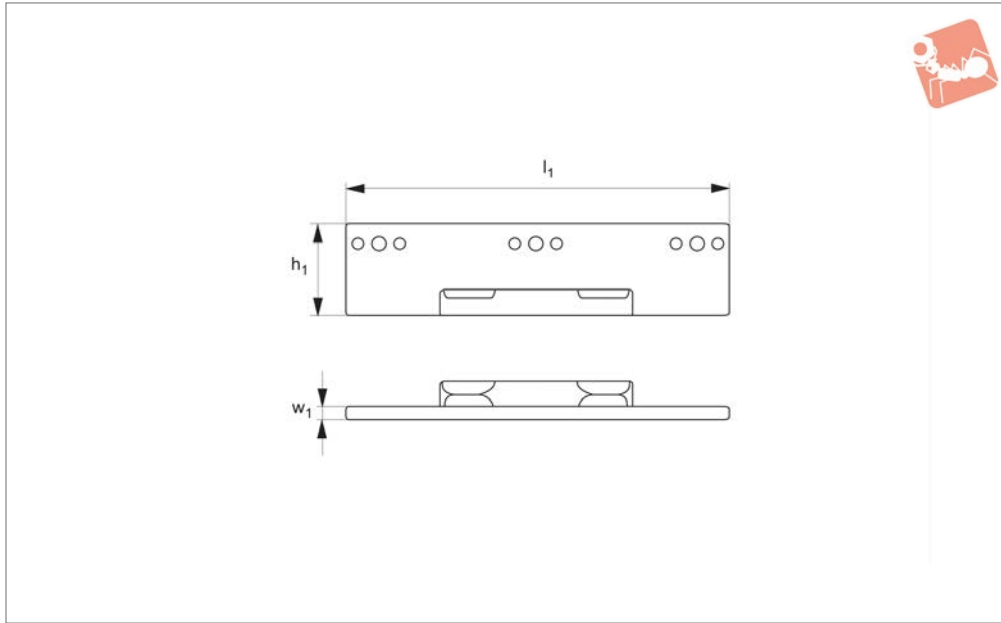
Order No.	Vice size	l_1	h_1 ± 0.0005	w_1
19812.W0401	4"	3.98	0.500	0.118
19812.W0402	4"	3.98	0.625	0.118
19812.W0403	4"	3.98	0.750	0.118
19812.W0404	4"	3.98	0.875	0.118
19812.W0405	4"	3.98	1.000	0.118
19812.W0406	4"	3.98	1.125	0.118
19812.W0407	4"	3.98	1.250	0.118
19812.W0408	4"	3.98	1.312	0.118
19812.W0601	6"	5.98	0.750	0.118
19812.W0602	6"	5.98	1.000	0.118
19812.W0603	6"	5.98	1.125	0.118
19812.W0604	6"	5.98	1.250	0.118
19812.W0605	6"	5.98	1.375	0.118
19812.W0606	6"	5.98	1.500	0.118
19812.W0607	6"	5.98	1.625	0.118
19812.W0608	6"	5.98	1.750	0.118
19812.W0609	6"	5.98	1.812	0.118
19812.W0801	8"	7.98	1.000	0.118
19812.W0802	8"	7.98	1.250	0.118
19812.W0803	8"	7.98	1.375	0.118
19812.W0804	8"	7.98	1.500	0.118
19812.W0805	8"	7.98	1.625	0.118
19812.W0806	8"	7.98	1.750	0.118
19812.W0807	8"	7.98	1.875	0.118
19812.W0808	8"	7.98	2.000	0.118
19812.W0809	8"	7.98	2.125	0.118
19812.W0810	8"	7.98	2.250	0.118



Vice Parallel Sets - AccuSnap

for use with AccuSnap master jaws 19810

Vice Clamping



19814

VICE CLAMPING

Material

Body: 80000 psi ductile cast iron.

Technical Notes

Use in conjunction with AccuSnap master

jaws. Parallels snap into position quickly and easily.

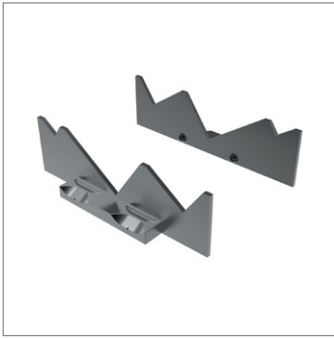
Can be used with AccuSnap modular work-stops.

Holder racks available see part no. 19838.

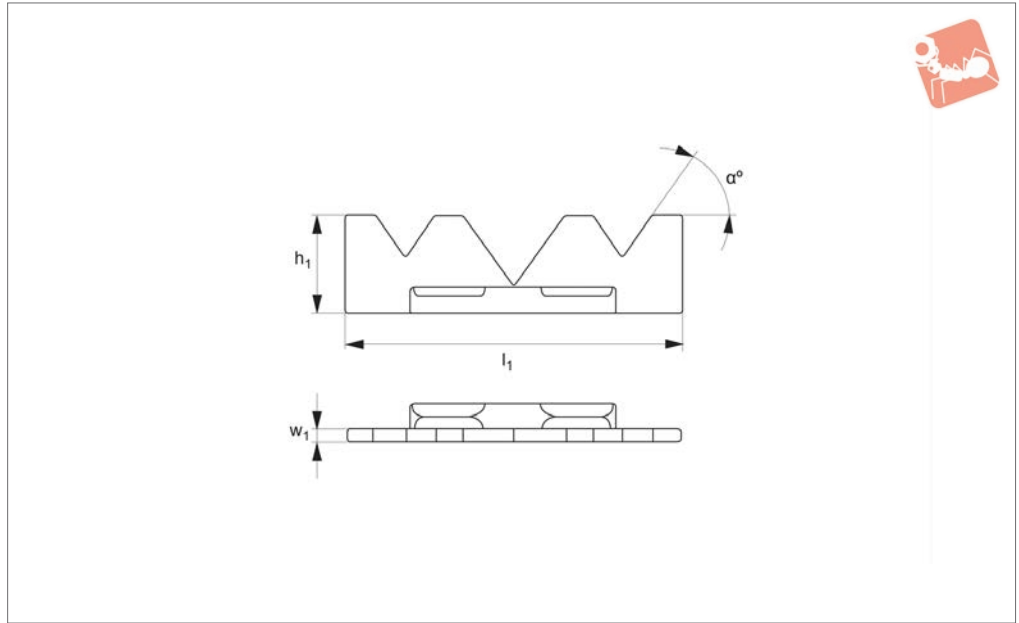
Important Notes

All dimensions are in inches.

Order No.	Vice size	Type	Set contents: 1 pair each x dim. h_1								l_1	w_1		
			± 0.0005											
19814.W0040	4"	Basic	0,500	0,750	1,000	1,250	1,312				3.98	0.118		
19814.W0060	6"	Basic	0,750	1,000	1,250	1,500	1,750				5.98	0.118		
19814.W0080	8"	Basic	1,000	1,250	1,500	1,750	2,000	2,250			7.98	0.118		
19814.W0140	4"	Advanced	0,500	0,625	0,750	0,875	1,000	1,125	1,250	1,312	3.98	0.118		
19814.W0160	6"	Advanced	0,750	1,000	1,125	1,250	1,375	1,500	1,625	1,750	1,812	5.98	0.118	
19814.W0180	8"	Advanced	1,000	1,250	1,375	1,500	1,625	1,750	1,875	2,000	2,125	2,250	7.98	0.118



19816



Material

Body: 80000 psi ductile cast iron.

jaws.

Technical Notes

Use in conjunction with AccuSnap master

Important Notes

All dimensions are in inches.

Order No.	Vice size	Type	l_1	h_1	w_1	α
19816.W0040	4"	Individual	4	1.240	0.118	20
19816.W0041	4"	Individual	4	1.240	0.118	25
19816.W0042	4"	Individual	4	1.240	0.118	30
19816.W0043	4"	Individual	4	1.240	0.118	35
19816.W0044	4"	Individual	4	1.240	0.118	40
19816.W0045	4"	Individual	4	1.240	0.118	45
19816.W0060	6"	Individual	6	1.174	0.118	20
19816.W0061	6"	Individual	6	1.174	0.118	25
19816.W0062	6"	Individual	6	1.174	0.118	30
19816.W0063	6"	Individual	6	1.174	0.118	35
19816.W0064	6"	Individual	6	1.174	0.118	40
19816.W0065	6"	Individual	6	1.174	0.118	45
19816.W0080	8"	Individual	8	2.230	0.118	20
19816.W0081	8"	Individual	8	2.230	0.118	25
19816.W0082	8"	Individual	8	2.230	0.118	30
19816.W0083	8"	Individual	8	2.230	0.118	35
19816.W0084	8"	Individual	8	2.230	0.118	40
19816.W0085	8"	Individual	8	2.230	0.118	45
19816.W0140	4"	Matched Set	4	1.240	0.118	20
19816.W0141	4"	Matched Set	4	1.240	0.118	25
19816.W0142	4"	Matched Set	4	1.240	0.118	30
19816.W0143	4"	Matched Set	4	1.240	0.118	35
19816.W0144	4"	Matched Set	4	1.240	0.118	40
19816.W0145	4"	Matched Set	4	1.240	0.118	45
19816.W0160	6"	Matched Set	6	1.174	0.118	20
19816.W0161	6"	Matched Set	6	1.174	0.118	25
19816.W0162	6"	Matched Set	6	1.174	0.118	30
19816.W0163	6"	Matched Set	6	1.174	0.118	35
19816.W0164	6"	Matched Set	6	1.174	0.118	40
19816.W0165	6"	Matched Set	6	1.174	0.118	45
19816.W0180	8"	Matched Set	8	2.230	0.118	20
19816.W0181	8"	Matched Set	8	2.230	0.118	25
19816.W0182	8"	Matched Set	8	2.230	0.118	30
19816.W0183	8"	Matched Set	8	2.230	0.118	35



Vice Mill Angles - AccuSnap

for use with AccuSnap master jaws 19810

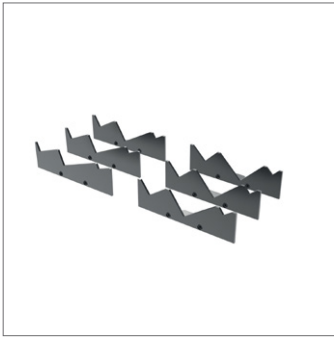


Vice Clamping

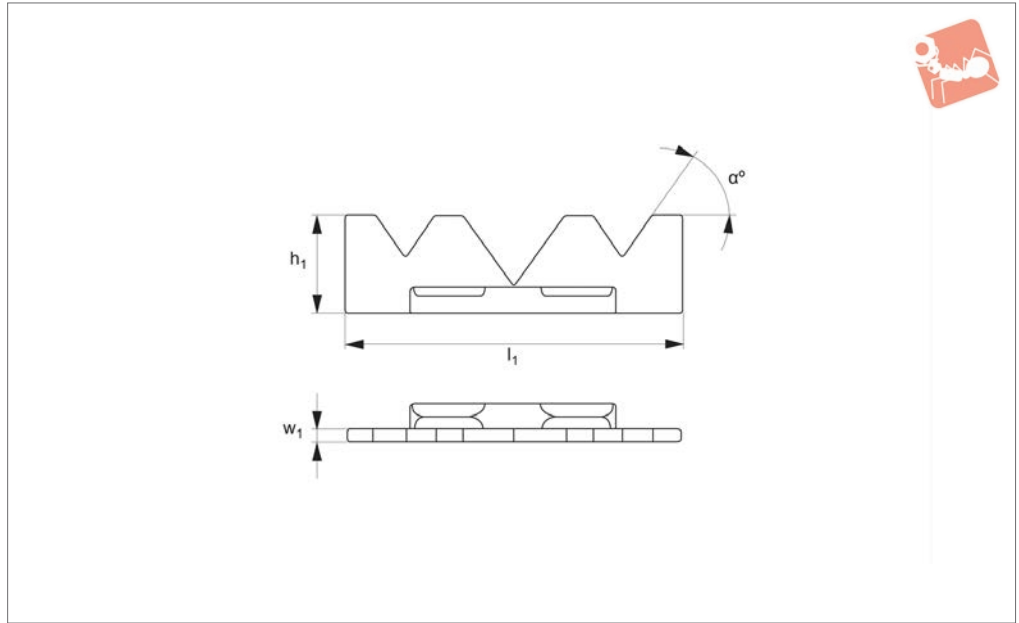
Order No.	Vice size	Type	l_1	h_1	w_1	α
19816.W0184	8"	Matched Set	8	2.230	0.118	40
19816.W0185	8"	Matched Set	8	2.230	0.118	45



VICE CLAMPING



19818



Material

Body: 80000 psi ductile cast iron.

Important Notes

All dimensions are in inches.

Technical Notes

For use with our AccuSnap master jaws.

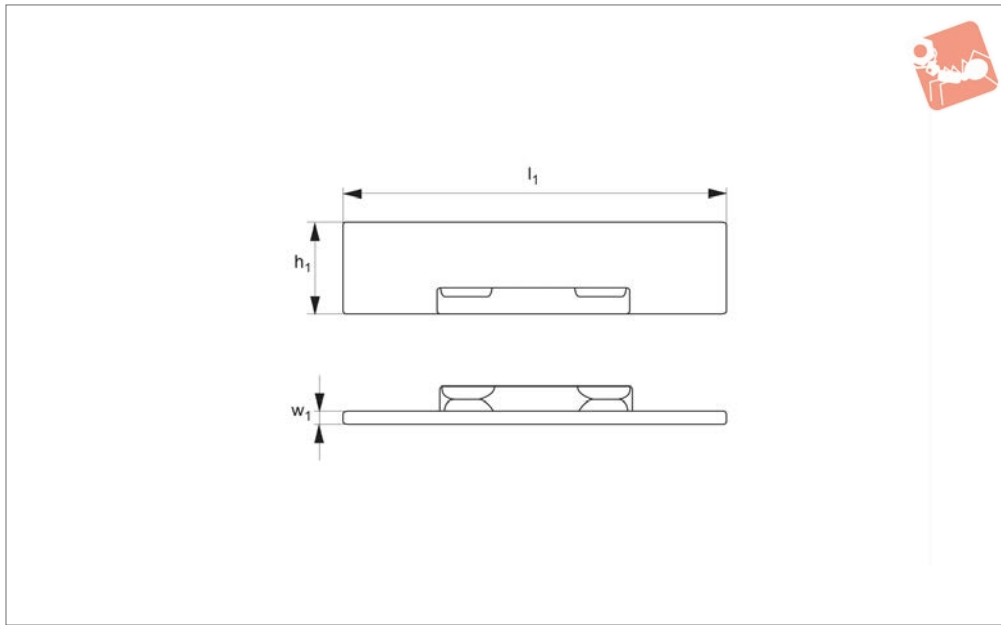
Order No.	For vice size	l_1	h_1	w_1	Set contents 1 each of a°
19818.W0040	4"	4	1.24	0.118	20° 25° 30° 35° 40° 45°
19818.W0060	6"	6	1.74	0.118	20° 25° 30° 35° 40° 45°
19818.W0080	8"	8	2.23	0.118	20° 25° 30° 35° 40° 45°



Machinable Vice Jaws - AccuSnap

for use with AccuSnap master jaws 19810

Vice Clamping



19820

VICE CLAMPING

Material

Aluminium or steel.

Jaws snap in position quickly and easily.

All dimensions are in inches.

Technical Notes

For use with our AccuSnap master jaws.

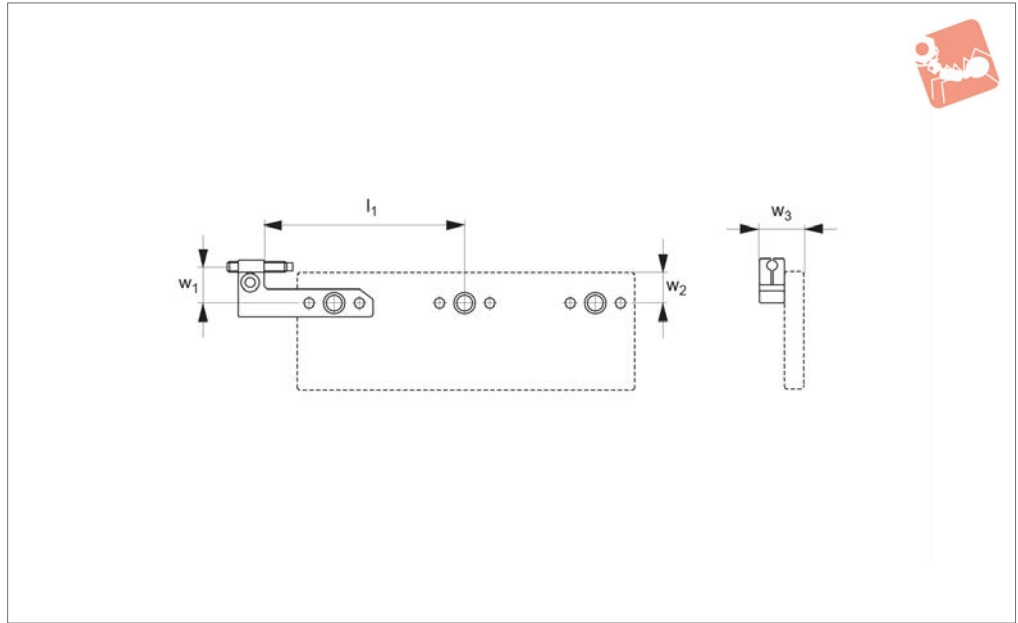
Important Notes

Sold individually. For a pair please order quantity of 2.

Order No.	For vice size	Material	l_1	h_1	w_1
19820.W0040	4"	Aluminium	3.98	1.5	0.690
19820.W0041	4"	Aluminium	3.98	1.5	1.255
19820.W0060	6"	Aluminium	5.98	2.0	0.750
19820.W0061	6"	Aluminium	5.98	2.0	1.500
19820.W0080	8"	Aluminium	7.98	2.5	1.250
19820.W0081	8"	Aluminium	7.98	2.5	2.500
19820.W0140	4"	Steel	3.98	1.5	0.690
19820.W0141	4"	Steel	3.98	1.5	1.255
19820.W0160	6"	Steel	5.98	2.0	0.750
19820.W0161	6"	Steel	5.98	2.0	1.500
19820.W0180	8"	Steel	7.98	2.5	1.250
19820.W0181	8"	Steel	7.98	2.5	2.500



19830



Material

Body: 80000 psi ductile cast iron.

For use with our AccuSnap parallel sets (please order separately).

(not supplied). Secure workstop by tightening screw.

Technical Notes

Ideal for off-line setup. Provides accurate workpiece location and repeatability.

Important Notes

Install using locating dowel pin into one of three stop locations on face of parallel

All dimensions are in inches.

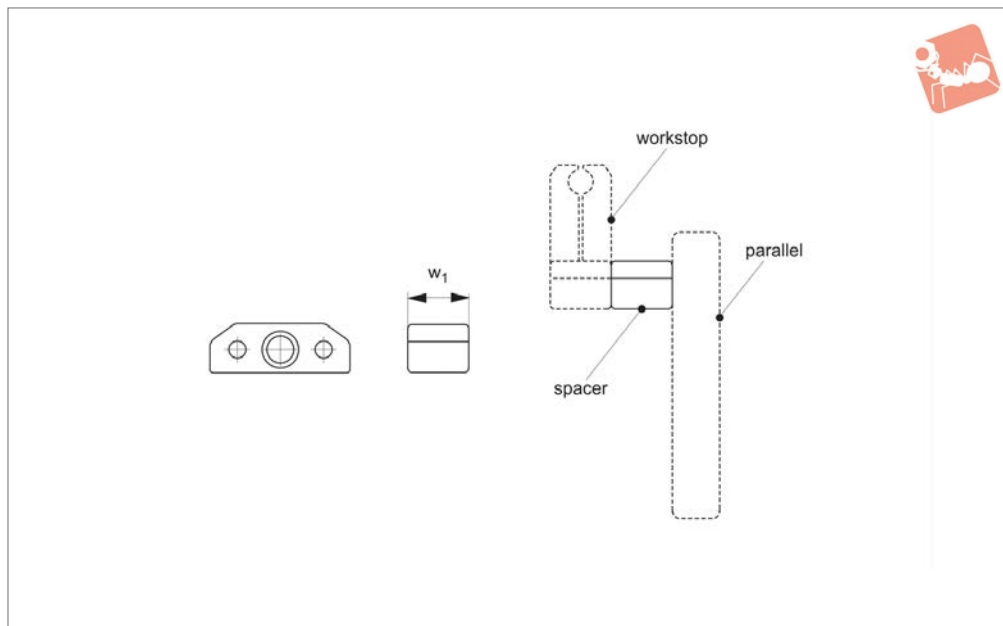
Order No.	For vice size	Type	l_1	w_1	w_2	w_3
19830.W0040	4"	Right Hand	1.75	0.469	0.493	0.28
19830.W0041	4"	Right Hand	2.50	0.469	0.493	0.28
19830.W0042	4"	Right Hand	1.75	0.969	0.493	0.28
19830.W0043	4"	Right Hand	2.50	0.969	0.493	0.28
19830.W0060	6"	Right Hand	2.68	0.657	0.493	0.47
19830.W0061	6"	Right Hand	3.68	0.657	0.493	0.47
19830.W0062	6"	Right Hand	2.68	1.157	0.493	0.47
19830.W0063	6"	Right Hand	3.68	1.157	0.493	0.47
19830.W0080	8"	Right Hand	3.50	0.626	0.618	0.44
19830.W0081	8"	Right Hand	5.00	0.626	0.618	0.44
19830.W0082	8"	Right Hand	3.50	1.126	0.618	0.44
19830.W0083	8"	Right Hand	5.00	1.126	0.618	0.44
19830.W0140	4"	Left Hand	1.75	0.469	0.493	0.28
19830.W0141	4"	Left Hand	2.50	0.469	0.493	0.28
19830.W0142	4"	Left Hand	1.75	0.969	0.493	0.28
19830.W0143	4"	Left Hand	2.50	0.969	0.493	0.28
19830.W0160	6"	Left Hand	2.68	0.657	0.493	0.47
19830.W0161	6"	Left Hand	3.68	0.657	0.493	0.47
19830.W0162	6"	Left Hand	2.68	1.157	0.493	0.47
19830.W0163	6"	Left Hand	3.68	1.157	0.493	0.47
19830.W0180	8"	Left Hand	3.50	0.626	0.618	0.44
19830.W0181	8"	Left Hand	5.00	0.626	0.618	0.44
19830.W0182	8"	Left Hand	3.50	1.126	0.618	0.44
19830.W0183	8"	Left Hand	5.00	1.126	0.618	0.44



Spacers - AccuSnap

for use with AccuSnap workstop 19830

Vice Clamping



19832

VICE CLAMPING

Material

Body: 80000 psi ductile cast iron.

Technical Notes

For use with AccuSnap workstop no. 19830,

spaces enables workstop to be offset from parallel face. For use with our AccuSnap workstop and parallel sets (please order separately).

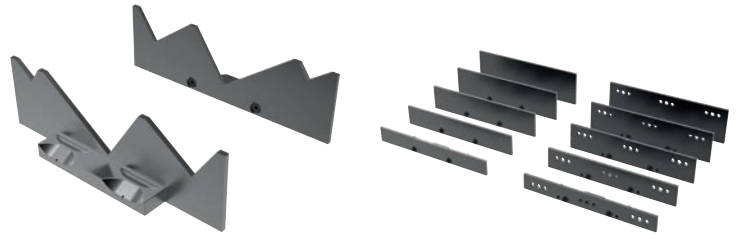
Important Notes

All dimensions are in inches.

Order No.	For vice size	w ₁
19832.W0040	4"	0.375
19832.W0060	6"	0.375
19832.W0080	8"	0.500



- Fast, accurate and versatile.
- Reduces setup time drastically.
- $\pm 0,0002''$ repeatability.
- Adaptable to most vice systems.

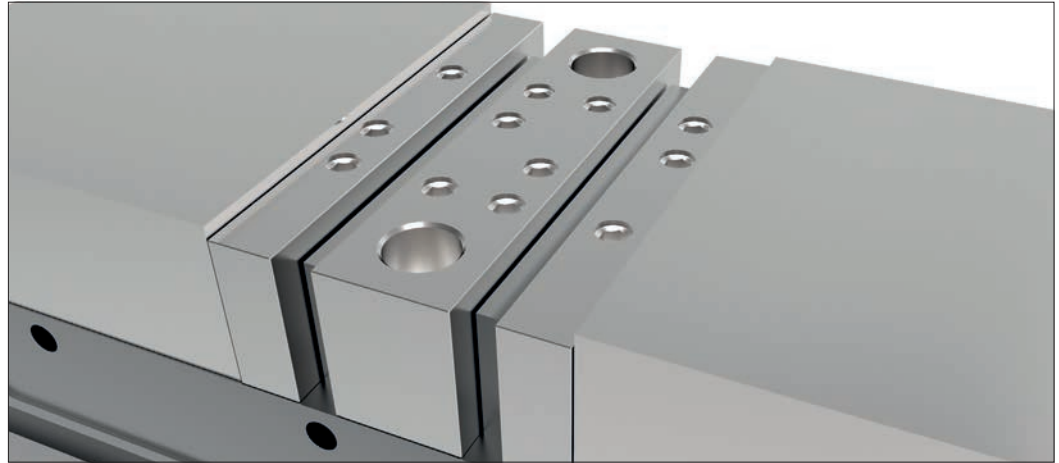


VICE CLAMPING

Step 1:

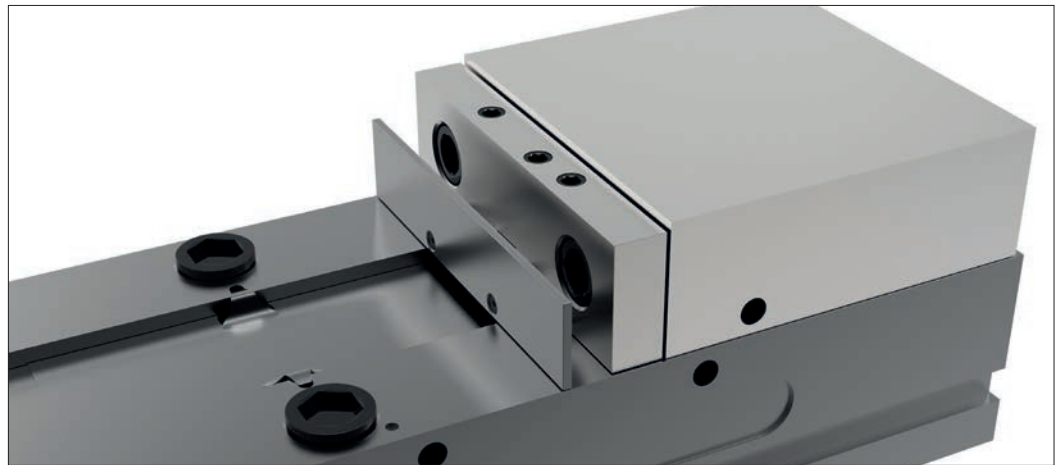
Before mounting AccuSnap master jaws, thoroughly inspect, clean and remove any burrs or chips from the mounting surface.

Simply attach the AccuSnap master jaws to the carrier jaw system using the industry standard bolt system.



Step 2:

Snap in the parallels or soft jaws that you require for your set-up and begin machining. Two lock screws are provided for extra holding assurance, but are not necessary to hold parallels in place. Do not overtighten lock screws.

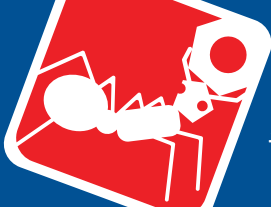


Step 3:

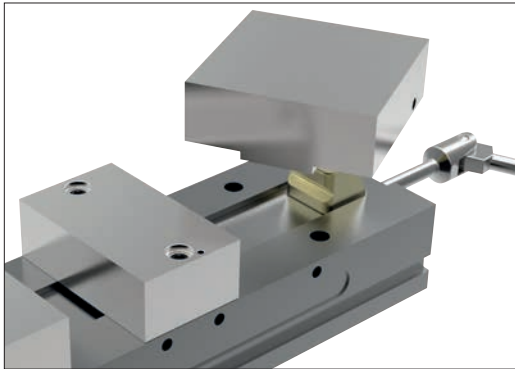
When finished with your job, unlock parallels (if needed) and turn the kick out screw to eject the jaw or parallel.

You are ready to repeat the process for your next job.



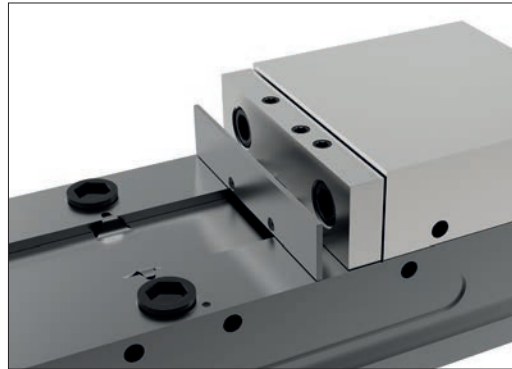


ReLock Accessories



SnapLock Machinable Fixture Jaws

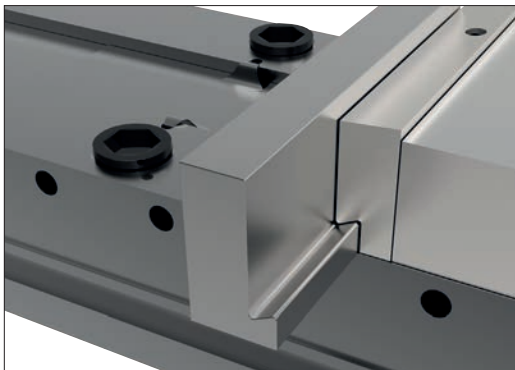
Jaws can be attached, reversed, removed or indexed in a matter of seconds. The jaws are extremely versatile, allowing endless customising possibilities. Jaws are manufactured from steel and high quality aluminium.



SnapLock Carrier Jaws

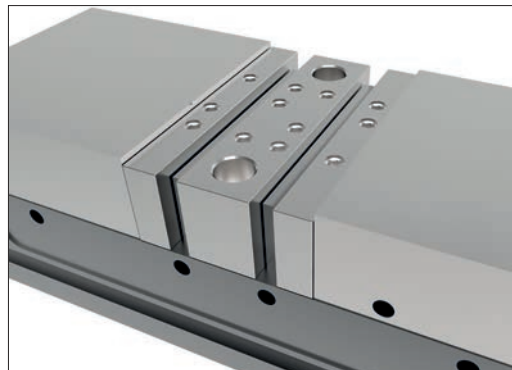
Carrier jaws allow mounting of AccuSnap and QuickChange master jaws or standard bolt-on jaws using an industry standard bolt pattern.

Both the AccuSnap and QuickChange vice jaw systems can be used in conjunction with most vice systems.



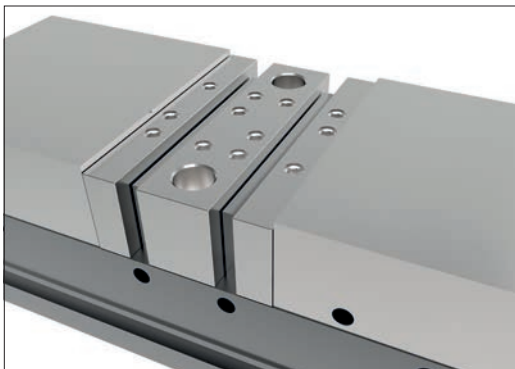
QuickChange Vice System

QuickChange jaws slide into position via a dovetail slot, as shown. The system includes master jaws, parallels, V-blocks, mill angles and machinable soft jaws. Adaptable to most vice systems.



AccuSnap Vice Jaw System

The AccuSnap vice jaw system (pictured), shows master jaws and parallels being used for workpiece set-up. The AccuSnap system allows setup change-over in seconds with extreme accuracy.



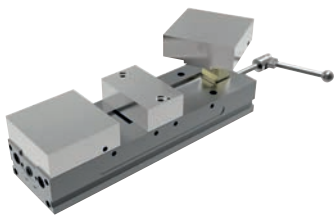
AccuSnap Machinable Fixture Jaws

Ideal for many workholding options of smaller workpieces. Jaws are offered in two thicknesses, from either aluminium or pre-hardened steel.



AccuSnap Workstops

Easily mount to AccuSnap parallels in a variety of configurations. Provides extreme workpiece location accuracy and repeatability. Can be used in conjunction with the AccuSnap presetting gauge to accurately reference your X, Y and Z machine datums.



The SnapLock system's allows simple, quick changeovers between machinable and carrier jaws.

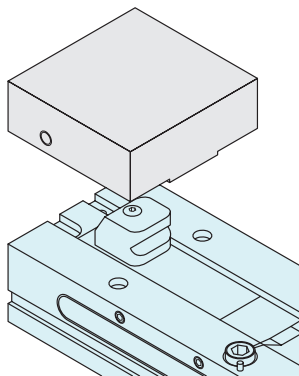
SnapLock Machinable Fixture Jaws

- Can be attached, reversed, removed or indexed in a matter of seconds.
- Extremely versatile, allowing endless customisation possibilities.
- Manufactured from high quality aluminium.

SnapLock Carrier Jaws

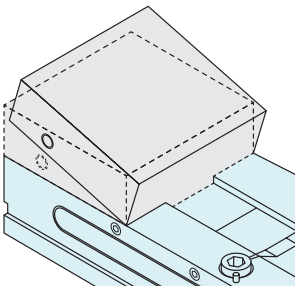
- Allows mounting of AccuSnap and QuickChange master jaws or standard bolt-on jaws using an industry standard bolt size and pattern.

Operation



Step 1

Align the SnapLock outer jaw over the appropriate ReLock vice knuckle

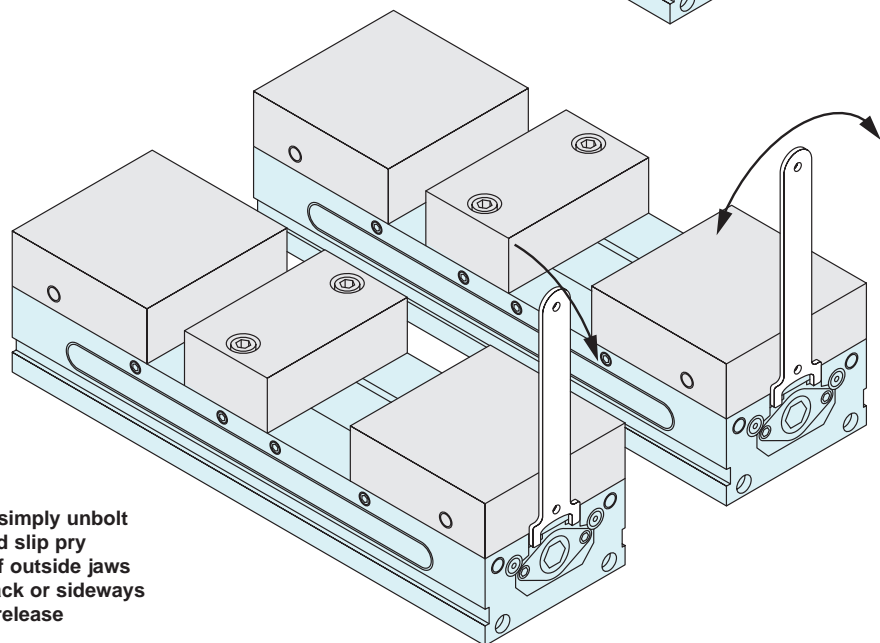
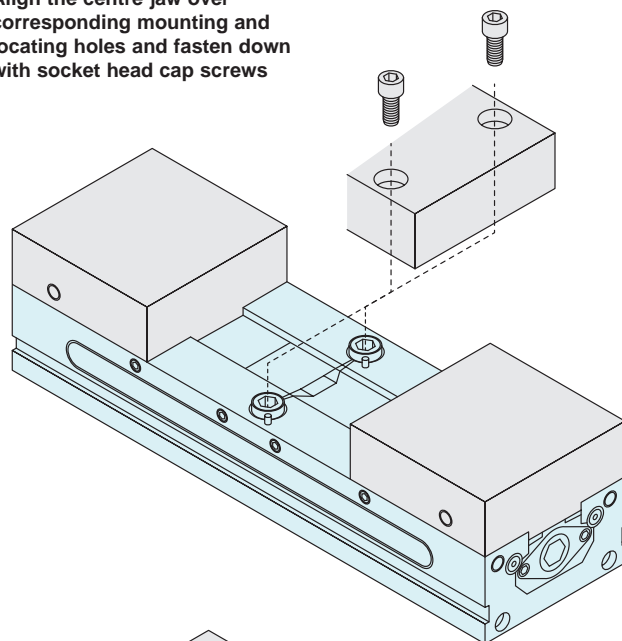


Step 2

Place the front edge of the jaw over the knuckle and press firmly down to "snap" into place

Step 3

Align the centre jaw over corresponding mounting and locating holes and fasten down with socket head cap screws



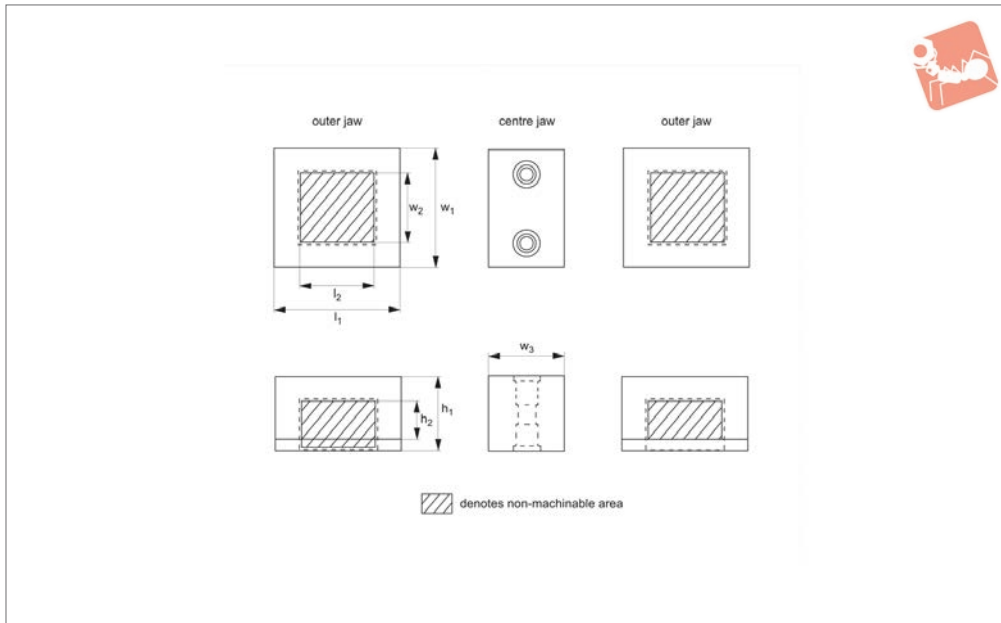
Step 4

For jaw removal, simply unbolt the centre jaw and slip pry wrench in slots of outside jaws as shown; pull back or sideways on the handle to release



Machinable Vice Jaws - SnapLock for ReLock vices

Vice Clamping



19790

VICE CLAMPING

Material

Aluminium. Some sizes are available in steel (1018 or 4140), please call for details.

Technical Notes

Jaws are reversible for additional work-

piece setup.

For jaw capacity when used with vice, see technical pages.

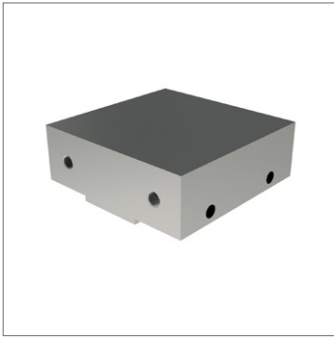
Tips

Only for use with our ReLock Vice system.

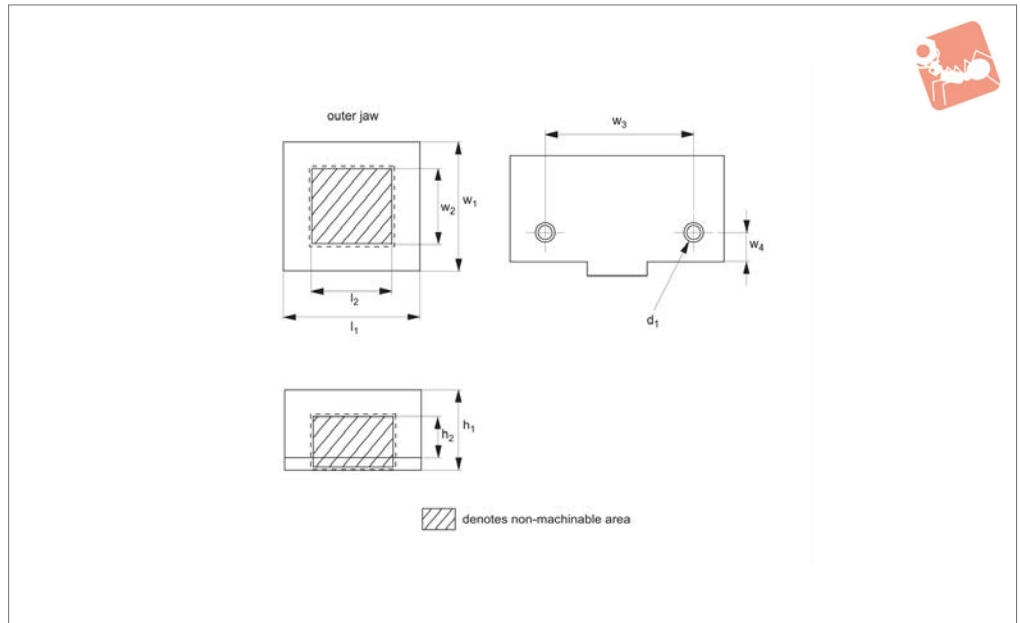
Important Notes

All dimensions are in inches.

Order No.	For vice size	Contents	Type	l_1	l_2	w_1	w_2	w_3	h_1	h_2
19790.W0401	4"	2 x Outer, 1 x Centre	Std.	4.250	2.250	3.94	2.060	2.5	1.50	1.06
19790.W0402	4"	1 x Centre	Std.	-	-	3.94	-	2.5	1.50	-
19790.W0403	4"	1 x Outer	Std.	4.250	2.250	3.94	2.060	-	1.50	1.06
19790.W0411	4"	2 x Outer, 1 x Centre	Tall	4.250	2.250	3.94	2.060	2.5	2.75	1.06
19790.W0412	4"	1 x Centre	Tall	-	-	3.94	-	2.5	2.75	-
19790.W0413	4"	1 x Outer	Tall	4.250	2.250	3.94	2.060	-	2.75	1.06
19790.W0421	4"	2 x Outer, 1 x Centre	Wide	4.250	-	5.94	-	2.5	1.50	-
19790.W0422	4"	1 x Centre	Wide	-	-	5.94	-	2.5	1.50	-
19790.W0423	4"	1 x Outer	Wide	4.250	2.250	5.94	2.060	-	1.50	1.06
19790.W0601	6"	2 x Outer, 1 x Centre	Std.	5.812	3.063	5.94	2.810	3.5	2.00	1.28
19790.W0602	6"	1 x Centre	Std.	-	-	5.94	-	3.5	2.00	-
19790.W0603	6"	1 x Outer	Std.	5.812	3.063	5.94	2.810	-	2.00	1.28
19790.W0611	6"	2 x Outer, 1 x Centre	Tall	5.812	3.063	5.94	2.810	3.5	3.25	1.28
19790.W0612	6"	1 x Centre	Tall	-	-	5.94	-	3.5	3.25	-
19790.W0613	6"	1 x Outer	Tall	5.812	3.063	5.94	2.810	-	3.25	1.28
19790.W0621	6"	2 x Outer, 1 x Centre	Wide	5.812	3.063	7.94	2.810	3.5	2.00	1.28
19790.W0622	6"	1 x Centre	Wide	-	-	7.94	-	3.5	2.00	-
19790.W0623	6"	1 x Outer	Wide	5.812	3.063	7.94	2.810	-	2.00	1.28
19790.W0801	8"	2 x Outer, 1 x Centre	Std.	7.500	3.125	7.94	2.625	4.5	2.50	1.50
19790.W0802	8"	1 x Centre	Std.	-	-	7.94	-	4.5	2.50	-
19790.W0803	8"	1 x Outer	Std.	7.500	3.125	7.94	2.625	-	2.50	1.50
19790.W0811	8"	2 x Outer, 1 x Centre	Tall	7.500	3.125	7.94	2.625	4.5	3.75	1.50
19790.W0812	8"	1 x Centre	Tall	-	-	7.94	-	4.5	3.75	-
19790.W0813	8"	1 x Outer	Tall	7.500	3.125	7.94	2.625	-	3.75	1.50
19790.W0821	8"	2 x Outer, 1 x Centre	Wide	7.500	3.125	9.94	2.625	4.5	2.50	1.50
19790.W0822	8"	1 x Centre	Wide	-	-	9.94	-	4.5	2.50	-
19790.W0823	8"	1 x Outer	Wide	7.500	3.125	9.94	2.625	-	2.50	1.50



19792



VICE CLAMPING

Material

Aluminium. Some sizes are available in steel (1018 or 4140), please call for details.

Technical Notes

For use with single station conversion

plate no. 19759 to convert 2 station ReLock vice into a single station vice. For jaw capacity when used with vice, see technical pages.

Tips

Only for use with our ReLock Vice system.

Important Notes

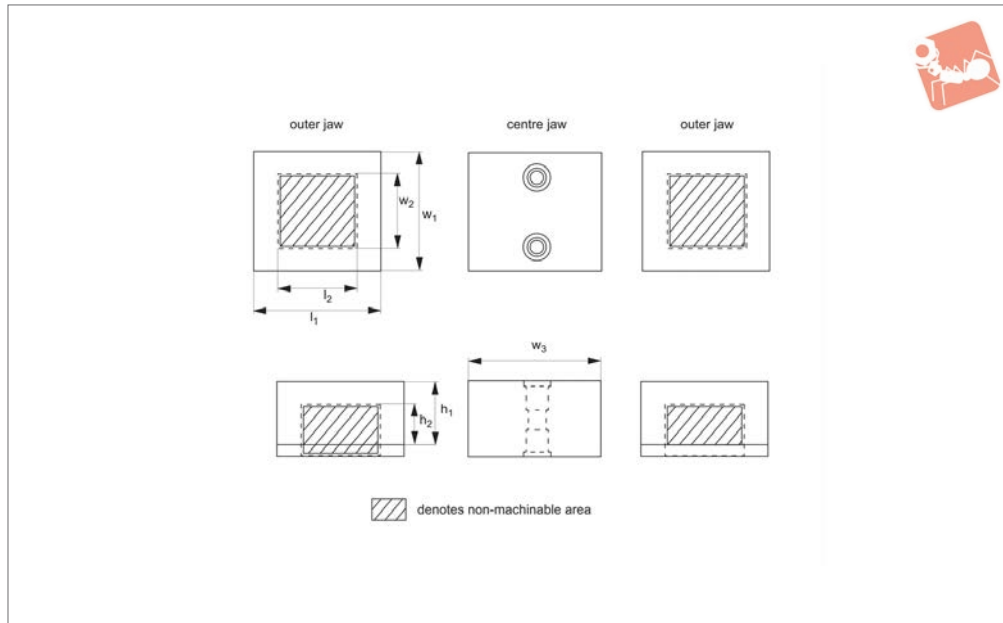
All dimensions are in inches.

Order No.	For vice size	Contents	Type	l_1	l_2	w_1	w_2	w_3	w_4	h_1	h_2	d_1
19792.W0040	4"	1 x Outer	Std.	4.250	2.250	3.94	2.060	2.500	0.687	1.50	1.06	3/8-16x0,63
19792.W0041	4"	1 x Outer	Tall	4.250	2.250	3.94	2.060	2.500	0.687	2.75	1.06	3/8-16x0,63
19792.W0060	6"	1 x Outer	Std.	5.812	3.063	5.94	2.810	3.875	0.937	2.00	1.28	1/2-13x0,75
19792.W0061	6"	1 x Outer	Tall	5.812	3.063	5.94	2.810	3.875	0.937	3.25	1.28	1/2-13x0,75
19792.W0080	8"	1 x Outer	Std.	7.500	3.125	7.94	2.625	4.750	1.218	2.00	1.50	5/8-11x1,30
19792.W0081	8"	1 x Outer	Tall	7.500	3.125	7.94	2.625	4.750	1.218	3.75	1.50	5/8-11x1,30



Machinable Vice Jaws - SnapLock for ReLock vices - full coverage

Vice Clamping



19794

VICE CLAMPING

Material
Aluminium.

For jaw capacity when used with vice, see technical pages.

Important Notes
All dimensions are in inches.

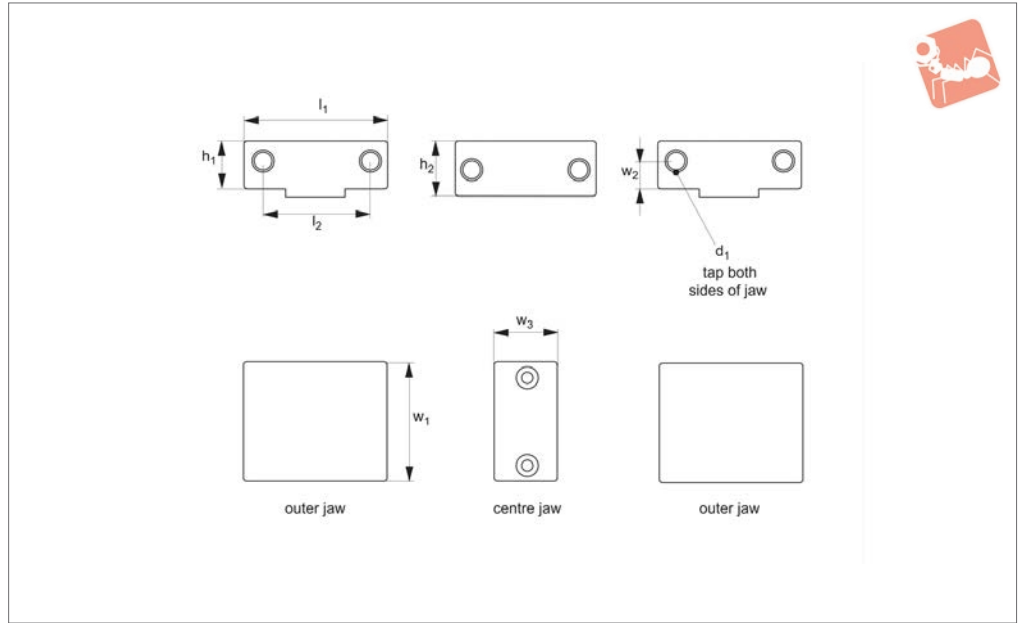
Technical Notes
Jaws are reversible for additional work-piece setup.

Tips
Only for use with our ReLock Vice system.

Order No.	For vice size	Contents	Type	l ₁	l ₂	w ₁	w ₂	w ₃	h ₁	h ₂
19794.W0041	4"	Outer Jaw - 2 x 19790.W0403, Centre Jaw - 1 x 19794.W0042	Std.	4.250	2.250	3.94	2.060	6.500	1.50	1.06
19794.W0042	4"	1 x Centre Jaw	Std.	4.250	2.250	3.94	2.060	6.500	1.50	1.06
19794.W0043	4"	Outer Jaw - 2 x 19790.W0413, Centre Jaw - 1 x 19794.W0044	Tall	4.250	2.250	3.94	2.060	6.500	2.75	1.06
19794.W0044	4"	1 x Centre Jaw	Tall	4.250	2.250	3.94	2.060	6.500	2.75	1.06
19794.W0045	4"	Outer Jaw - 2 x 19790.W0423, Centre Jaw - 1 x 19794.W0046	Wide	4.250	2.250	5.94	2.060	6.500	1.50	1.06
19794.W0046	4"	1 x Centre Jaw	Wide	4.250	2.250	5.94	2.060	6.500	1.50	1.06
19794.W0061	6"	Outer Jaw - 2 x 19790.W0603, Centre Jaw - 1 x 19794.W0062	Std.	5.812	3.063	5.94	2.810	7.875	2.00	1.28
19794.W0062	6"	1 x Centre Jaw	Std.	5.812	3.063	5.94	2.810	7.875	2.00	1.28
19794.W0063	6"	Outer Jaw - 2 x 19790.W0613, Centre Jaw - 1 x 19794.W0064	Tall	5.812	3.063	5.94	2.810	7.875	3.25	1.28
19794.W0064	6"	1 x Centre Jaw	Tall	5.812	3.063	5.94	2.810	7.875	3.25	1.28
19794.W0065	6"	Outer Jaw - 2 x 19790.W0623, Centre Jaw - 1 x 19794.W0066	Wide	5.812	3.063	7.94	2.810	7.875	2.00	1.28
19794.W0066	6"	1 x Centre Jaw	Wide	5.812	3.063	7.94	2.810	7.875	2.00	1.28
19794.W0081	8"	Outer jaw - 2 x 19790.W0803, Centre jaw - 1 x 19794.W0082	Std.	7.500	3.125	7.94	2.625	11.500	2.50	1.50
19794.W0082	8"	1 x Centre Jaw	Std.	7.500	3.125	7.94	2.625	11.500	2.50	1.50
19794.W0083	8"	Outer Jaw - 2 x 19790.W0813, Centre Jaw - 1 x 19794.W0084	Tall	7.500	3.125	7.94	2.625	11.500	3.75	1.50
19794.W0084	8"	1 x Centre Jaw	Tall	7.500	3.125	7.94	2.625	11.500	3.75	1.50
19794.W0085	8"	Outer Jaw - 2 x 19790.W0823, Centre Jaw - 1 x 19794.W0086	Wide	7.500	3.125	9.94	2.625	11.500	2.50	1.50
19794.W0086	8"	1 x Centre Jaw	Wide	7.500	3.125	9.94	2.625	11.500	2.50	1.50



19796



VICE CLAMPING

Material

Outside jaws: aluminium.
Centre jaws: steel.

Technical Notes

Carrier jaws can be used in conjunction

with AccuSnap and QuickChange master jaws.

Outside jaws can be used in conjunction with single station conversion plates.

Tips

Only for use with our ReLock Vice system.

Important Notes

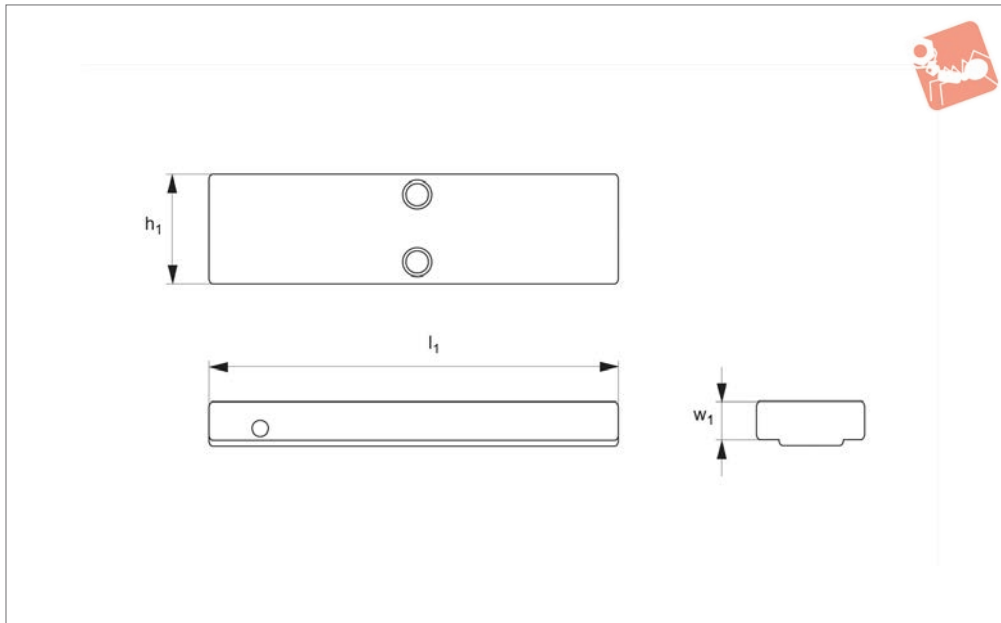
All dimensions are in inches.

Order No.	Vice size	Contents	Material	l_1	l_2	w_1	w_2	w_3	h_1	h_2	d_1
19796.W0401	4"	2 x Outer, 1 x Centre	Aluminium	3.94	2.500	3.812	0.687	1.25	1.12	1.35	3/8-16
19796.W0403	4"	2 x Outer	Aluminium	3.94	2.500	3.812	0.687	-	1.12	-	3/8-16
19796.W0601	6"	2 x Outer, 1 x Centre	Aluminium	5.94	3.875	4.750	0.937	1.50	1.52	1.85	1/2-13
19796.W0603	6"	2 x Outer	Aluminium	5.94	3.875	4.750	0.937	-	1.52	-	1/2-13
19796.W0801	8"	2 x Outer, 1 x Centre	Aluminium	7.94	4.750	6.125	1.218	1.98	2.12	2.35	5/8-11
19796.W0803	8"	2 x Outer	Aluminium	7.94	4.750	6.125	1.218	-	2.12	-	5/8-11
19796.W1401	4"	2 x Outer, 1 x Centre	Steel	3.94	2.500	3.812	0.687	1.25	1.12	1.35	3/8-16
19796.W1402	4"	1 x Centre	Steel	3.94	2.500	-	0.687	1.25	1.12	1.35	3/8-16
19796.W1403	4"	2 x Outer	Steel	3.94	2.500	3.812	0.687	-	1.12	-	3/8-16
19796.W1601	6"	2 x Outer, 1 x Centre	Steel	5.94	3.875	4.750	0.937	1.50	1.52	1.85	1/2-13
19796.W1602	6"	1 x Centre	Steel	5.94	3.875	-	0.937	1.50	-	1.85	1/2-13
19796.W1603	6"	2 x Outer	Steel	5.94	3.875	4.750	0.937	-	1.52	-	1/2-13
19796.W1801	8"	2 x Outer, 1 x Centre	Steel	7.94	4.750	6.125	1.218	1.98	2.12	2.35	5/8-11
19796.W1802	8"	1 x Centre	Steel	7.94	4.750	-	1.218	1.98	-	2.35	5/8-11
19796.W1803	8"	2 x Outer	Steel	7.94	4.750	6.125	1.218	-	2.12	-	5/8-11



Fixture Plate - SnapLock for ReLock vices

Vice Clamping



19798

VICE CLAMPING

Material

Aluminium.

pieces with difficult clamping of locating points.

Important Notes

All dimensions are in inches.

Technical Notes

Ideal for holding many small parts or work-

Tips

Only for use with our ReLock Vice system.

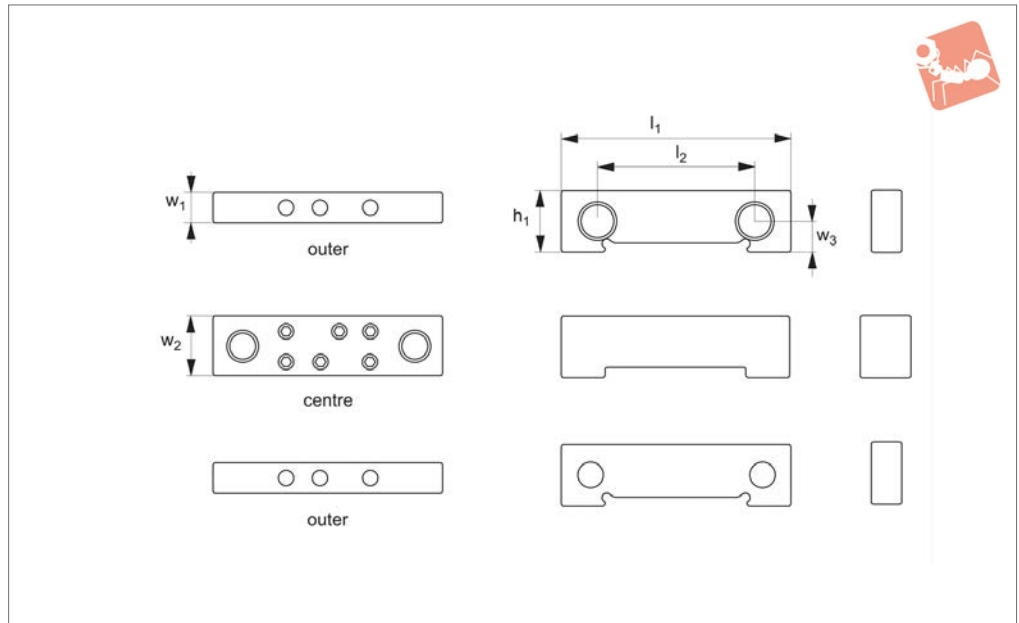
Order No.	Vice size	l_1	w_1	h_1
19798.W0040	4"	16.0	1.5	4
19798.W0041	4"	16.0	1.5	6
19798.W0060	6"	20.5	2.0	6
19798.W0061	6"	20.5	2.0	8
19798.W0080	8"	28.5	2.5	8
19798.W0081	8"	28.5	2.5	10



VICE CLAMPING



19810



Material

Body: 80000 psi ductile cast iron.

Technical Notes

Adaptable to most vice jaw systems. When

used with ReLock vice, mount AccuSnap master jaws to SnapLock carrier jaws to fit all AccuSnap jaw components. Install AccuSnap master jaws to SnapLock carrier

jaws on vice for squareness.

Important Notes

All dimensions are in inches.

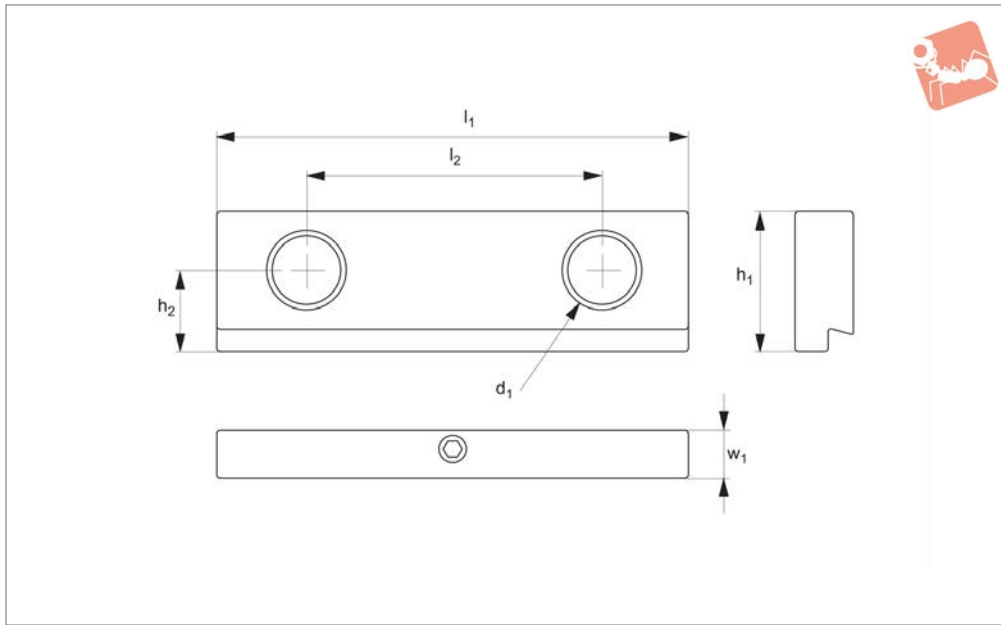
Order No.	Vice size	Contents	l_1 ± 0.001	l_2	w_1 ± 0.0005	w_2 ± 0.0005	w_3	h_1 ± 0.001
19810.W0401	4"	2 x Outer, 1 x Centre	3.98	2.500	0.560	-	0.687	1.35
19810.W0403	4"	2 x Outer	3.98	2.500	0.560	-	0.687	1.35
19810.W0402	4"	1 x Centre	3.98	2.500	-	1.25	0.687	1.35
19810.W0601	6"	2 x Outer, 1 x Centre	5.98	3.875	0.750	-	0.937	1.85
19810.W0603	6"	2 x Outer	5.98	3.875	0.750	-	0.937	1.85
19810.W0602	6"	1 x Centre	5.98	3.875	-	1.50	0.937	1.85
19810.W0801	8"	2 x Outer, 1 x Centre	7.98	4.750	1.125	-	1.218	2.35
19810.W0802	8"	2 x Outer	7.98	4.750	1.125	-	1.218	2.35
19810.W0803	8"	1 x Centre	7.98	4.750	-	2.00	1.218	2.35



Master Jaws - QuickChange

for use on SnapLock carrier jaws 19796

Vice Clamping



19850

VICE CLAMPING

Material

Body: 80000 psi ductile cast iron.

Technical Notes

These master jaws enable our ReLock vice snap lock carrier jaws to accept all

QuickChange jaw components, providing complete flexibility. Install QuickChange master jaws to SnapLock carrier jaws on vice for squareness. Prior to installation of master jaws remove any burrs, chips or dirt

from vice mounting surface.

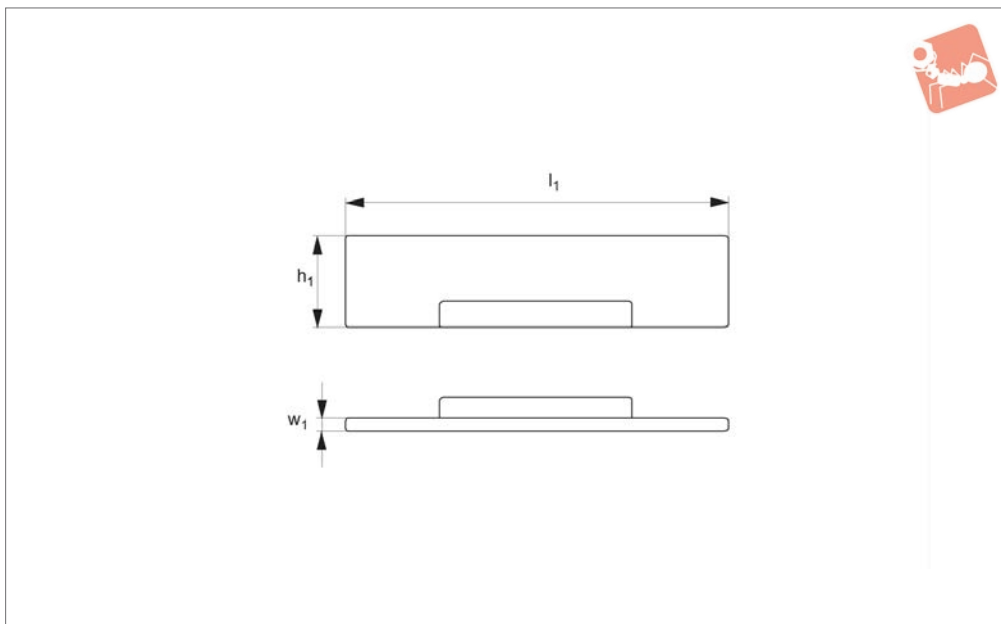
Important Notes

All dimensions are in inches.

Order No.	For vice size	l_1	l_2	h_1	h_2	w_1	d_1
19850.W0040	4"	4.06	2.500	1.235	0.687	0.560	3/8-16 S.H.C.S.
19850.W0060	6"	6.12	3.875	1.735	0.937	0.735	1/2-13 S.H.C.S.
19850.W0080	8"	8.12	4.750	2.230	1.128	1.105	5/8-11 S.H.C.S.



19852



Material

Body: 80000 psi ductile cast iron.

jaws no. 19850.

Technical Notes

Designed for use with QuickChange master

Important Notes

Supplied as a pair.

All dimensions are in inches.

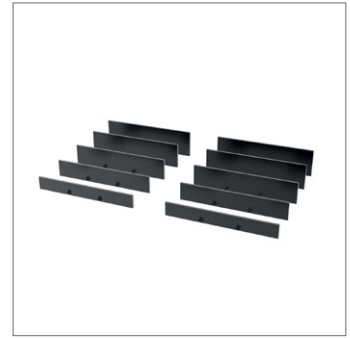
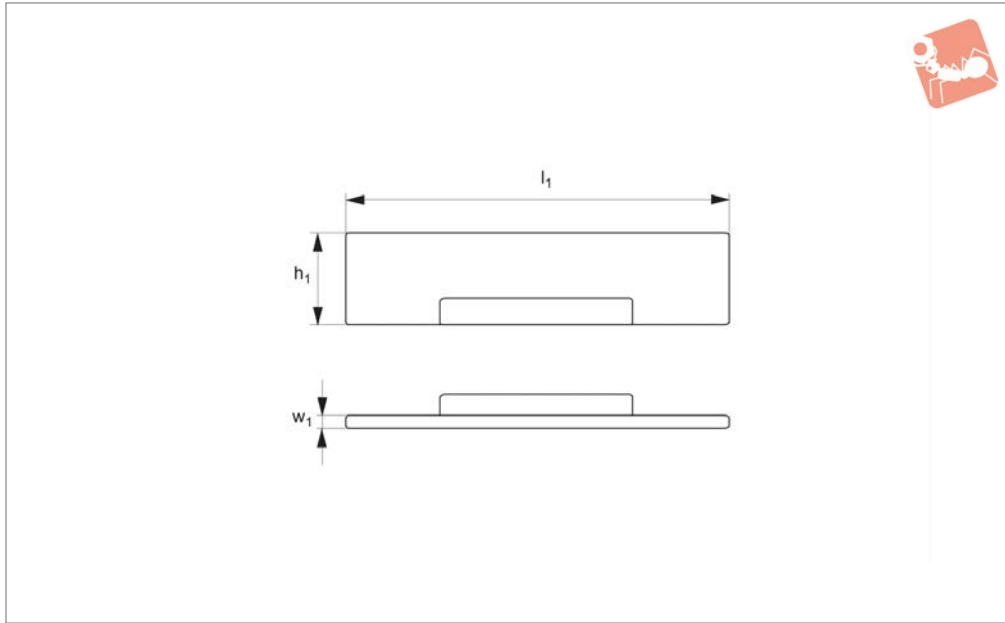
Order No.	For vice size	l_1	h_1 ± 0.0005	w_1
19852.W0041	4"	3.98	0.500	0.118
19852.W0042	4"	3.98	0.625	0.118
19852.W0043	4"	3.98	0.750	0.118
19852.W0044	4"	3.98	0.875	0.118
19852.W0045	4"	3.98	1.000	0.118
19852.W0046	4"	3.98	1.062	0.118
19852.W0047	4"	3.98	1.125	0.118
19852.W0048	4"	3.98	1.190	0.118
19852.W0061	6"	5.98	0.750	0.118
19852.W0062	6"	5.98	0.875	0.118
19852.W0063	6"	5.98	1.000	0.118
19852.W0064	6"	5.98	1.125	0.118
19852.W0065	6"	5.98	1.250	0.118
19852.W0066	6"	5.98	1.375	0.118
19852.W0067	6"	5.98	1.500	0.118
19852.W0068	6"	5.98	1.625	0.118
19852.W0069	6"	5.98	1.690	0.118
19852.W0081	8"	7.98	1.000	0.118
19852.W0082	8"	7.98	1.250	0.118
19852.W0083	8"	7.98	1.375	0.118
19852.W0084	8"	7.98	1.500	0.118
19852.W0085	8"	7.98	1.625	0.118
19852.W0086	8"	7.98	1.750	0.118
19852.W0087	8"	7.98	1.875	0.118
19852.W0088	8"	7.98	2.000	0.118
19852.W0089	8"	7.98	2.125	0.118



Vice Parallel Sets - QuickChange

for use with QuickChange master jaws 19850

Vice Clamping



19854

VICE CLAMPING

Material

Body: 80000 psi ductile cast iron.

jaws no. 19850.

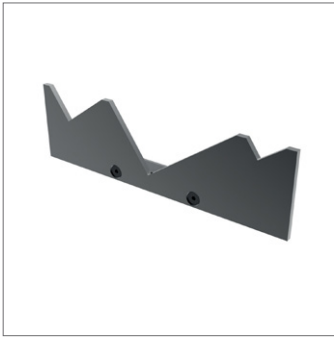
Important Notes

All dimensions are in inches.

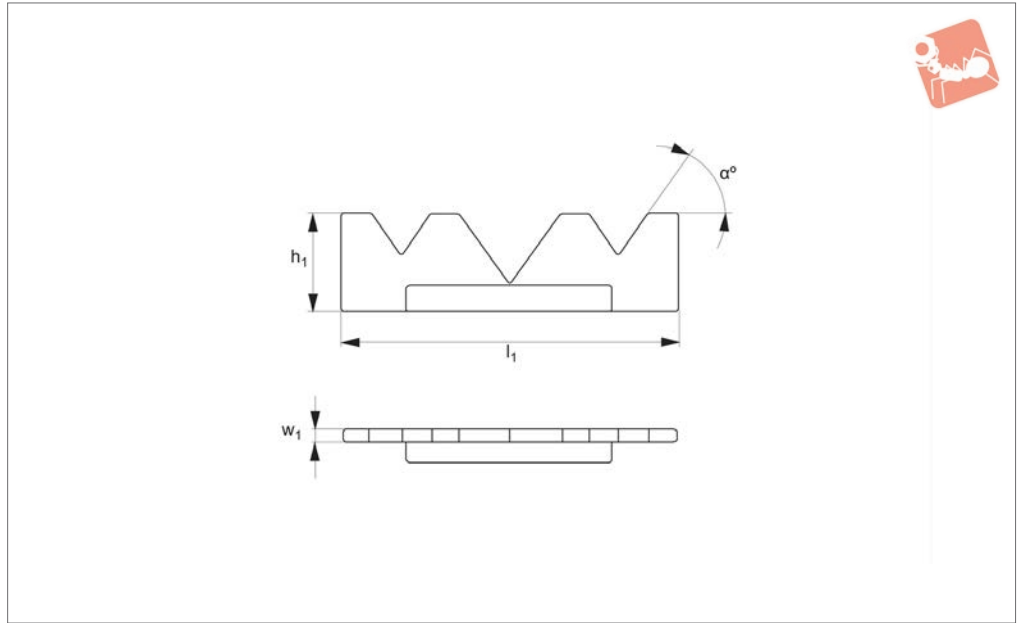
Technical Notes

Designed for use with QuickChange master

Order No.	For vice size	Type	l ₁	w ₁	Set contents 1 pair per size h ₁										
					±0.0005										
19854.W0040	4"	Basic	3.98	0.118	0,500	0,750	1,000	1,125	1,190						
19854.W0060	6"	Basic	5.98	0.118	0,750	1,000	1,250	1,500	1,625						
19854.W0080	8"	Basic	7.98	0.118	1,000	1,250	1,500	1,750	2,000						
19854.W0140	4"	Advanced	3.98	0.118	0,500	0,625	0,750	0,875	1,000	1,125	1,062	1,190			
19854.W0160	6"	Advanced	5.98	0.118	0,750	0,875	1,000	1,125	1,250	1,375	1,500	1,625	1,690		
19854.W0180	8"	Advanced	7.98	0.118	1,000	1,250	1,375	1,500	1,625	1,750	1,875	2,000	2,125		



19856



Material

Body: 80000 psi ductile cast iron.

19850.

All dimensions are in inches.

Technical Notes

For use with QuickChange master jaw

Important Notes

Sold individually, for a pair please order quantity of 2.

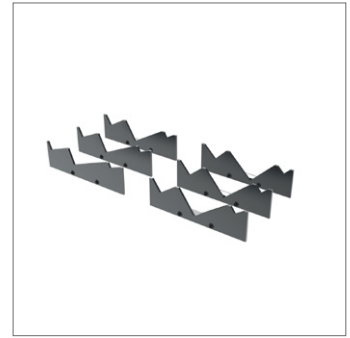
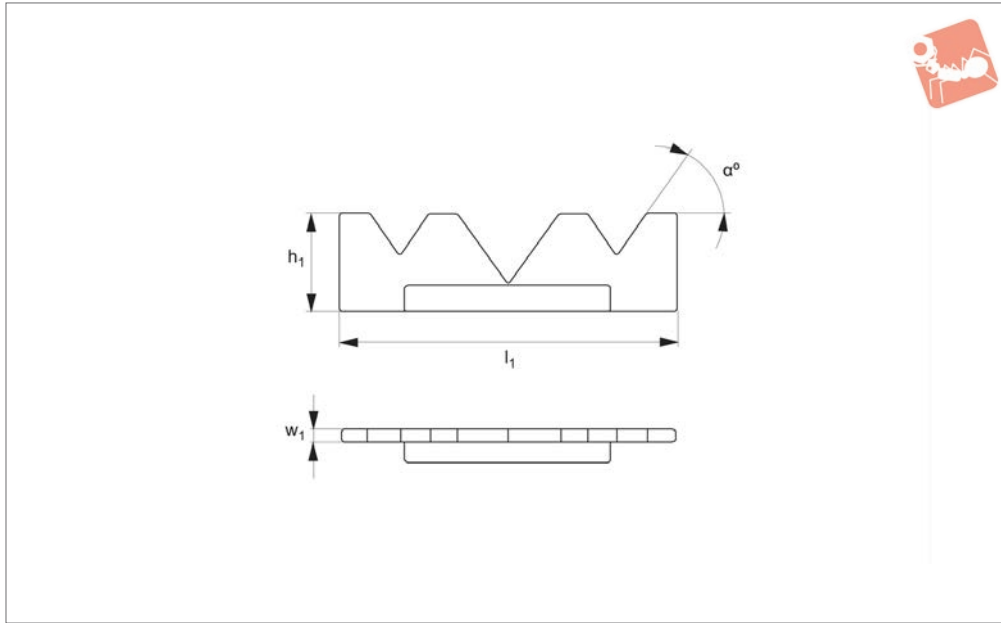
Order No.	For vice size	l_1	h_1	w_1	α
19856.W0040	4"	4	1.24	0.118	20
19856.W0041	4"	4	1.24	0.118	25
19856.W0042	4"	4	1.24	0.118	30
19856.W0043	4"	4	1.24	0.118	35
19856.W0044	4"	4	1.24	0.118	40
19856.W0045	4"	4	1.24	0.118	45
19856.W0060	6"	6	1.74	0.118	20
19856.W0061	6"	6	1.74	0.118	25
19856.W0062	6"	6	1.74	0.118	30
19856.W0063	6"	6	1.74	0.118	35
19856.W0064	6"	6	1.74	0.118	40
19856.W0065	6"	6	1.74	0.118	45
19856.W0080	8"	8	2.23	0.118	20
19856.W0081	8"	8	2.23	0.118	25
19856.W0082	8"	8	2.23	0.118	30
19856.W0083	8"	8	2.23	0.118	35
19856.W0084	8"	8	2.23	0.118	40
19856.W0085	8"	8	2.23	0.118	45



Vice Mill Angle Sets - QuickChange

for use with QuickChange master jaws 19850

Vice Clamping



19858

VICE CLAMPING

Material

Body: 80000 psi ductile cast iron.

19850.

Technical Notes

For use with QuickChange master jaw

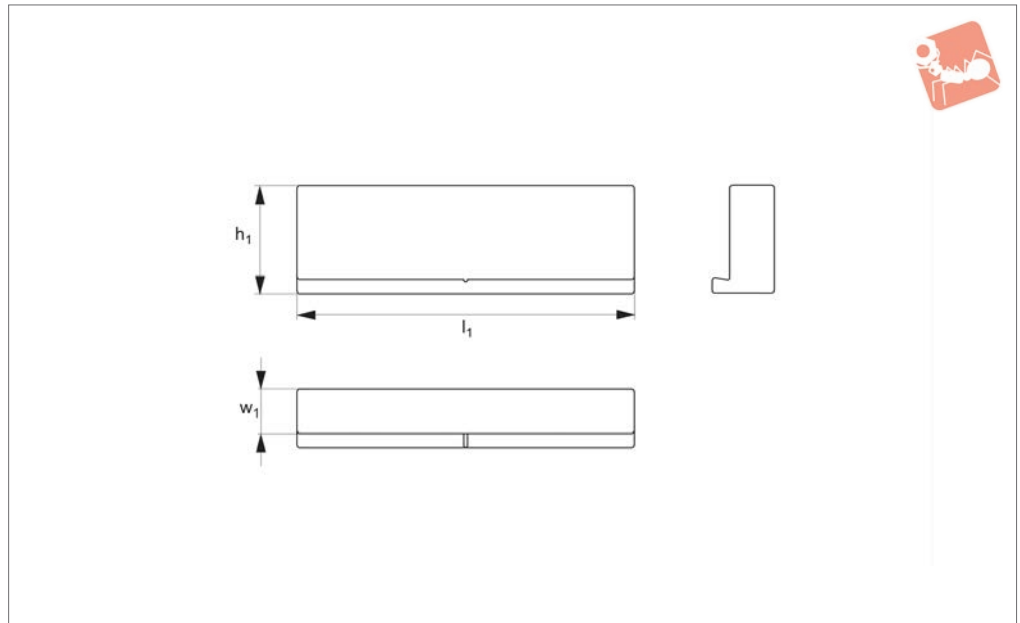
Important Notes

All dimensions are in inches.

Order No.	For vice size	l_1	h_1	w_1	Set contents 1 pair each of α°
19858.W0040	4"	4	1.24	0.118	20° 25° 30° 35° 40° 45°
19858.W0060	6"	6	1.74	0.118	20° 25° 30° 35° 40° 45°
19858.W0080	8"	8	2.23	0.118	20° 25° 30° 35° 40° 45°



19862



Material

Aluminium or steel.

19850.

All dimensions are in inches.

Technical Notes

For use with QuickChange master jaw

Important Notes

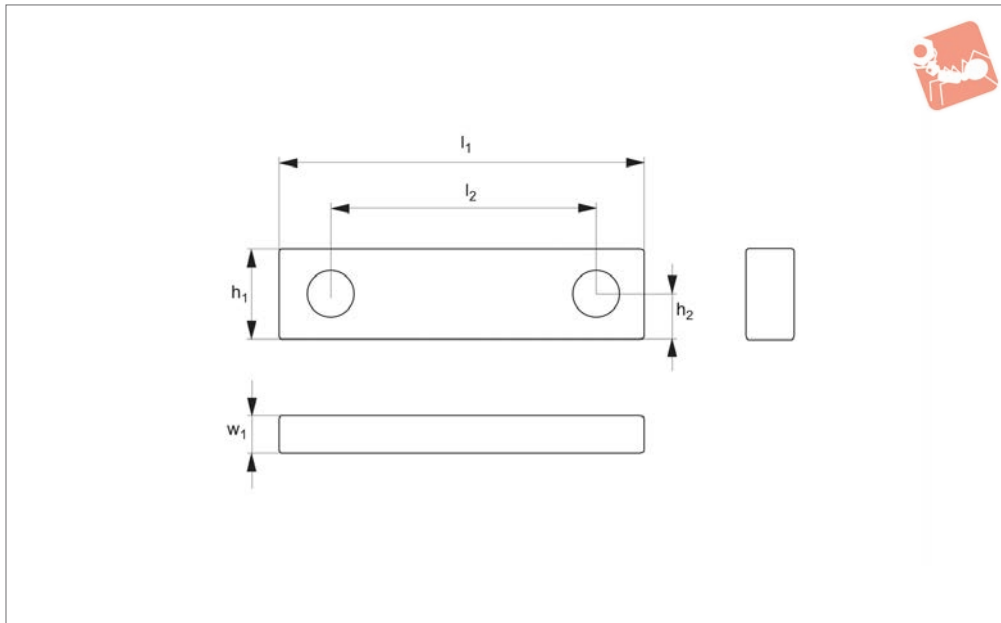
Sold as individually, for a pair please order quantity of 2.

Order No.	For vice size	Material	l_1	h_1	w_1
19862.W0040	4"	Aluminium	4	1.5	0.69
19862.W0041	4"	Aluminium	4	1.5	1.38
19862.W0060	6"	Aluminium	6	2.0	0.75
19862.W0061	6"	Aluminium	6	2.0	1.50
19862.W0080	8"	Aluminium	8	2.5	1.25
19862.W0081	8"	Aluminium	8	2.5	2.50
19862.W0140	4"	Steel	4	1.5	0.69
19862.W0141	4"	Steel	4	1.5	1.38
19862.W0160	6"	Steel	6	2.0	0.75
19862.W0161	6"	Steel	6	2.0	1.50
19862.W0180	8"	Steel	8	2.5	1.25
19862.W0181	8"	Steel	8	2.5	2.50



Soft Vice Jaws - Universal bolt-on

Vice Clamping



19890

VICE CLAMPING

Material

Aluminium.

Important Notes

All dimensions are in inches.

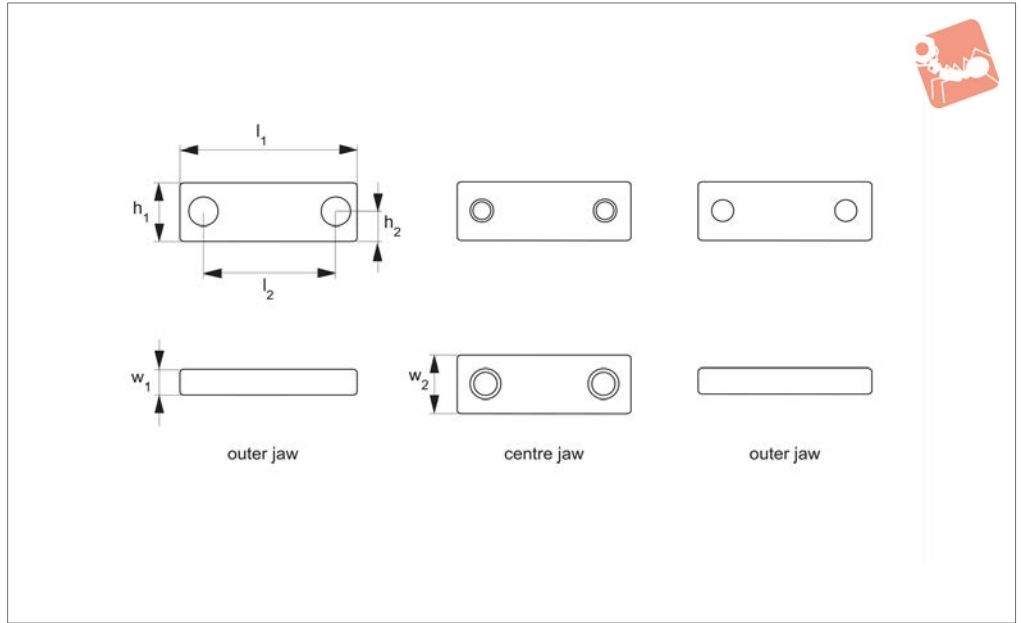
Technical Notes

For use with most industry standard vices.

Order No.	For vice size	l_1	l_2	h_1	h_2	w_1
19890.W0040	4"	5	2.500	1.5	0.687	1.00
19890.W0060	6"	7	3.875	2.0	0.937	1.25
19890.W0080	8"	9	4.750	2.5	1.128	2.00



19892



VICE CLAMPING

Material

Steel.

Technical Notes

Centre jaw only for use with ReLock vice

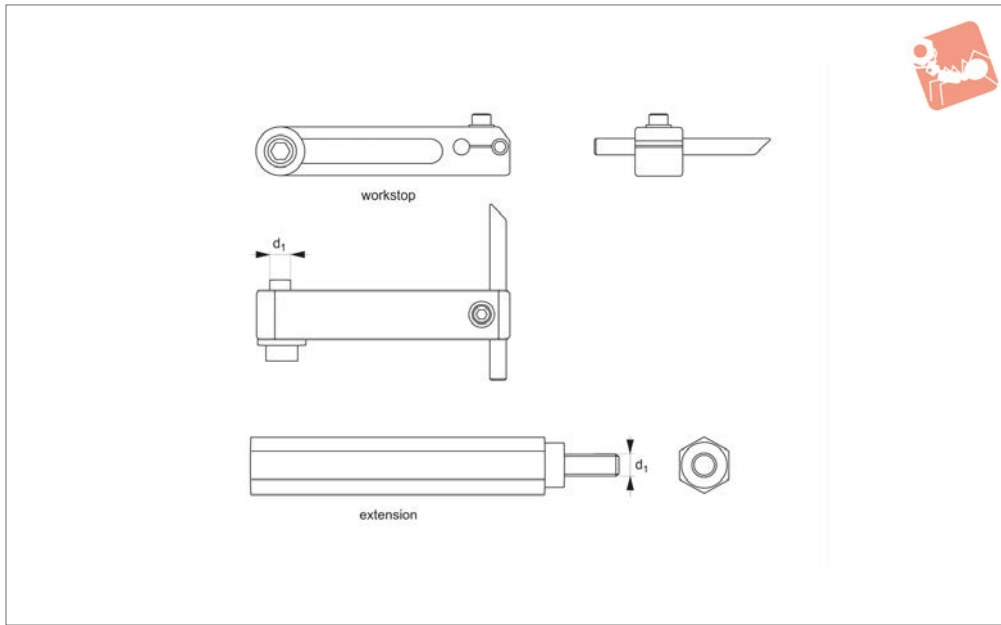
system. Outside jaws fit most standard vice bolt hold patterns.

Install these hard jaws on SnapLock carrier jaws on vice for squareness.

Important Notes

All dimensions are in inches.

Order No.	For vice size	l_1	l_2	h_1	h_2	w_1	w_2	Set contents
19892.W0401	4"	3.98	2.500	1.35	0.687	0.560	1.25	2 x Outer, 1 x Centre
19892.W0402	4"	3.98	-	1.35	-	-	1.25	1 x Centre
19892.W0403	4"	3.98	2.500	1.35	0.687	0.560	-	2 x Outer
19892.W0601	6"	5.98	3.875	1.85	0.937	0.750	1.50	2 x Outer, 1 x Centre
19892.W0602	6"	5.98	-	1.85	-	-	1.50	1 x Centre
19892.W0603	6"	5.98	3.875	1.85	0.937	0.750	-	2 x Outer
19892.W0801	8"	7.98	4.750	2.35	1.218	1.125	1.98	2 x Outer, 1 x Centre
19892.W0802	8"	7.98	-	2.35	-	-	1.98	1 x Centre
19892.W0803	8"	7.98	4.750	2.35	1.218	1.125	-	2 x Outer



19894

VICE CLAMPING

Material

Steel.

Technical Notes

Multiple extension pieces can be used to create longer offset.

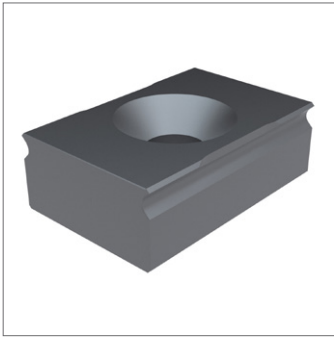
Important Notes

***Design change was made to the 19752.W... vice:** 3/8-16 tapped hole was modified to a 5/16-18 tapped hole. Check your vice to verify the size you need before

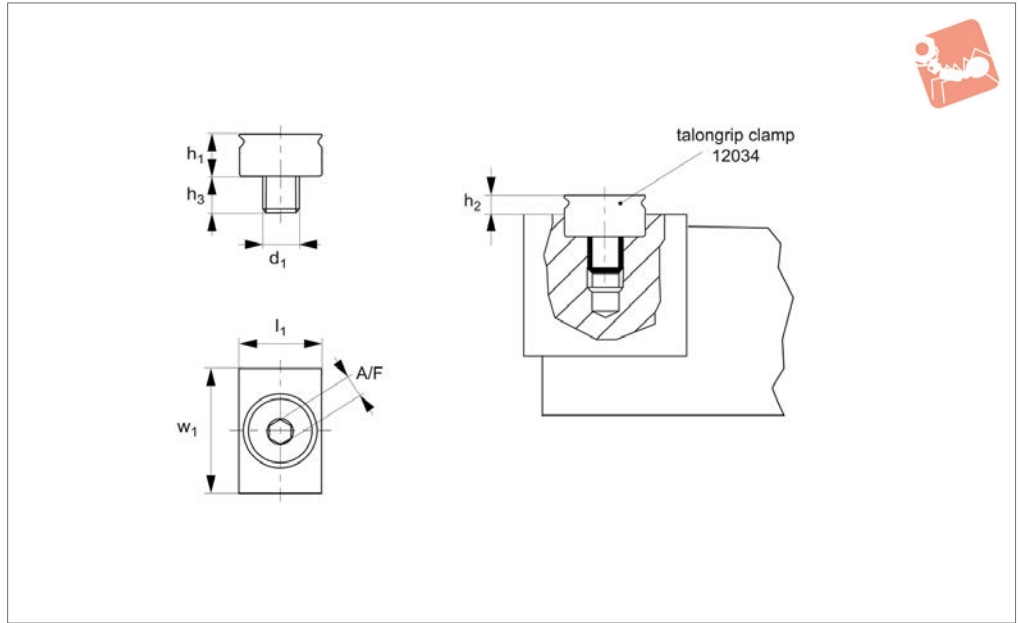
ordering.

All dimensions are in inches.

Order No.	For vice size	Type	Extension length	Thread size d_1
19894.W0401	4"	Workstop	-	5/16-18
19894.W0402	4"	Extension	4	5/16-18
19894.W0601	6"	Workstop	-	5/16-18*
19894.W0602	6"	Extension	6	5/16-18*
19894.W0611	6"	Workstop	-	3/8-16*
19894.W0612	6"	Extension	6	3/8-16*
19894.W0801	8"	Workstop	-	1/2-13
19894.W0802	8"	Extension	8	1/2-13



12034



Material

Steel, hardened (HRc 52-54).

Technical Notes

Typically used in conjunction with pitbull

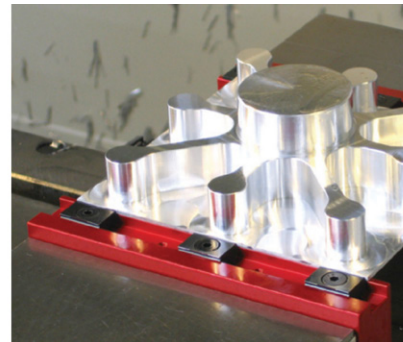
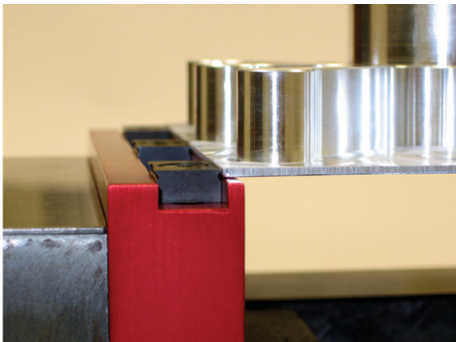
(part no. 12301) or Dynaforce (part no. 12010) clamps.

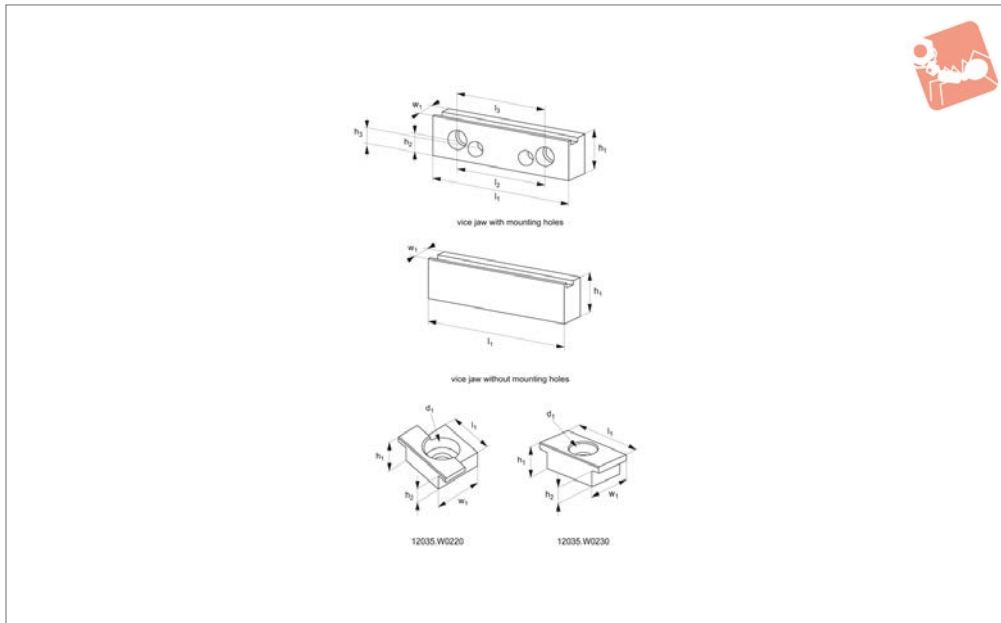
Allows aggressive clamping on as little as 1,5mm of material.

Tips

A further option includes an adaptor to suit 100mm and 150mm vices - see part no. 12035.

Order No.	d ₁	Grip height h ₂	h ₁	h ₃	l ₁	w ₁	A/F	Qty/pack	Weight g
12034.W0050	M 5	1,5 to 1,9	6.4	6.0	12.7	19.1	3	2	12
12034.W0075	M 5	1,5 to 3,0	7.9	8.1	19.1	19.1	3	2	22
12034.W0100	M 5	1,5 to 3,0	7.9	8.1	25.4	19.1	3	2	30
12034.W0150	M 8	1,5 to 5,6	12.7	6.0	25.4	25.4	5	1	37





12035

VICE CLAMPING

Material

Steel, heat-treated.

Technical Notes

The vice jaws for the Talongrip clamps increase the functionality of your 100 and 150mm vices (4" or 6").

This is a simple bolt-on system that allows

you to perform aggressive machining operations whilst clamping on as little as 1,5mm.

Ideal for small batch sizes or when building a fixture is not economical.

Tips

Supplied with one jawstop (either part no.

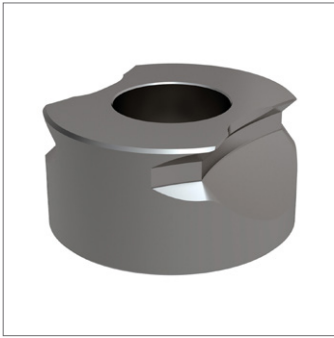
12035.W0220 or .W0230 - see table) and for individual Talongrips (either part no. 12034.W0050 or .W0075).

Important Notes

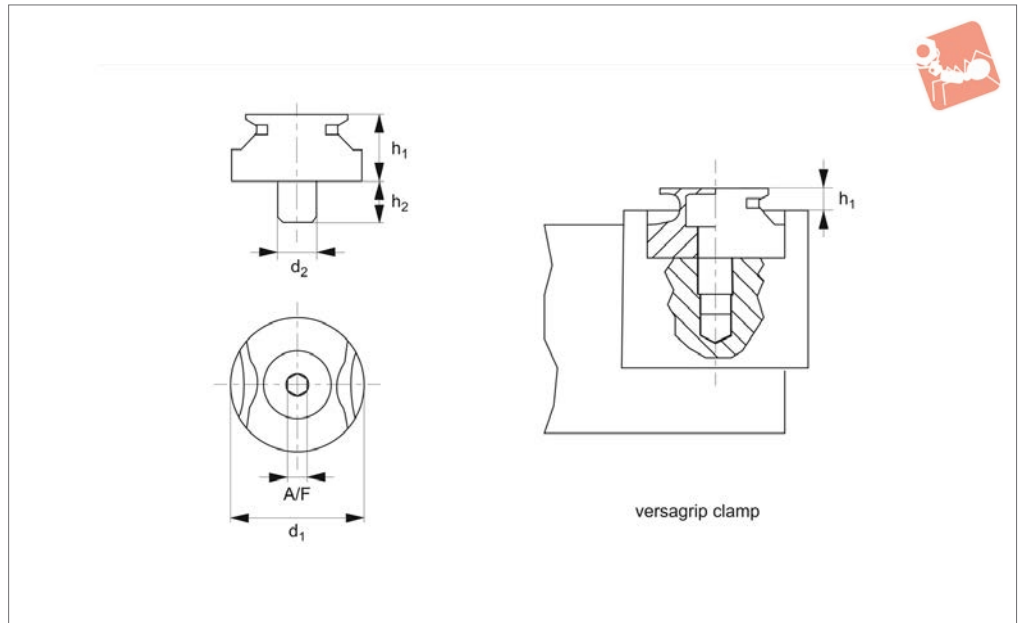
Set includes a pair of vice jaws, four talongrip clamps and one stop (part no.12035.W0220).

Order No.	For vice size	Type	Jaw type	Vice jaw	Vice jaw Stop	Talongrip clamps	Weight g
12035.W0010	4"	Vice jaw set	With holes	2 Off	1 pc 12035.W0220	4 pc 12034.W0050	1370
12035.W0015	4"/6"	Vice jaw set	With holes	2 Off	1 pc 12035.W0220	4 pc 12034.W0050	2290
12035.W0020	6"	Vice jaw set	With holes	2 Off	1 pc 12035.W0220	4 pc 12034.W0050	3220
12035.W0025	6"/8"	Vice jaw set	With holes	2 Off	1 pc 12035.W0230	4 pc 12034.W0075	5570
12035.W0110	-	Vice jaw set	W/o holes	2 Off	1 pc 12035.W0220	4 pc 12034.W0050	1490
12035.W0115	-	Vice jaw set	W/o holes	2 Off	1 pc 12035.W0220	4 pc 12034.W0050	2570
12035.W0120	-	Vice jaw set	W/o holes	2 Off	1 pc 12035.W0230	4 pc 12034.W0050	3420
12035.W0220	-	Jaw stop small	-	-	-	-	6
12035.W0230	-	Jaw stop large	-	-	-	-	10

Order No.	d ₁	h ₁	h ₂	h ₃	l ₁	l ₂	l ₃	w ₁
12035.W0010	-	37.6	-	17.5	100	-	63.5	25.4
12035.W0015	-	43.9	23.9	17.5	150	98.6	63.5	25.4
12035.W0020	-	43.9	-	23.9	200	-	98.6	25.4
12035.W0025	-	62.2	30.9	23.9	200	120.7	98.3	31.8
12035.W0110	-	37.6	-	-	100	-	-	25.4
12035.W0115	-	43.9	-	-	150	-	-	25.4
12035.W0120	-	43.9	-	-	200	-	-	25.4
12035.W0220	M 5	6.4	5.0	-	19	-	-	12.7
12035.W0230	M 5	7.9	5.7	-	19	-	-	12.7



12036.1



Material

Steel, hardened (HRc 52-54).

Technical Notes

The hardened grip has penetrating teeth designed to bite into the workpiece

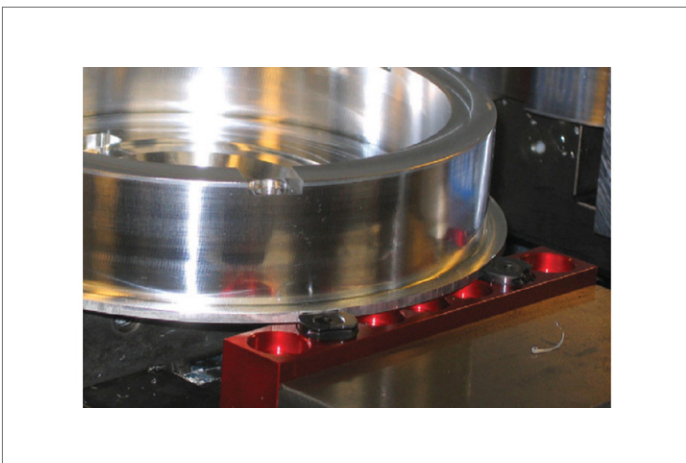
preventing lateral and its horizontal movement.

These grips will even hold flame cut parts and parts with negative drafts.

Tips

A further option includes an adaptor to suit 100mm and 150mm vices - see part no. 12037.

Order No.	h_1	h_2	d_1	d_2	Grip height h_1	A/F	Qty/pack	Weight g
12036.W0175	9.5	5.9	19.1	M5	1,5 to 3,0	4	2	18

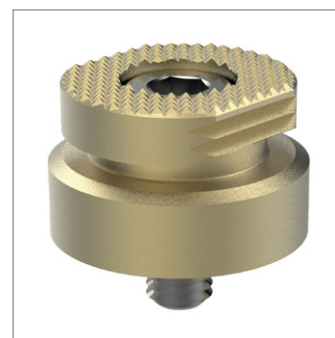
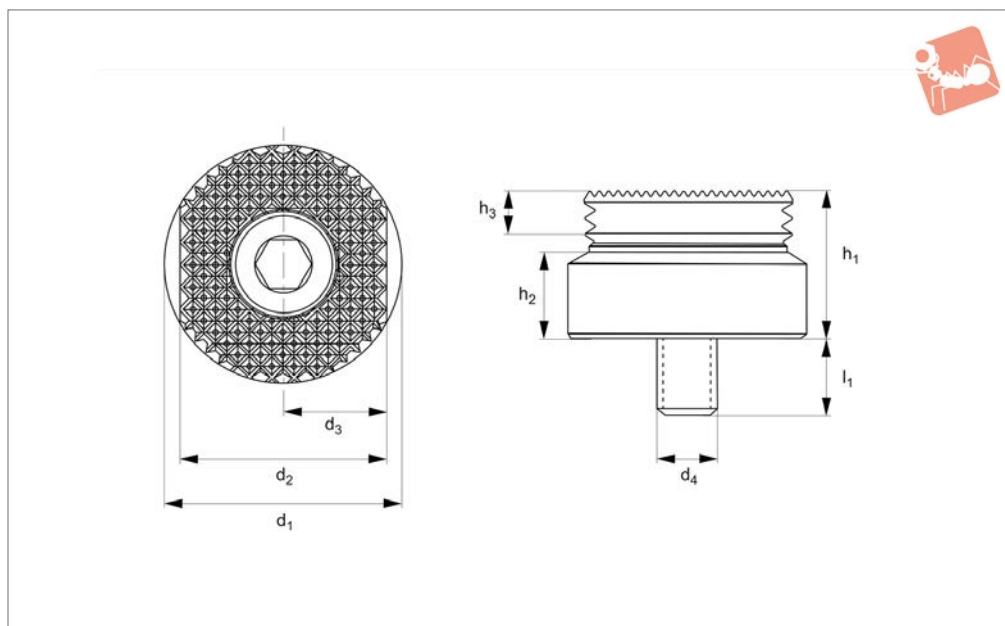




Versagrip Gripper

heavy duty

Vice Clamping



12036.2

VICE CLAMPING

Technical Notes

Designed for those aggressive operations on harder materials while providing the versatility to hold just about any shape. Standard gripping height (.200") or

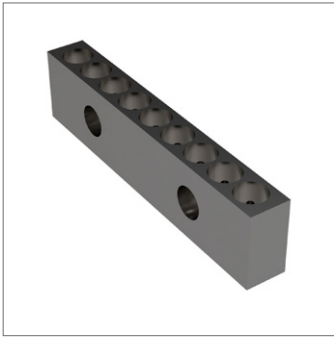
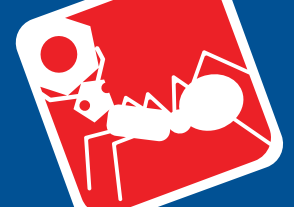
elevated workpiece for cutter clearance around jaws by resting part on the original Versagrip gripper or custom made pucks in the Versa pockets. Rotatable, flat, serrated top face for additional holding force in

horizontal pockets in jaws or hard stops.

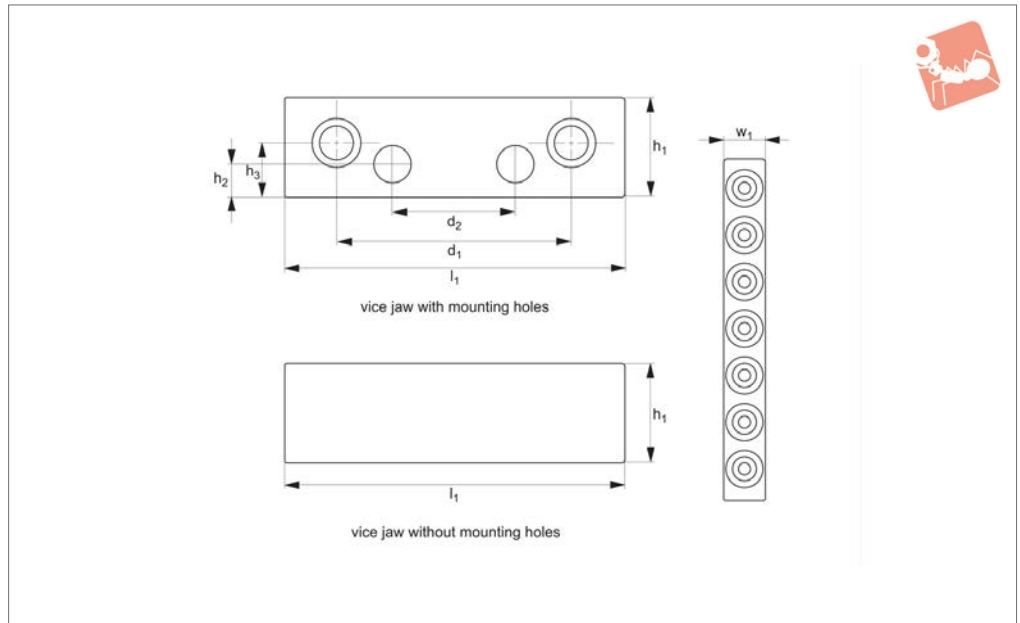
Tips

Max. vice torque per pair of grips - 6" vice: 35-40 Lb/Fts (47,5-54,2 Nm.).

Order No.	h_1	h_2	h_3	d_1	d_2	d_3	d_4	l_1	Qty/pack	Weight g
12036.W0570	11.94	6.73	5.21	19,00-19,05	16.61	8.31	M 5	6.05	2	18



12037



Material

Steel, hardened (52-54 HRC).

Technical Notes

The Versagrip jaws increase the functionality of your 100 and 150mm vices. This is a simple bolt-on system that allows you to perform aggressive machining operations

whilst clamping on as little as 1,5mm for irregular shaped parts.

Ideal for small batch sizes or when building a fixture is not economical.

Tips

Has penetrating teeth designed to bite into your workpiece to prevent lateral and horizontal movement.

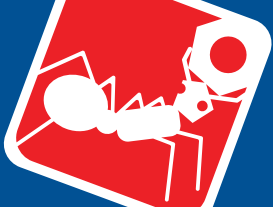
They will hold flame cut parts, castings and even parts with negative draft.

Important Notes

Set includes a pair of vice jaws, and four Versagrip clamps, part no. 12036.W0175.

Order No.	For vice size	Type	Jaw type	Vice jaw	Versagrip clamps	d ₁	d ₂	h ₁	h ₂	h ₃	l ₁	w ₁	Number of holes	Weight g
12037.W0015	4"/6"	Vice jaw set	With holes	2 off	4 pc 12036.W0175	98,55	63,5	47,75	23,87	17,47	150	25,4	7	2460
12037.W0020	6"	Vice jaw set	With holes	2 off	4 pc 12036.W0175	98,55		47,75	23,87		200	25,4	9	3470
12037.W0115		Vice jaw set	W/o holes	2 off	4 pc 12036.W0175			47,75			150	25,4	7	2780
12037.W0120		Vice jaw set	W/o holes	2 off	4 pc 12036.W0175			47,75			200	25,4	9	3640



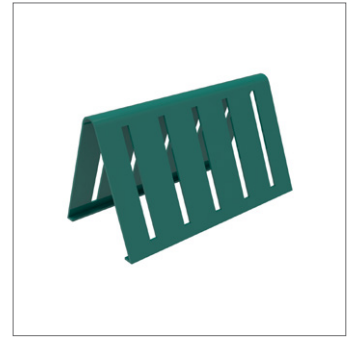
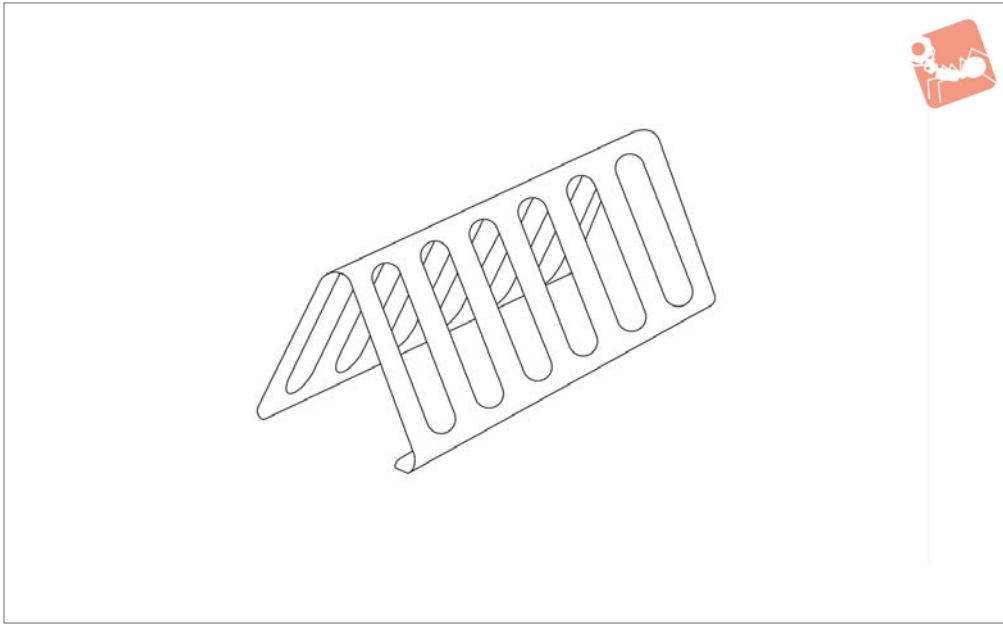


Holder Racks For Parallels - AccuSnap

for use with AccuSnap parallels & angles



Vice Clamping



19838

VICE CLAMPING

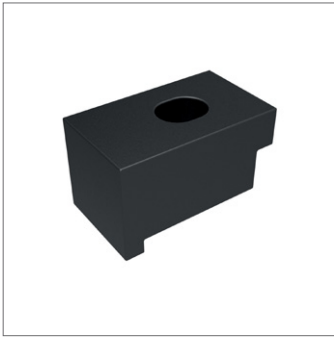
Material

Steel.

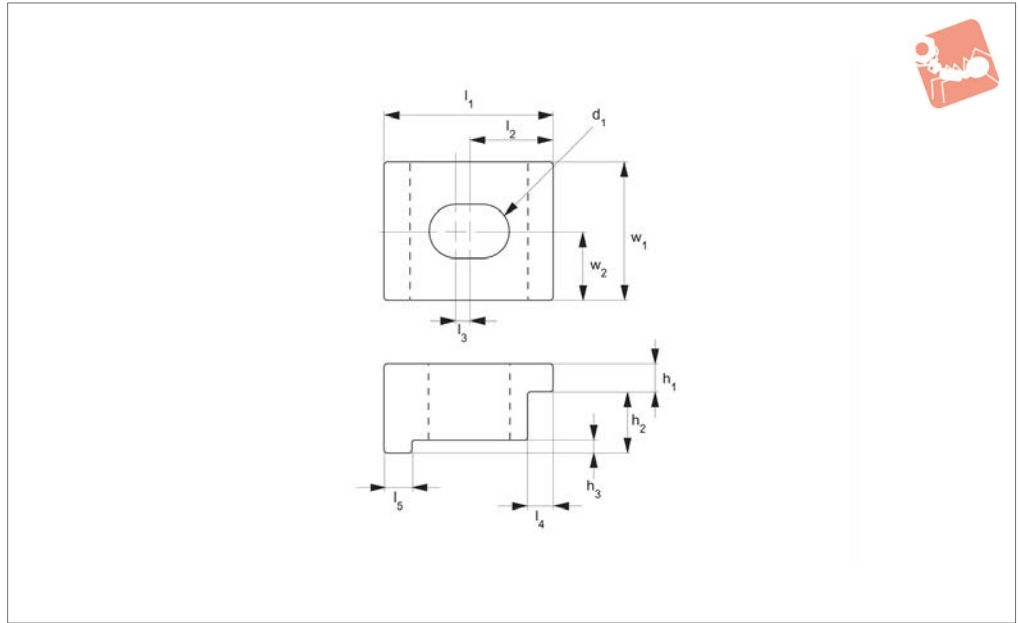
Technical Notes

Provides convenient storage of parallel sets.

Order No.	For vice size	Suitable for parallel kits
19838.W0040	4"	19814.W0140
19838.W0041	4"	19814.W0040
19838.W0060	6"	19814.W0160
19838.W0061	6"	19814.W0060



19896



VICE CLAMPING

Material

Steel (1018), case hardened, black oxide finish.

table. Fits into side groove on side of clamp - suitable for most industry standard vices.

Technical Notes

Used to secure vice to fixture of machine

Important Notes

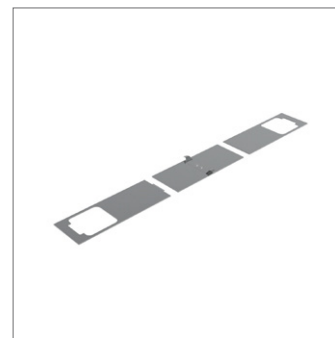
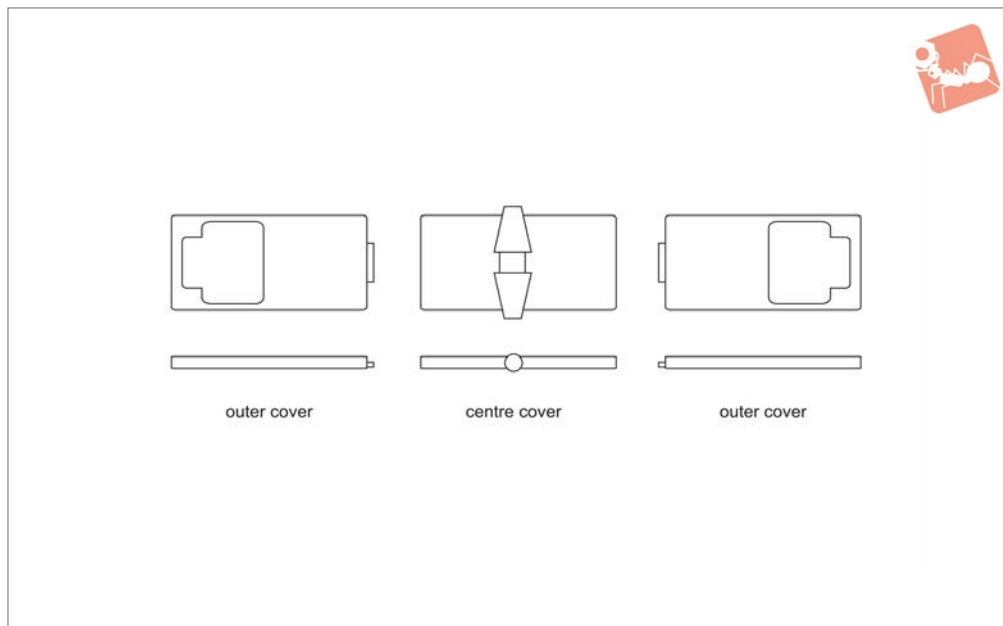
All dimensions are in inches.

Order No.	For thread d_1	For vice size	h_1	h_2	h_3	l_1	l_2	l_3	l_4	l_5	w_1	w_2
19896.W0040	3/8	4"	0.25	0.50	0.13	1.50	0.63	0.13	0.19	0.25	1.25	0.625
19896.W0041	1/2	4"	0.25	0.50	0.13	1.50	0.63	0.13	0.19	0.25	1.25	0.625
19896.W0060	3/8	6"	0.50	0.75	0.19	2.12	0.85	0.13	0.25	0.25	1.25	0.625
19896.W0061	1/2	6"	0.50	0.75	0.19	2.12	0.85	0.13	0.25	0.25	1.25	0.625
19896.W0062	3/8	6"	0.50	0.75	0.19	2.12	0.85	0.13	0.25	0.25	1.25	0.625



Chip Shield Covers for double and eight station vices

Vice Clamping



19899

VICE CLAMPING

Technical Notes

Fits double station and eight station vices.
Shield covers protects vice screw and

mechanism from swarf and other debris.

Important Notes

All dimensions are in inches.

Order No.	For vice size	Set contents
19899.W0040	4"	2 x Outer, 1 x Centre
19899.W0060	6"	2 x Outer, 1 x Centre
19899.W0080	8"	2 x Outer, 1 x Centre