

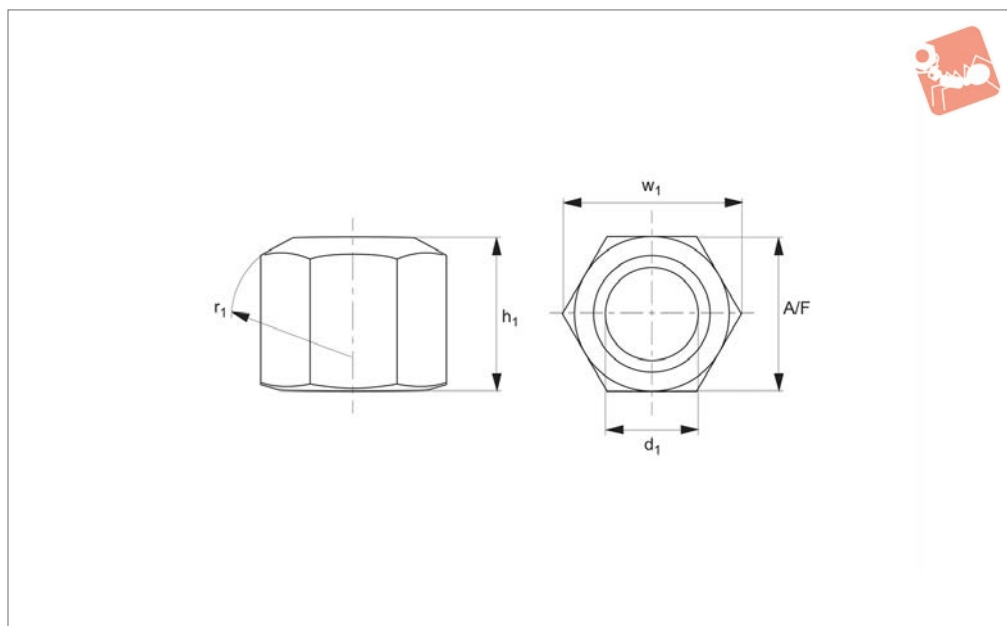


Fixture Nuts

strength class 10



Nuts



24300

NUTS

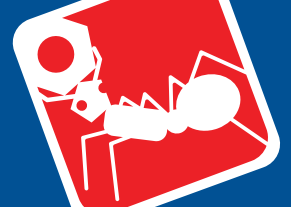
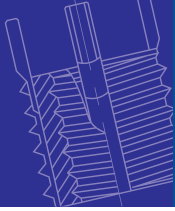
Material

Steel, heat treated.
Tensile strength class 10.

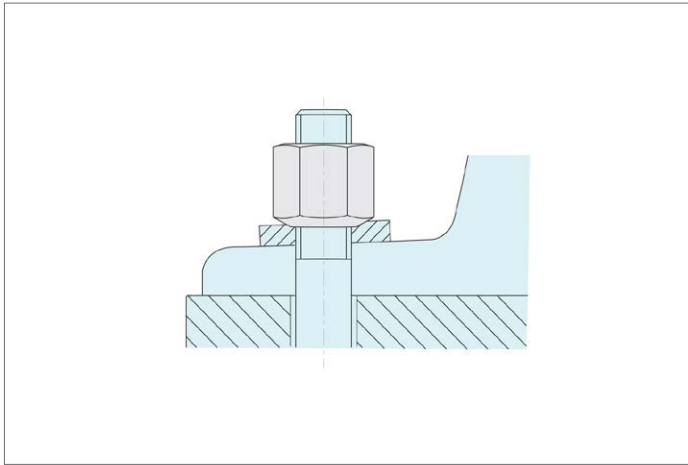
Technical Notes

Produced to DIN 6330B.

Order No.	d ₁	w ₁	h ₁ = 1,5 x d ₁	r ₁	A/F	Weight g
24300.W0106	M 6	11.1	9	9	10	5
24300.W0108	M 8	14.4	12	12	13	9
24300.W0110	M10	17.8	15	15	16	14
24300.W0111	M10	18.9	15	15	17	20
24300.W0112	M12	20.0	18	17	18	20
24300.W0113	M12	21.1	18	17	19	28
24300.W0114	M14	23.4	21	20	21	34
24300.W0115	M14	24.5	21	20	22	45
24300.W0116	M16	26.8	24	22	24	58
24300.W0118	M18	30.1	27	24	27	83
24300.W0120	M20	33.5	30	27	30	110
24300.W0122	M22	37.7	33	30	34	185
24300.W0123	M22	35.7	33	30	32	130
24300.W0124	M24	40.0	36	32	36	195
24300.W0127	M27	45.6	40	36	41	280
24300.W0130	M30	51.3	45	41	46	405
24300.W0136	M36	61.3	54	50	55	715
24300.W0142	M42	72.6	63	58	65	1170
24300.W0148	M48	83.9	72	67	75	1800



NUTS



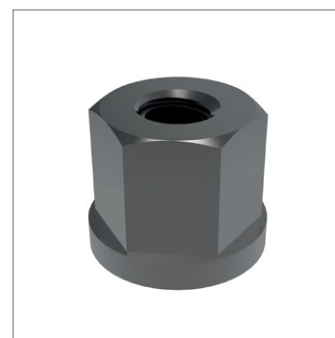
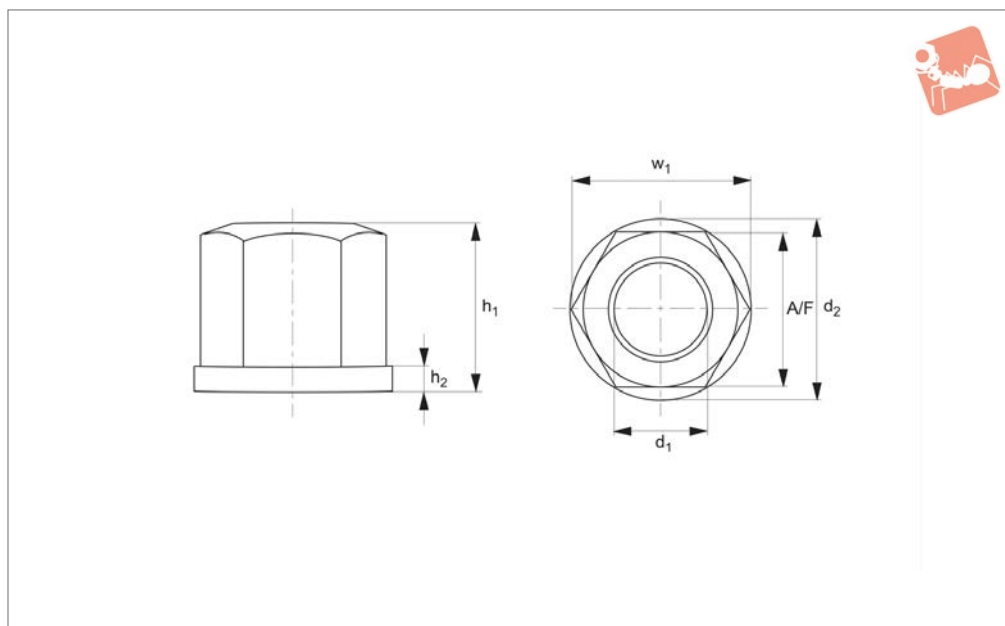


Collar Nuts

strength class 10



Nuts



24400

NUTS

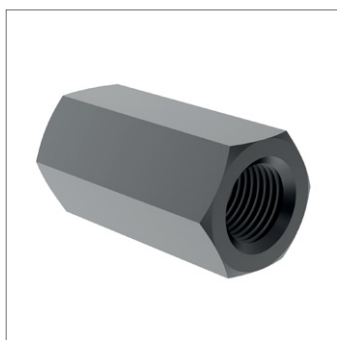
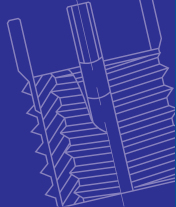
Material

Steel, heat treated. Tensile strength class 10. Turned and milled.

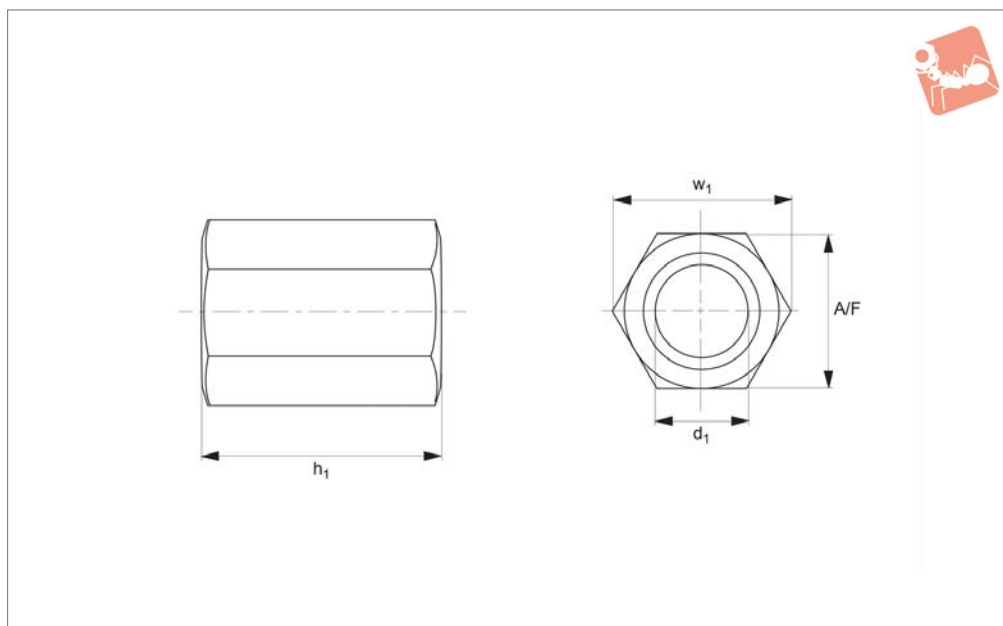
Technical Notes

Produced to DIN 6331.

Order No.	d_1	w_1	$h_1 = 1,5 \times d_1$	d_2	h_2	A/F	Weight g
24400.W0106	M 6	11.1	9	14	3.0	10	6
24400.W0108	M 8	14.4	12	18	3.5	13	12
24400.W0110	M10	17.8	15	22	4.0	16	21
24400.W0111	M10	18.9	15	22	4.0	17	25
24400.W0112	M12	20.0	18	25	4.0	18	30
24400.W0113	M12	21.1	18	25	4.0	19	36
24400.W0114	M14	23.4	21	28	4.5	21	43
24400.W0115	M14	24.5	21	28	4.5	22	51
24400.W0116	M16	26.8	24	31	5.0	24	70
24400.W0118	M18	30.1	27	34	5.0	27	95
24400.W0120	M20	33.5	30	37	6.0	30	130
24400.W0122	M22	37.7	33	40	6.0	34	200
24400.W0123	M22	35.7	33	40	6.0	32	160
24400.W0124	M24	40.0	36	45	6.0	36	230
24400.W0127	M27	45.6	40	50	8.0	41	320
24400.W0130	M30	51.3	45	58	8.0	46	470
24400.W0136	M36	61.3	54	68	10.0	55	800
24400.W0142	M42	72.6	63	80	12.0	65	1340
24400.W0148	M48	83.9	72	92	14.0	75	2040



24600



Material

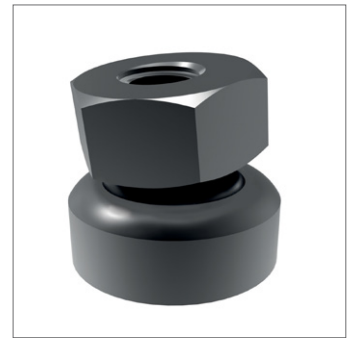
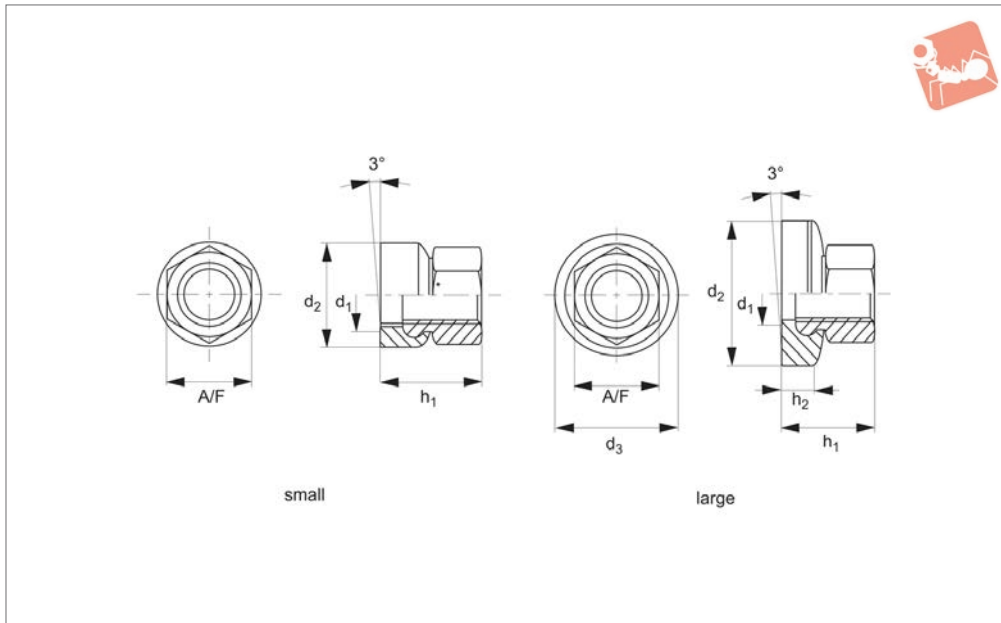
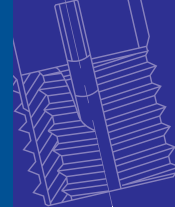
Steel heat-treated.
Tensile strength class 10.

Technical Notes

Produced to DIN 6334.

Used for joining T-bolts and studs together. For safety the T-bolts/studs should be screwed half the length of the coupling nut either side. Minimum screwed in thread length should be 1 x diameter.

Order No.	d_1	w_1	$h_1 = 3 \times d_1$	A/F	Weight g
24600.W0106	M 6	11.1	18	10	8
24600.W0108	M 8	14.4	24	13	19
24600.W0110	M10	17.8	30	16	30
24600.W0112	M12	20.0	36	18	48
24600.W0114	M14	23.4	42	21	73
24600.W0116	M16	26.8	48	24	120
24600.W0118	M18	30.1	54	27	170
24600.W0120	M20	33.5	60	30	240
24600.W0122	M22	37.7	66	34	390
24600.W0124	M24	40.0	72	36	400
24600.W0127	M27	45.6	81	41	600
24600.W0130	M30	51.3	90	46	850
24600.W0136	M36	61.3	108	55	1470
24600.W0142	M42	72.6	126	65	2340
24600.W0148	M48	83.9	144	75	3600



24620

NUTS

Material

Steel, heat-treated steel, tempered, blackened.

Order No.	Type	d ₁	h ₁	d ₂	d ₃	h ₂	A/F	Weight g
24620.W0508	Small	M 8	14.0	17	-	-	13	13
24620.W0510	Small	M10	17.5	21	-	-	16	24
24620.W0512	Small	M12	21.5	24	-	-	18	38
24620.W0516	Small	M16	28.0	30	-	-	24	75
24620.W0520	Small	M20	35.0	36	-	-	30	143
24620.W0524	Small	M24	42.5	44	-	-	36	261
24620.W0530	Small	M30	56.0	55	-	-	46	557
24620.W0608	Large	M 8	14.0	24	17.8	4.0	13	13
24620.W0610	Large	M10	17.5	30	21.2	5.5	16	16
24620.W0612	Large	M12	21.5	36	25.2	7.0	18	18
24620.W0616	Large	M16	28.0	44	30.9	8.0	24	24
24620.W0620	Large	M20	35.0	50	39.9	9.5	30	30
24620.W0624	Large	M24	42.5	60	49.6	11.0	36	36
24620.W0630	Large	M30	56.0	68	61.3	14.0	40	40

