

10650

ADJUSTABLE VERTICAL CLAMPS

Material

Aluminium body, steel arm and screw.
Aluminium clamping pad.

Technical Notes

Can be used with our stackable riser elements to increase the clamping height

if required (see part 10651).

Supplied with clamping key (10651. W1140). Clamping screws for mounting to machine bed etc. supplied separately, see part no. 10654.

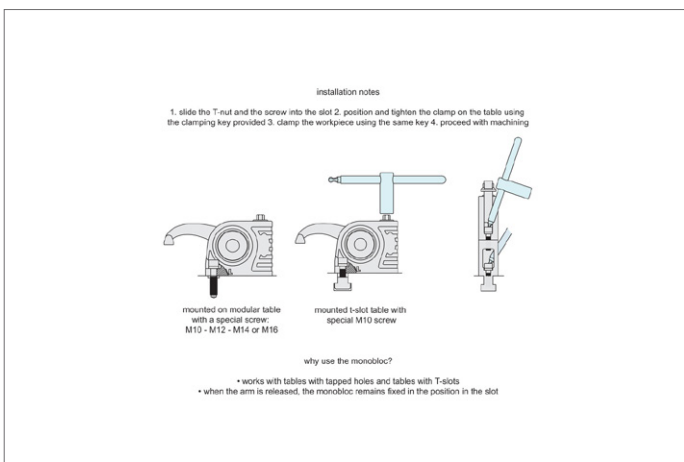
Tips

Can be used on T-slot tables or tapped holes.

Important Notes

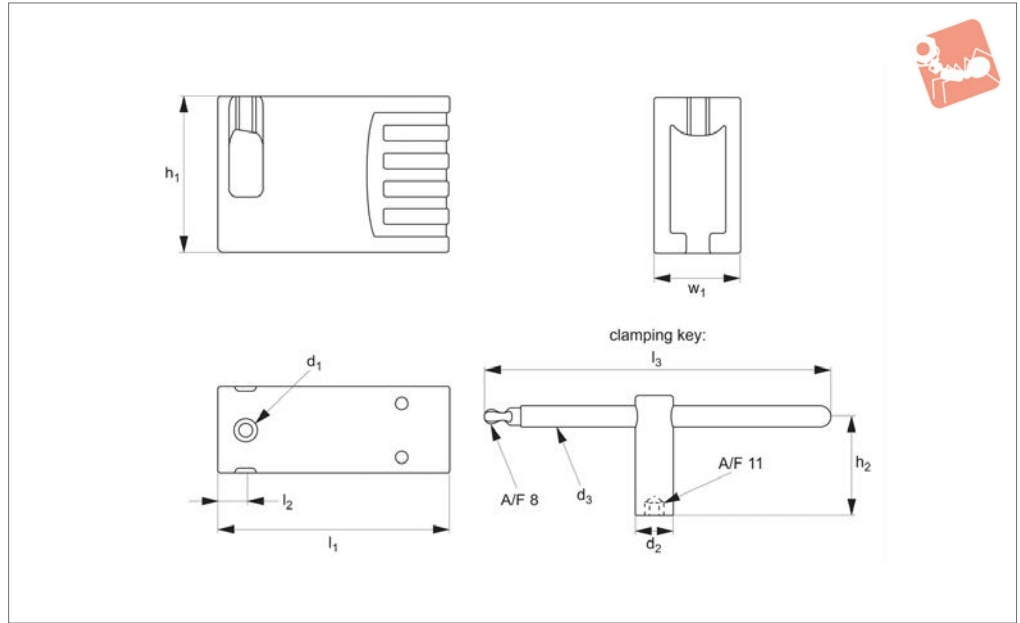
Available as a box set, see part 10653.

Order No.	Arm type	Clamp reach l_1	Clamping force kN max.	Clamping height h_1	h_2	h_3	l_2	l_3	r_1	w_1	w_2	A/F	Torque to Nm max.
10650.W0020	Short	33	16	0 to 80	89	49	108	12.5	r 77	40	16	11	80
10650.W0030	Long	61	12	-8 to 102	89	49	108	12.5	r105	40	16	11	80
10650.W0035	Extra Long	132	8	-43 to 155	89	49	108	12.5	r176	40	16	11	80





10651



Material

Spacer elements: aluminium. Supplied with clamping screw.
Clamping key: red plastic coated or nickel

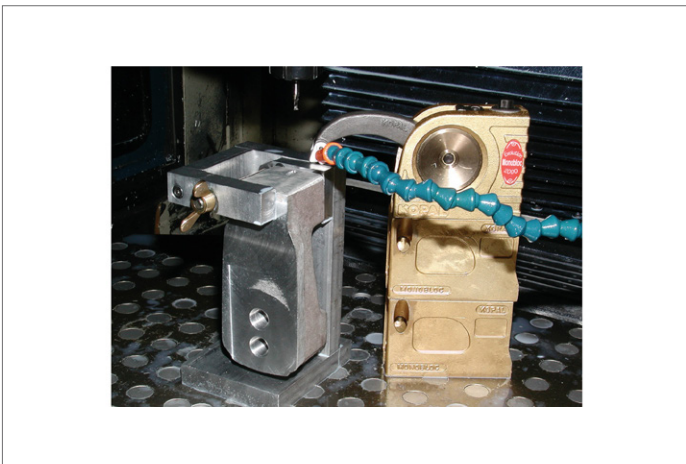
plated.

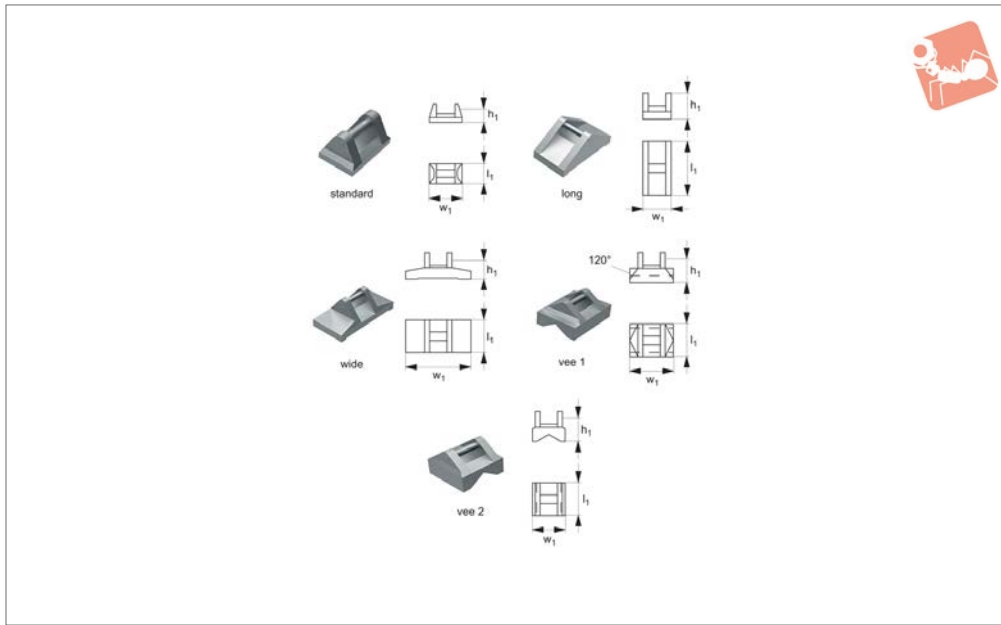
Technical Notes

Can be used to increase the clamping

height of most of our vertical clamping systems (10650, 10660).

Order No.	Type	h_1	h_2	d_1	d_2	d_3	l_1	l_2	l_3	w_1
10651.W0050	Spacer element	74	-	M10	-	-	108	12.5	-	40
10651.W0160	Key - coated	-	58	-	24	14	-	-	200	-
10651.W0325	Key - plated	-	88	-	20	10	-	-	200	-





10652

ADJUSTABLE VERTICAL CLAMPS

Material
Aluminium.

shapes. For use with clamps 10650, 10655, 10660.

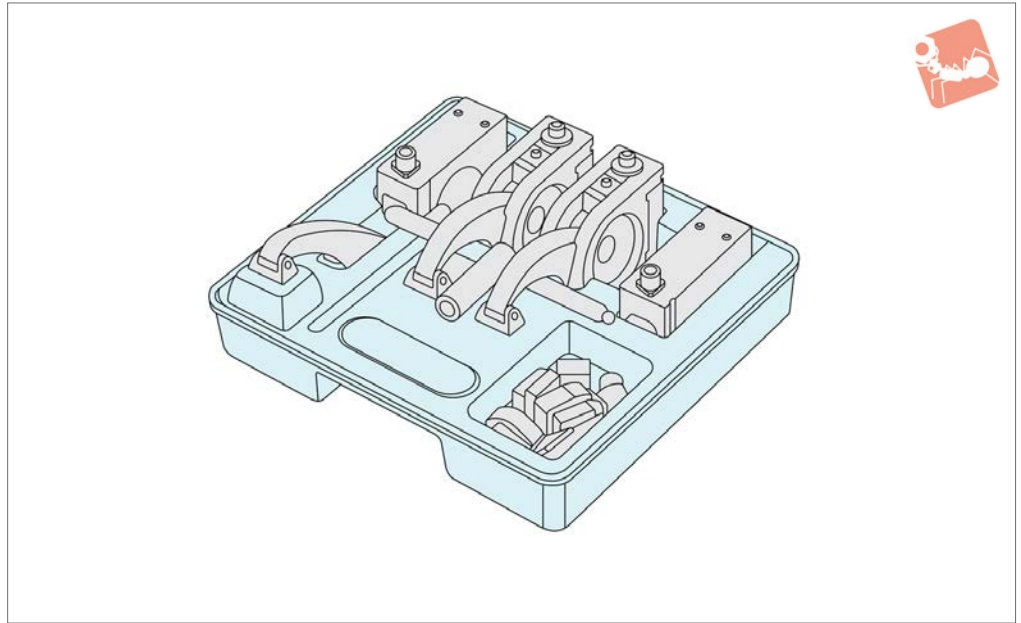
Technical Notes

Clamping pads to suit differing workpiece

Order No.	Pad type	h_1	l_1	w_1
10652.W0565	Standard	11	18	30
10652.W0802	Long	17	50	26
10652.W0803	Wide	18	30	60
10652.W0804	Vee 1	14	30	40
10652.W0805	Vee 2	14	30	30
10652.W1150	Set of 4 (Long, Wide, Vee 1, Vee 2)	-	-	-



10653



Technical Notes

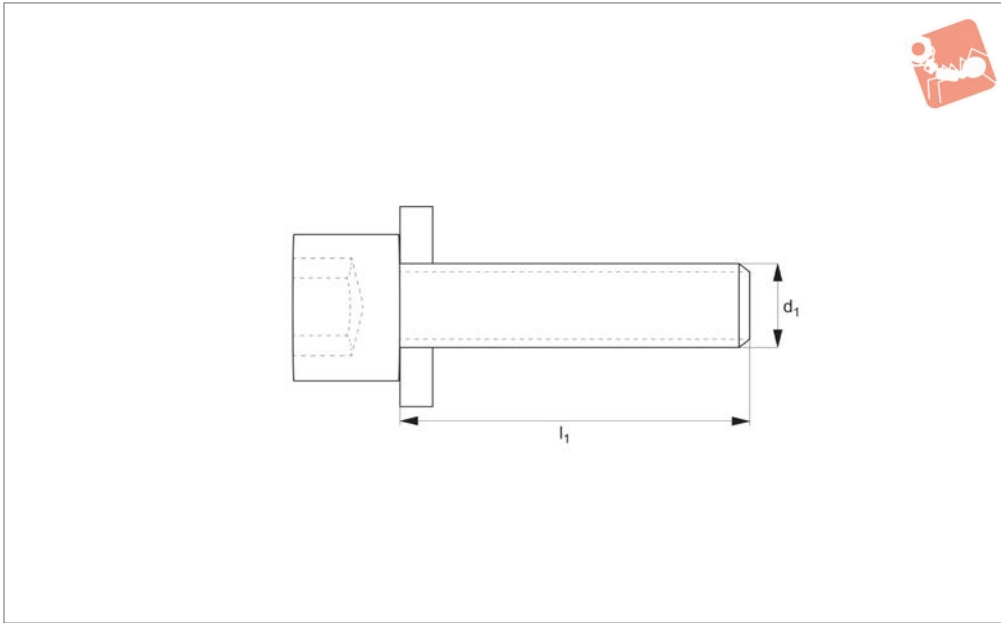
Comprises of two monobloc clamps (short 10650.W0020 and long 10650.W0030), two spacer elements (2 x 10651.W0050), one clamping key (10651.W0160 or 10651.

W0325), one extra long arm (available with clamp in 10650.W0035), 4xM10 screws (10654.W0080 and 10654.W0085) and 6xM10 T-nuts (with spring) for 14, 16 and 18mm slots.

Tips

Clamp heights shown with the use of the riser blocks.

Order No.	Description	Clamp reach	Clamping force kN max.	Clamping height min. max.
10653.W0100	Long Arm Set	61	12	-8 to 176
10653.W0110	Short Arm Set	33	16	0 to 154



10654

ADJUSTABLE VERTICAL CLAMPS

Material

Steel.

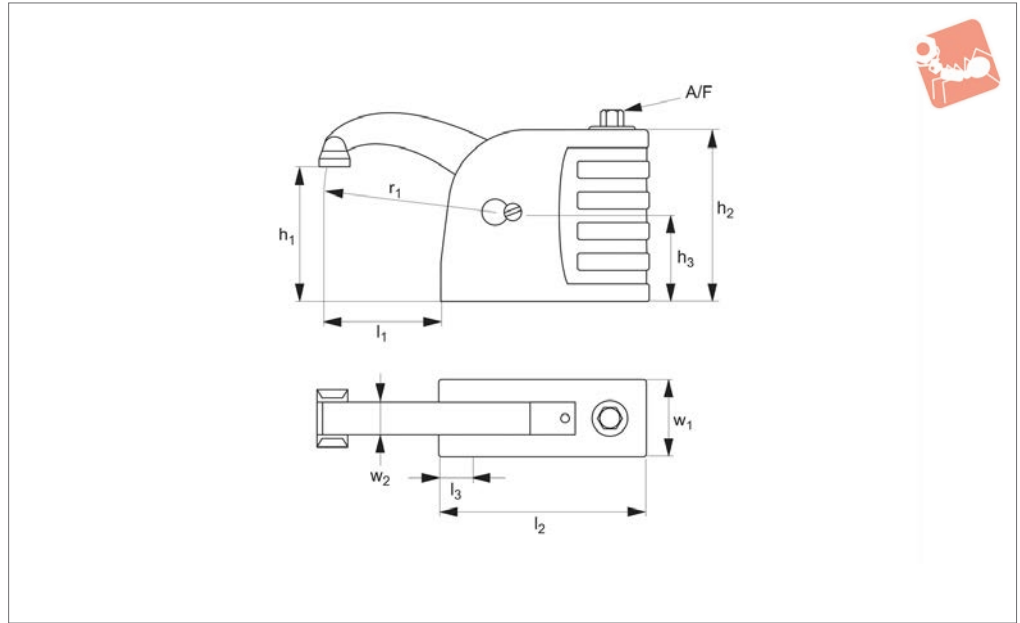
Technical Notes

Please order T-nuts separately, see part no. 24000.

Order No.	Type	For thread	For T-slot	$d_1 \times l_1$
10654.W0080	For T-slots	-	12 & 14	M10x35
10654.W0085	For T-slots	-	16 & 18	M10x40
10654.W0090	For T-slots	-	20 & 22	M10x45
10654.W0065	For threads	M12	-	M12x40
10654.W0070	For threads	M14	-	M14x45
10654.W0075	For threads	M16	-	M16x45



10655



Material

Aluminium body, steel arm and screw.
Aluminium thrust product.

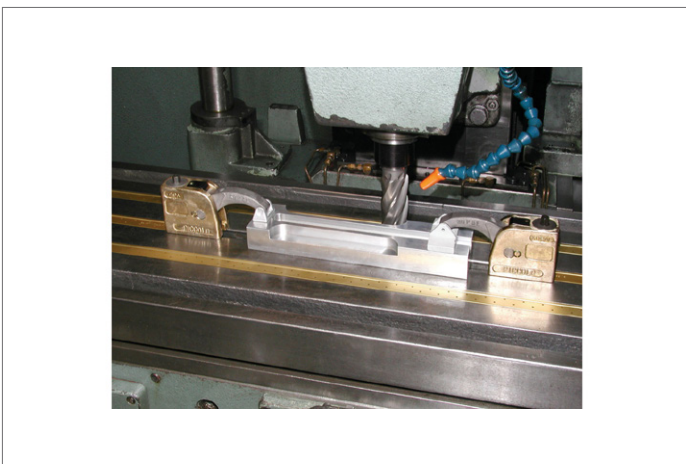
ping force. Supplied with key and clamping screw (M8 x 30mm) for mounting to machine bed.

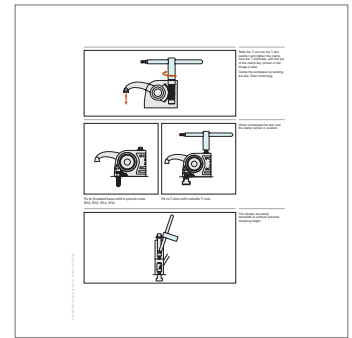
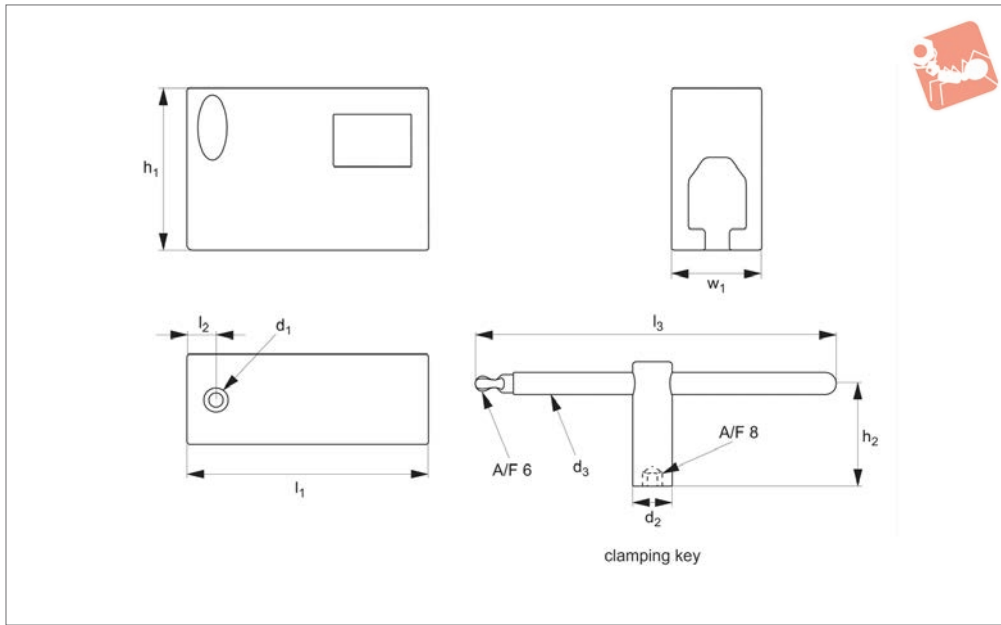
Technical Notes

Small clamping footprint with high clam-

For spacer elements see part no. 10656.

Order No.	Arm type	Clamp reach l_1	Clamping force kN max.	Clamping height h_1 min. max.	h_2	h_3	l_2	l_3	r_1	w_1	w_2	A/F	Torque to Nm max.
10655.W0020	Short	54	6.5	-15 to 58	62.5	31	73	11	r 76	32	16	8	30
10655.W0025	Long	100	4.2	-40 to 90	62.5	31	73	11	r122	32	16	8	30





10656

ADJUSTABLE VERTICAL CLAMPS

Material

Aluminium body, supplied with clamping screw.

Clamping body key: nickel plated steel.

Technical Notes

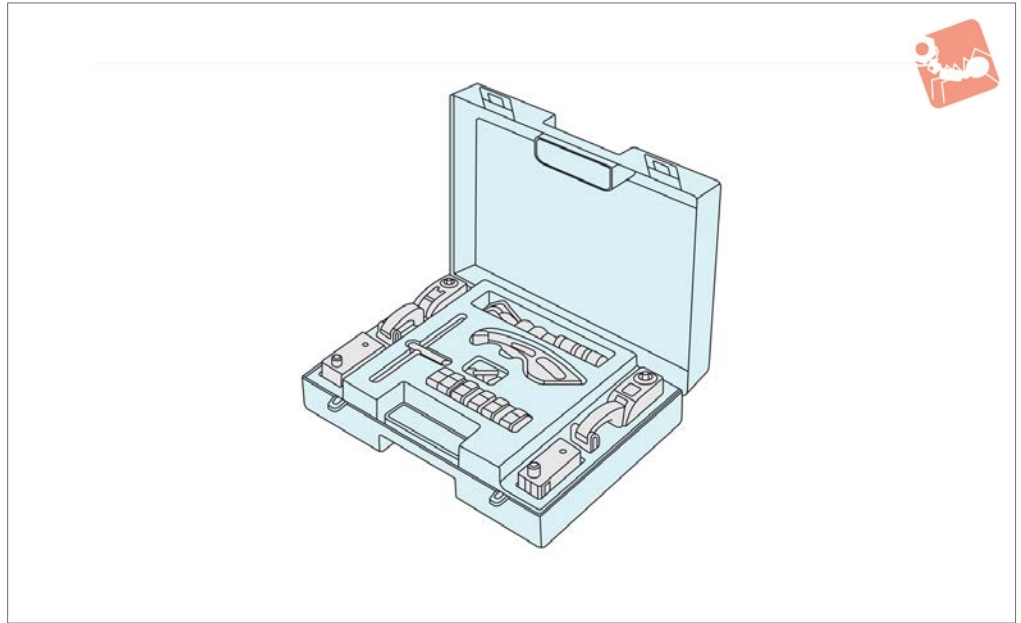
Can be used to increase the clamping

height of our vertical clamping systems 10655.

Order No.	Type	h_1	h_2	d_1	d_2	d_3	l_1	l_2	l_3	w_1
10656.W0030	Spacer	60	-	M8	-	-	73	11	-	32
10656.W0180	Key	-	38	-	16	7	-	-	140	-



10657



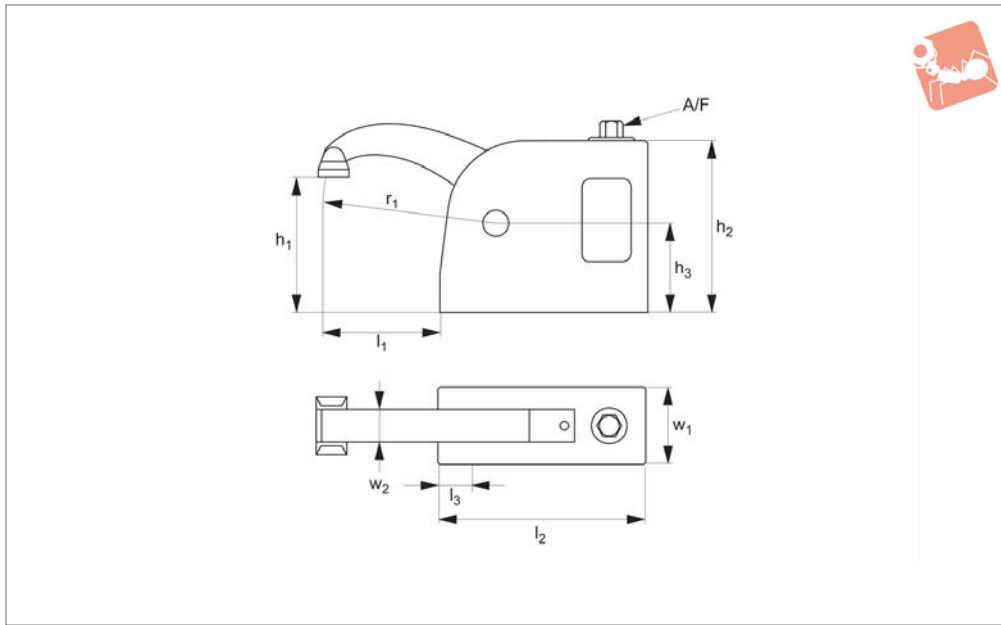
Technical Notes

Comprises of two piccolo clamping elements (short 10655.W0020 and long

10655.W0025), two spacer elements (2 x 10656.W0030), one clamping key (10656.W0180), one extra long arm, four M10

screws and six M10 T-nuts (with spring) for 14, 16 and 18mm slots.

Order No.	Description	Clamp reach	Clamping force kN max.	Clamping height min. max.
10657.W0100	Piccolo Clamp Set	54	6.5	0 to 118



10658

ADJUSTABLE VERTICAL CLAMPS

Material

Aluminium body, steel arm and screw.
Aluminium clamp thrust product.

Technical Notes

The only clamp specially designed for

electro-discharge (EDM) machines. The body has a large opening to ensure free flow of fluid.

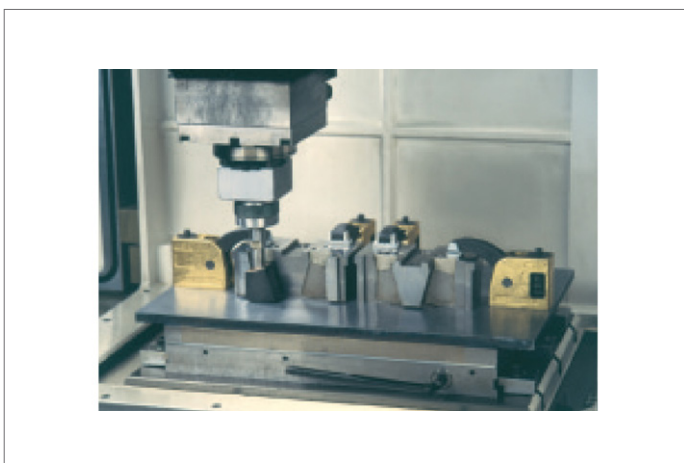
These clamps are easily disassembled without tools, cleaned, greased and re-

assembled.

Important Notes

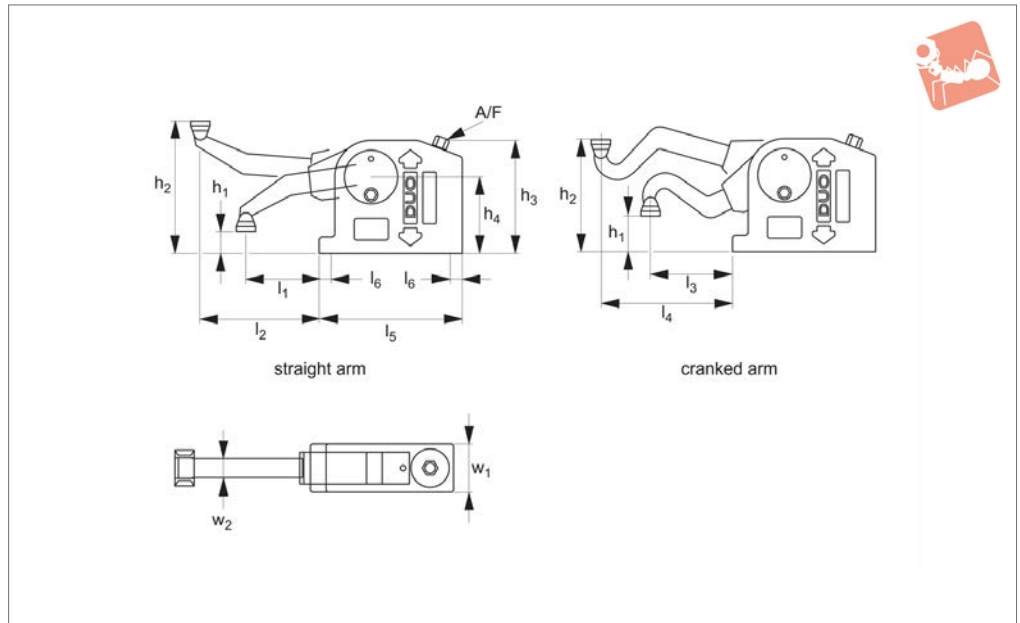
Supplied with clamping key and clamping screw (M8 x 30mm) for mounting to machine bed.

Order No.	Arm type	Clamp reach l_1	Clamping force kN max.	Clamping height min. max.	h_1	h_2	h_3	l_2	l_3	r_1	w_1	w_2	A/F	Torque to Nm max.
10658.W0022	Short	54	6	-15 to 58	62.5	31	73	11	r 76	32	16	8	80	
10658.W0023	Long	100	4	-40 to 90	62.5	31	73	11	r122	32	16	8	30	





10660



Material

Aluminium body, steel arm and screw.
Aluminium clamp thrust product.

Technical Notes

Fully adjustable clamping range that can be used with our standard stackable riser

elements (see part no. 10651).

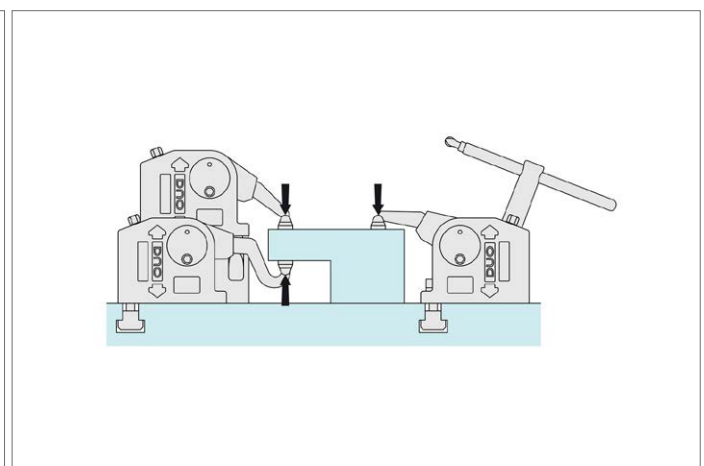
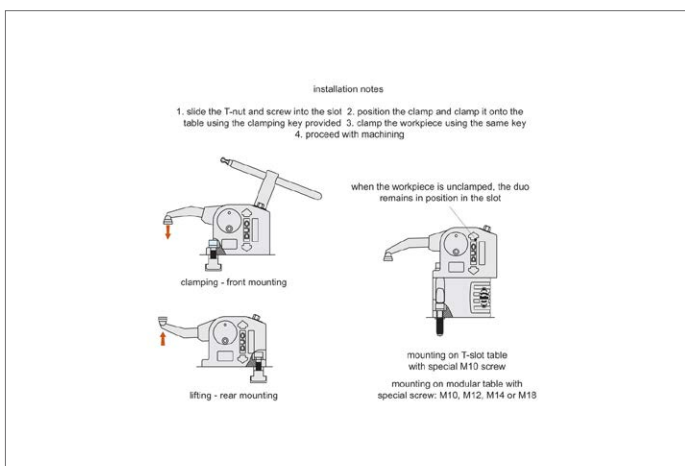
Has both clamping and lifting capability, aided by two different interchangeable arms.

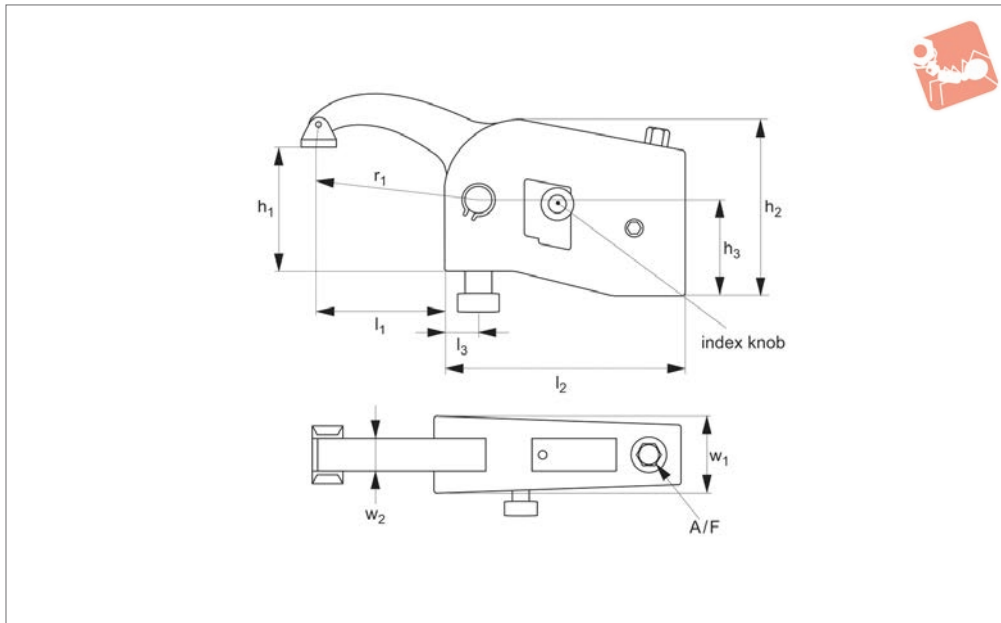
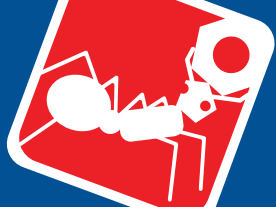
Supplied with operating key.

Tips

Two different clamping arm shapes provided: straight and cranked. See table below for clamping and lifting heights of each arm.

Order No.	Clamp reach l_1 - l_2	Clamp reach l_3 - l_4	Clamping force kN max.	Clamping height h_1 min. max.	Lifting height h_2 min. max.	h_1 min. max.	h_2 min. max.	h_3	h_3 min. max.	h_4 min. max.	l_5	l_6	w_1	w_2	Clamping arm	
10660.W0020	46-88	48-91	11	0-129	4-142	0-80	52-142	95	38-125	65	4-94	120	10	40	14	Straight





10661

ADJUSTABLE VERTICAL CLAMPS

Material

Aluminium body, steel arm and screw.
Aluminium thrust product.

Technical Notes

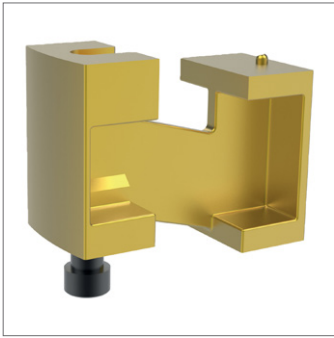
Quick and easy clamping of different clam-

ping heights. The index pin knob allows rapid adjustment to five set positions. Can be used with stackable riser elements to achieve required clamping heights. See part 10662.

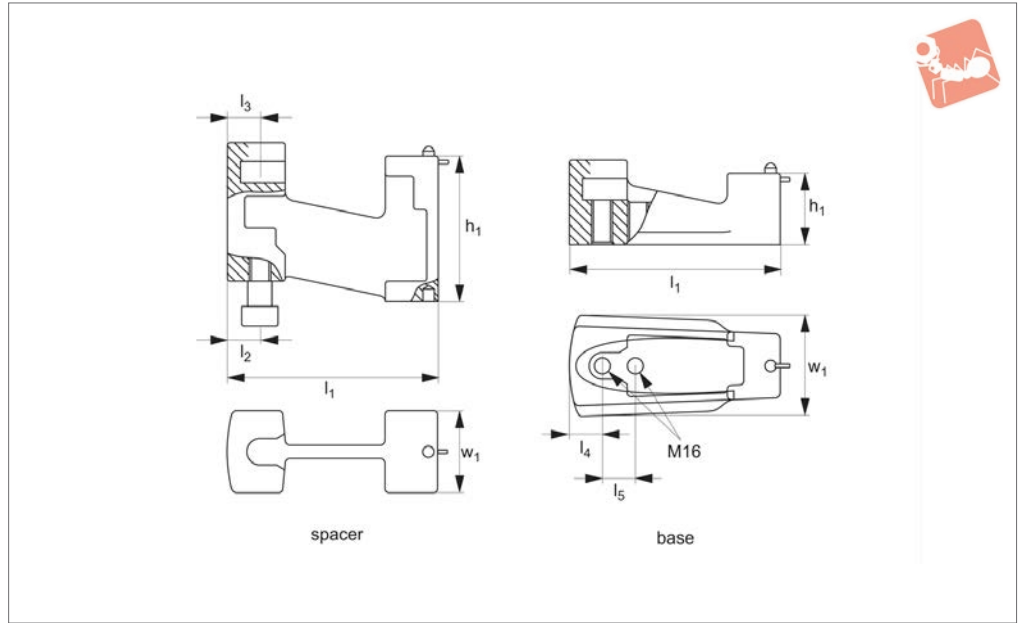
Supplied with clamping key.

Order No.	Description	Clamp reach l_1	Clamping force kN max.	Clamping height h_1 min. max.	h_2	h_3	l_2	l_3	r_1	w_1	w_2	A/F	Torque to Nm max.
10661.W0020	Short	50	40	12 to 80	105	60	162	25	r 75	60	30	11	70
10661.W0030	Standard	95	28	-12 to 100	105	60	162	25	r120	60	30	11	70
10661.W0035	Long	145	20	-18 to 135	105	60	162	25	r170	60	30	11	70
10661.W0038	Extra Long	245	14	-50 to 155	105	60	162	25	r270	60	30	11	70





10662



Material

Aluminium.

Technical Notes

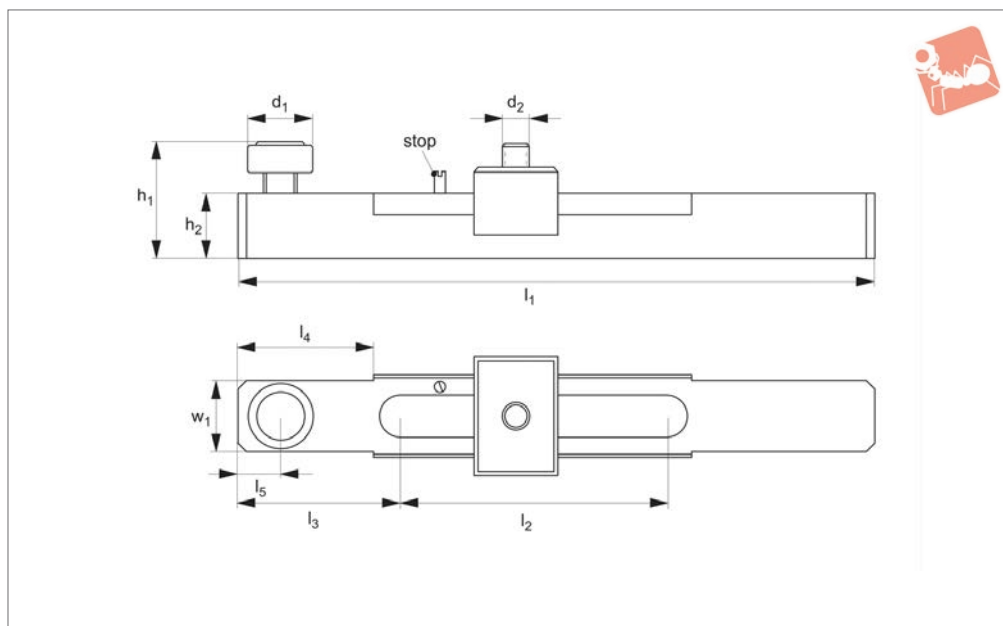
Base and spacer elements. For use with big block clamping system (part no. 10661).

Order No.	Type	h_1	l_1	l_2	l_3	l_4	l_5	w_1
10662.W0040	Base	55	162	-	-	25	25	75
10662.W0045	Spacer	55	162	25	25	-	-	75
10662.W0050	Spacer	110	162	25	25	-	-	75
10662.W0055	Spacer	330	162	25	25	-	-	75



Mounting Bar - Sliding for big block clamps no. 10661

Adjustable Vertical Clamps



10663

ADJUSTABLE VERTICAL CLAMPS

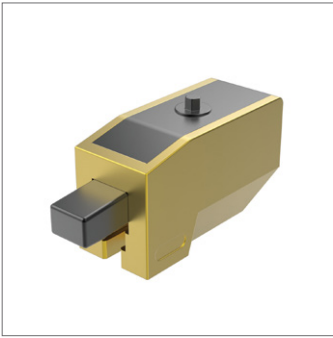
Material
Steel.

with big block clamping system (part no. 10661).

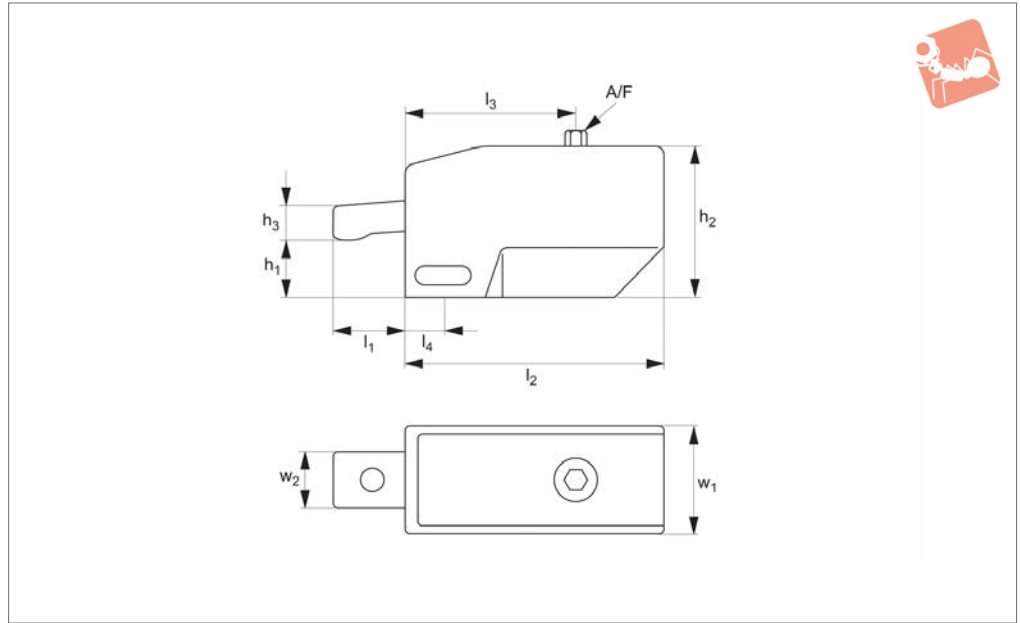
Technical Notes

Easy 152mm retraction of clamps. For use

Order No.	Type	h_1	h_2	d_1	d_2	l_1	l_2	l_3	l_4	l_5	Travel max.	w_1
10663.W0180	Base	61 - 85	28	28	M16	382	160	95	80	25	152	48



10670



Material

Body: aluminium.
Clamping piece: steel.

Technical Notes

Unique double action, moves forward and

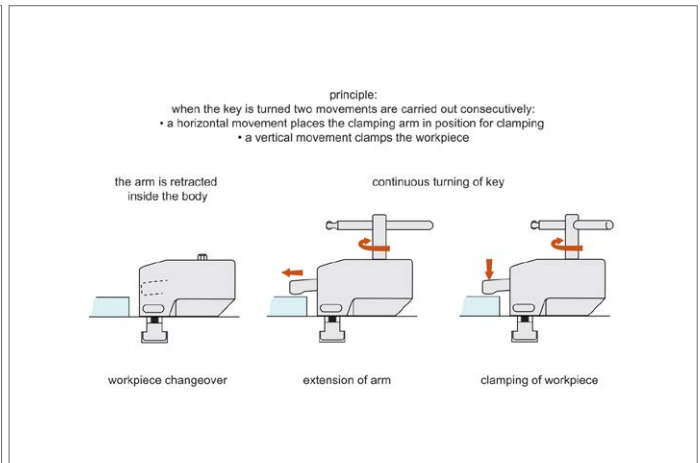
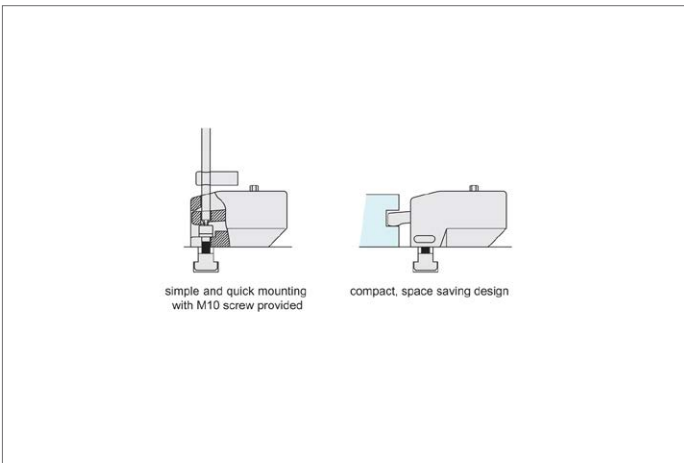
downward simply with a turn of the hex key.
Very compact, powerful and quick acting.

Tips

Clamping height can be easily adjusted by

using a spacer element or using our standard spacers (see part no. 10671).
Supplied with clamping key and clamping screw (M10 x 35mm).

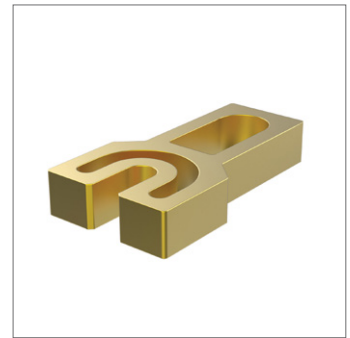
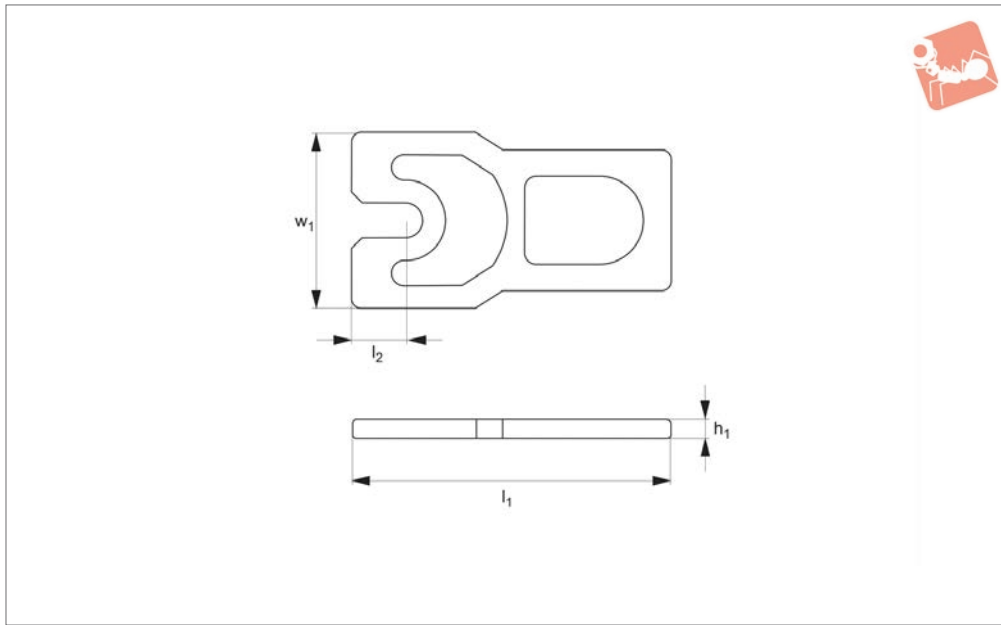
Order No.	Clamping force kN max.	Clamping height h_1 min. max.	Clamping reach l_1	h_2	h_3	l_2	l_3	l_4	w_1	w_2	A/F	Torque to Nm max.
10670.W0020	11	22 to 26	30	67	16.5	115	65	18	50	25	8	20





Spacer Elements for retractable arm clamp 10670

Adjustable Vertical Clamps



10671

ADJUSTABLE VERTICAL CLAMPS

Material

Aluminium.

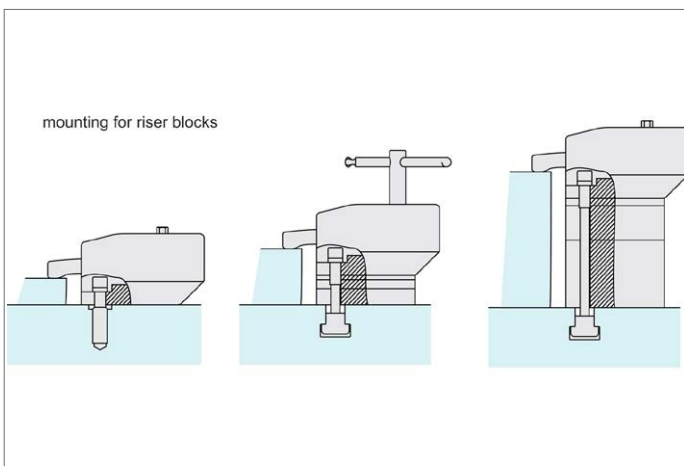
thicknesses. Suitable mounting screws also supplied. For use with clamp 10670.

Technical Notes

Supplied as set of six different spacer

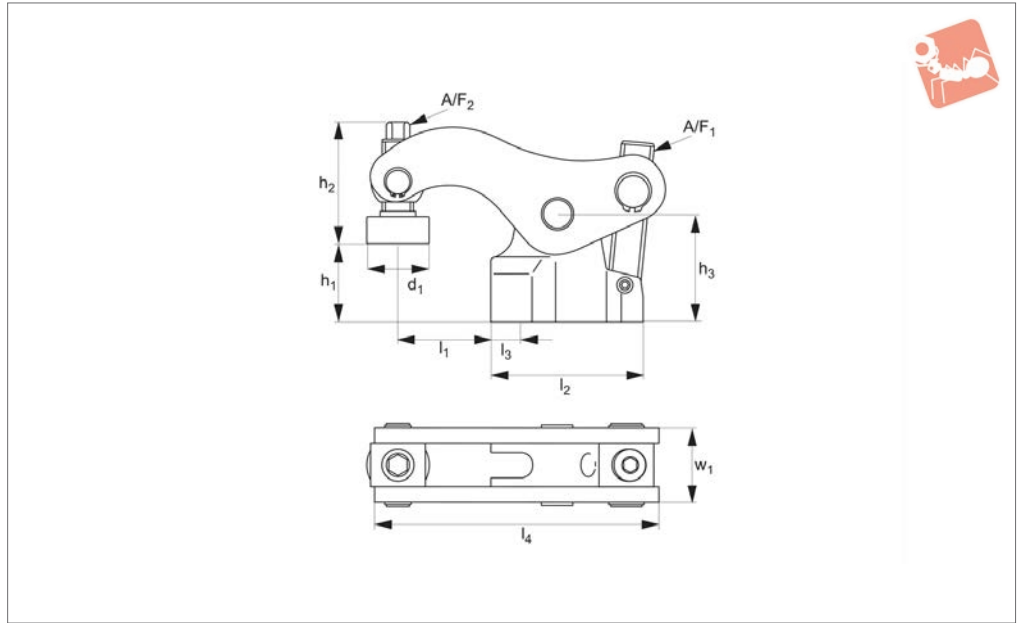
Can reach a maximum clamping height of 126mm.

Order No.	Type	h_1	l_1	l_2	w_1
10671.W0080	Set of 6	2, 4, 8, 16, 32 and 64	92	18	50





10675



Material

Steel body and clamping arm, with special clamping screw.

Supplied with clamping key, extension key and clamping screw (M14 x 40mm). Please order suitable T-nuts separately, see part no. 24000.

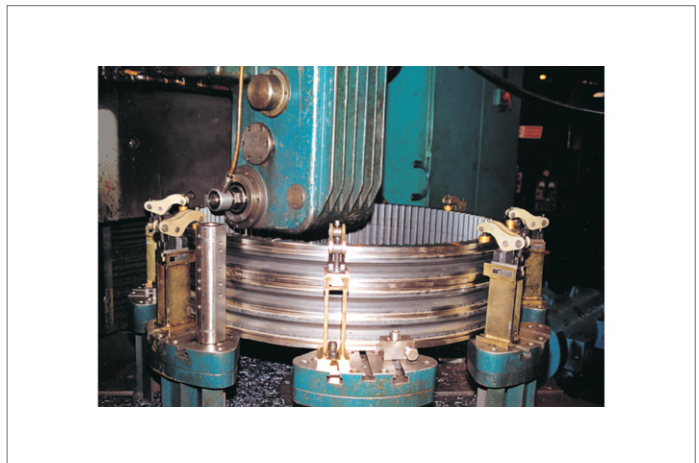
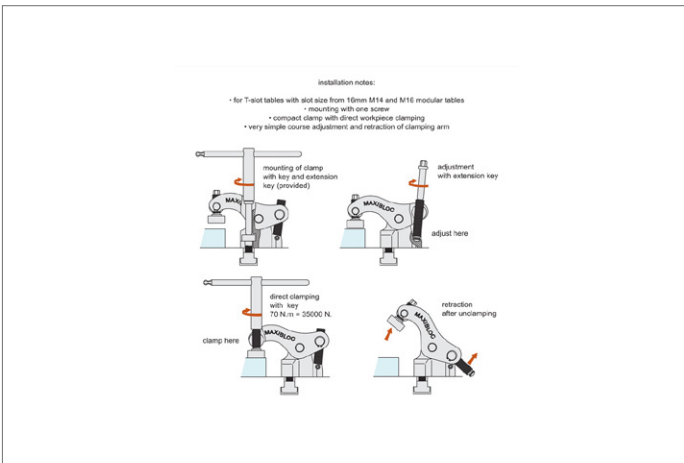
Tips

Clamping height can be raised using our stackable elements (part no. 10676).

Technical Notes

For very heavy machining. Arm retracts.

Order No.	Clamping force kN max.	Clamping height h_1 min. max.	Clamping reach l_1	h_2	h_3	d_1	l_2	l_3	l_4	w_1	A/F_1	A/F_2	Torque to Nm max.
10675.W0310	35	0 to 86	49	62.5	55	32	78	15	152	40	8	11	70

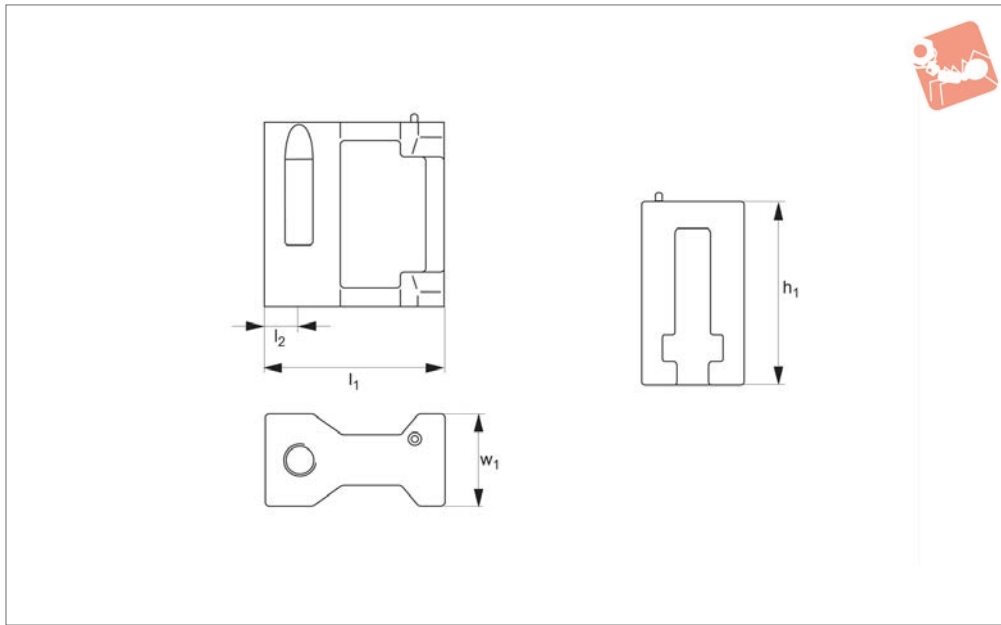




Maxi Bloc Spacer Elements

for Maxi Bloc clamps 10675

Adjustable Vertical Clamps



10676

ADJUSTABLE VERTICAL CLAMPS

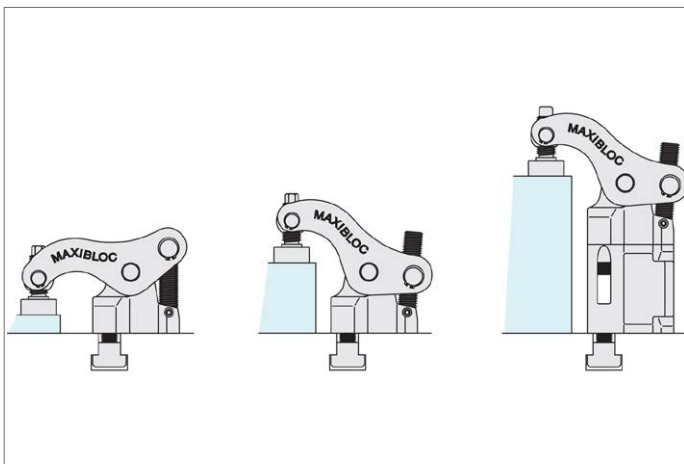
Material
Steel.

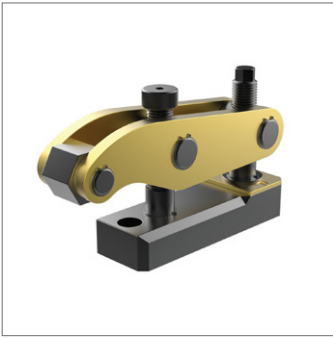
Technical Notes

Quick and easy clamping of different clam-

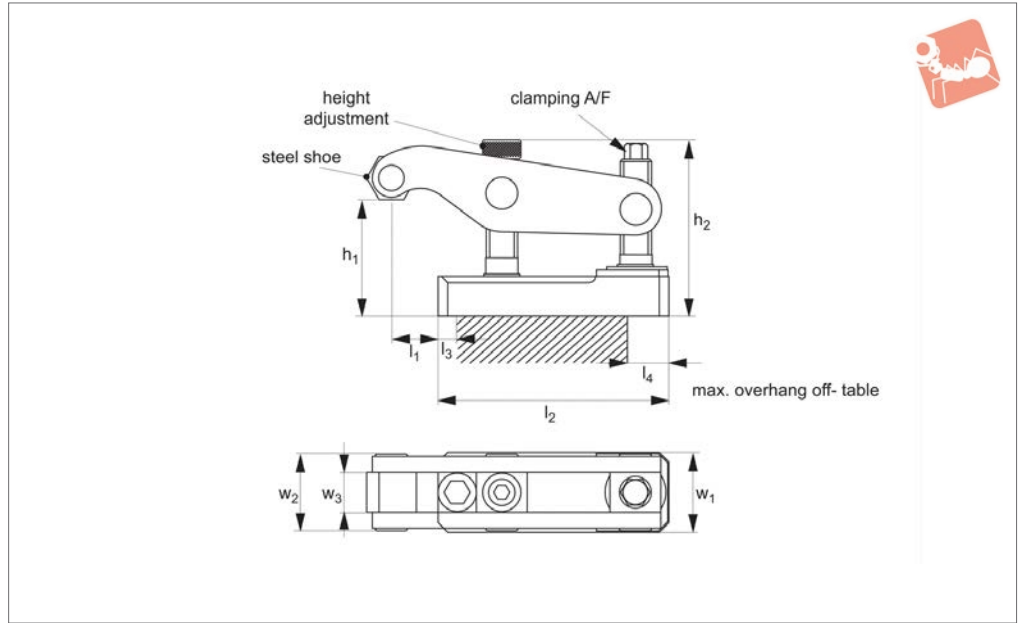
ping heights. For use with Maxi Bloc clamping system part no. 10675. Supplied with M14 mounting screw.

Order No.	Type	h_1	l_1	l_2	w_1
10676.W0320	Spacer	80	78	15	40





10678



Material

Steel, hardened, supplied with clamping key and high tensile strength (12.9) clamping screw.

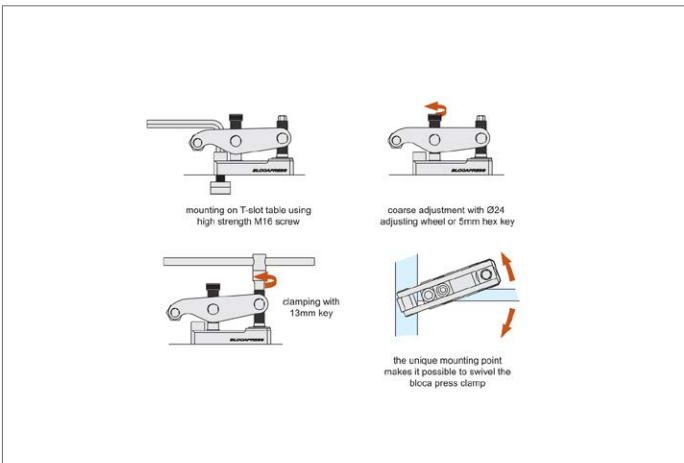
ping screw.

Five ton clamping force.

Technical Notes

Suitable for heavy duty presses.

Order No.	Clamping force kN max.	Clamping height h_1 min. max.	Clamping reach l_1	h_2	l_2	l_3	l_4 max.	w_1	w_2	w_3	A/F	Torque to Nm max.
10678.W0340	50	14 to 92	30	111	145	12	25	50	45	25	13	90





A Wide Range of Clamps to Match any Requirement

10650 All machining operations



16000
NEWTONS

10655 Light machining



6500
NEWTONS

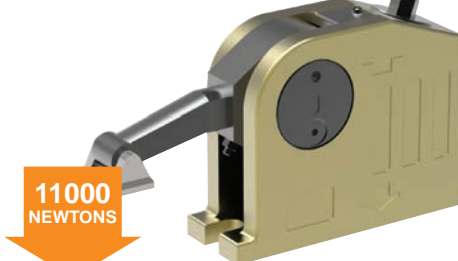
CLAMPING FORCE
UPTO
50000
NEWTONS

10658 Electrical discharge machining



6500
NEWTONS

10660 Clamping and lifting



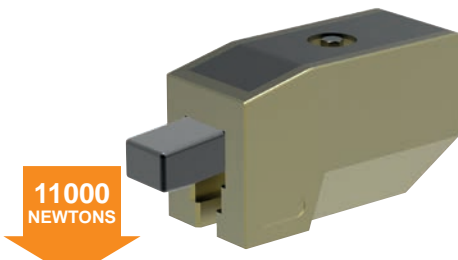
11000
NEWTONS

10661 Heavy machining



40000
NEWTONS

10670 Repetitive machining



11000
NEWTONS

10675 Heavy machining



35000
NEWTONS

10678 Press Tool Clamping



50000
NEWTONS

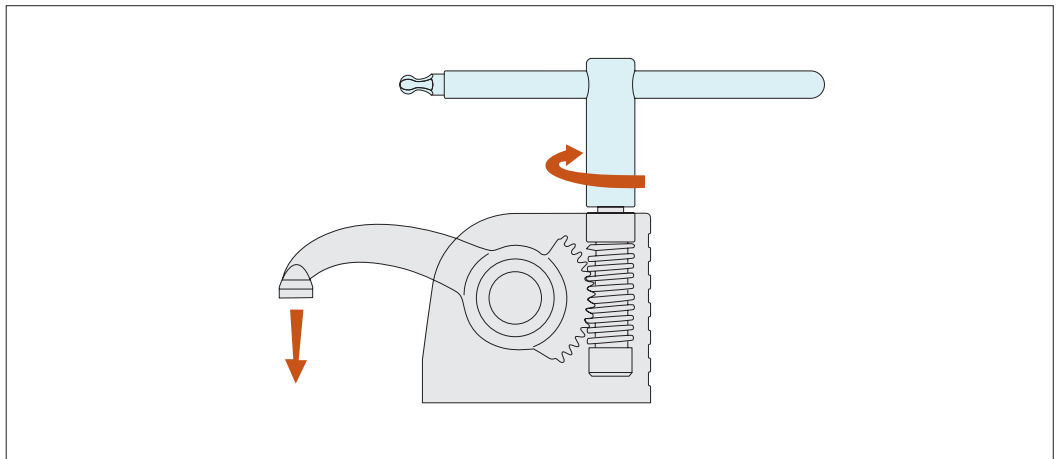
ADJUSTABLE VERTICAL CLAMPS

ov-W10650-A-T-W10678-A-T-over-clamping-vertical-pressure-rnh - Updated - 20-10-2022

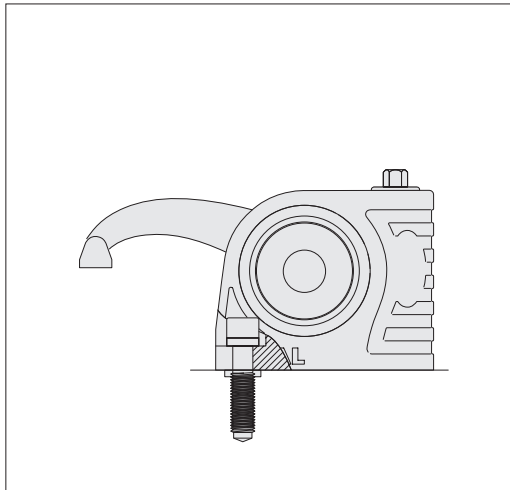


Slide the T-nut into the T-slot position and tighten the clamp onto the T-slot base, with the aid of the clamp key (shown in the image in blue).

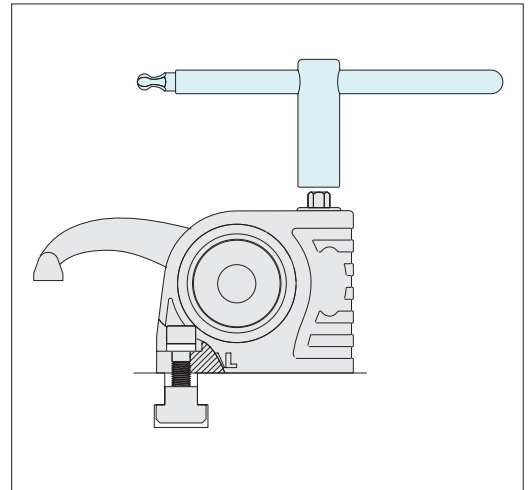
Clamp the workpiece by twisting the key. Start machining.



When unclamped the arm and the clamp remain in position



Fix to threaded bases with a special screw
M10, M12, M14, M16.



Fix to T-slots with suitable T-nuts.

The clamps are easily stackable to achieve required clamping height.

