

10600

ADJUSTABLE VERTICAL CLAMPS

Material

Steel, forged, tempered and burnished.

Technical Notes

Type one: clamp and T-bolt set.

Type two: clamp only.

h_1 - depends on the depth of the slot position and the position of the fixture nut.

Tips

Often used for clamping press tools.

Easy height adjustable clamp. No fitting

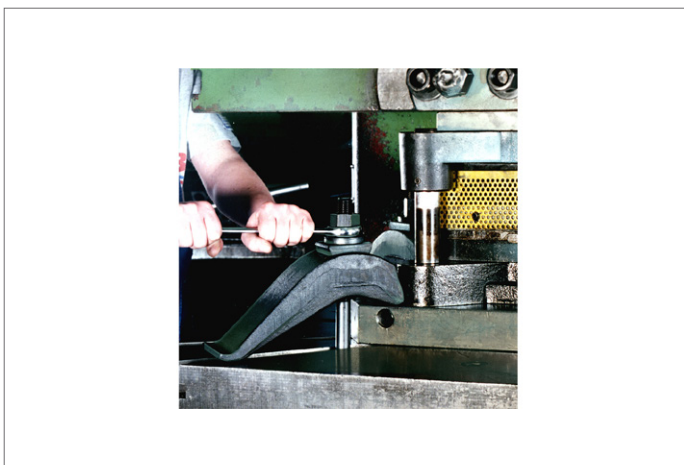
support required.

Used with:

21000 T-slot bolts, 24400 collar nuts,

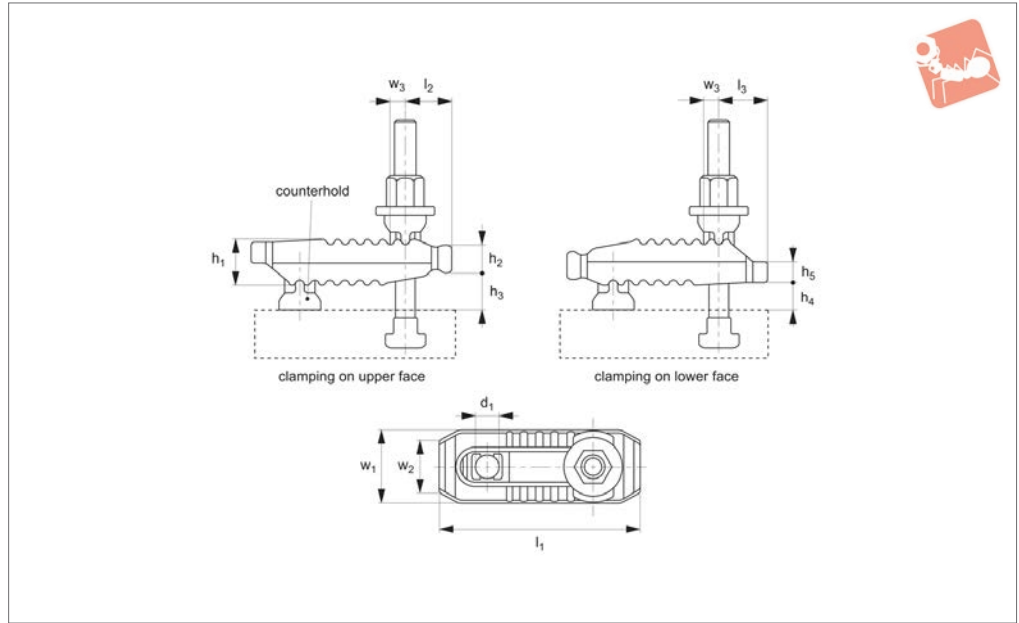
25000 plain washer.

Order No.	Type	T-bolt	For T-bolt	For T-slot	$d_1 \times l_1$	h_1	l_2	l_3	l_4	l_5	w_1	Weight g
10600.W0012	Clamp set	M12x12x125	M12 - M16	12	17x140	0-50	110	60	55	30	50	1070
10600.W0014	Clamp set	M12x14x125	M12 - M16	14	17x140	0-50	110	60	55	30	50	1080
10600.W0016	Clamp set	M16x16x160	M12 - M16	16	17x140	0-75	110	60	55	30	50	1270
10600.W0018	Clamp set	M16x18x160	M12 - M16	18	17x140	0-75	110	60	55	30	50	1280
10600.W0020	Clamp set	M20x20x200	M18 - M20	20	21x175	0-85	135	80	70	40	60	2300
10600.W0022	Clamp set	M20x22x200	M18 - M20	22	21x175	0-85	135	80	70	40	60	2370
10600.W0117	Clamp only	-	M12 - M16	-	17x140	0-75	110	60	55	30	50	900
10600.W0121	Clamp only	-	M18 - M20	-	21x175	0-85	135	80	70	40	60	1600





10603



Material

Clamp: steel, tempered and galvanised.
 T-bolt: steel, forged (strength class 8.8).
 See part 21000 for details.
 Washer: steel, hardened. See part 25000 for details.
 Nut: steel, heat-treated to strength class 10. See part 24300 for details.

Technical Notes

Ideal for clamping components of varying

heights - requires no additional support or packing pieces.
 Continuously adjustable clamp over range of heights (see dimension h_1 in table), with high clamping force.
 Support heel and stud counterhold are non-detachable, making for a single piece clamp which is quick and easy to use.
 Supplied complete with T-bolt, washer and T-nut (see data table).

Ideal for use on press tools and injection mould tools. Height can be increased by using Support Extensions 10604.

Tips

*Clamping forces based on using stud and nut of strength class 8.8 or better, optimal positioning of the clamp and good condition of the thread.

Order No.	T-bolt	For T-slot	h_1	h_2	h_3 min. max.	h_4	h_5	l_2	l_3	$w_1 \times l_1$	w_2	w_3	d_1	Clamping force kN max.	Weight g
10603.W0011	M10x10x100	10	27	17	0-40	18	12	25	30	44x115	30	11	13	25	613
10603.W0012	M12x12x125	12	27	17	0-55	18	12	25	30	44x115	30	11	13	30	686
10603.W0013	M12x12x160	12	36	21	0-70	20	17	35	36	55x150	41	12	17	35	1591
10603.W0014	M12x14x125	14	27	17	0-55	18	12	25	30	44x115	30	11	13	30	705
10603.W0015	M12x14x160	14	36	21	0-70	20	17	35	36	55x150	41	12	17	35	1610
10603.W0016	M16x16x160	16	36	21	0-70	20	17	35	36	55x150	41	12	17	40	1798
10603.W0017	M16x16x200	16	42	27	0-80	30	20	44	44	62x187	30	14	21	55	2715
10603.W0018	M16x18x160	18	36	21	0-70	20	17	35	36	55x150	41	12	17	40	1818
10603.W0020	M16x18x200	18	42	27	0-80	30	20	44	44	62x187	30	14	21	55	3018
10603.W0021	M20x20x200	20	42	27	0-80	30	20	44	44	62x187	30	14	21	60	3018
10603.W0022	M20x22x200	22	42	27	0-80	30	20	44	44	62x187	30	14	21	60	3060
10603.W0023	M20x20x250	20	51	34	0-100	31	24	60	47	70x235	30	17	25	70	4368
10603.W0024	M24x24x250	24	51	34	0-100	31	24	60	47	70x235	30	17	25	75	4895
10603.W0025	M20x22x250	22	51	34	0-100	31	24	60	47	70x235	30	17	25	70	4410
10603.W0028	M24x28x250	28	51	34	0-100	31	24	60	47	70x235	30	17	25	75	4966



Crocodile Clamp Support Extension

recommendations

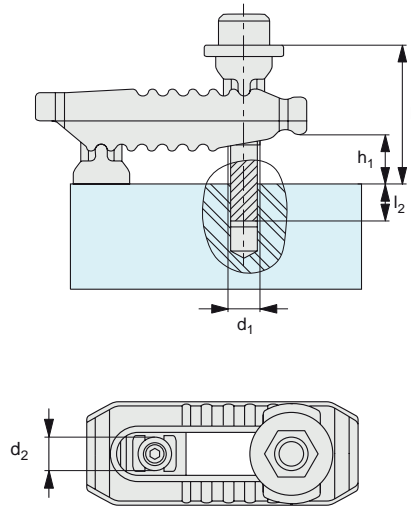


10603

Clamping & Height Setting

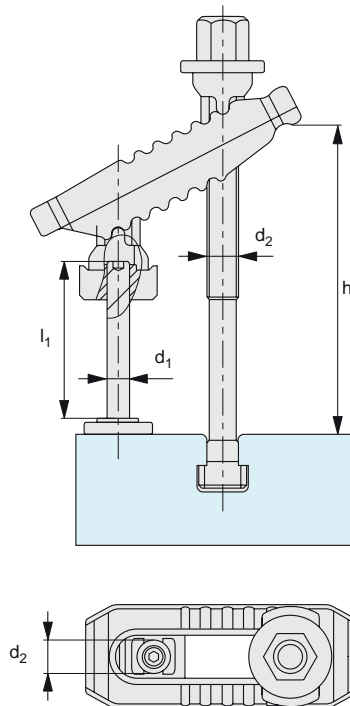
Installation Recommendations

Installation dimensions for clamp 10603 (without support extension 10604) when using clamping stud 21100.



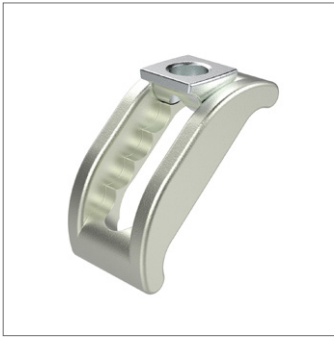
d_2	Stud 21100 size $d_1 \times l_1$	Thread depth l_2	Achievable clamping range height h_1
13	M10x80	15-31	4-25
	M10x90	15-31	17-40
	M10x100	15-31	4-25
	M12x80	18-33	0-20
	M12x90	18-33	10-34
	M12x100	18-33	22-50
17	M12x90	18-33	0-22
	M12x110	18-33	24-50
	M12x120	18-33	38-66
	M16x100	24-43	0-26
	M16x110	24-44	12-40
	M16x120	24-44	26-55
21	M16x120	24-44	2-29
	M16x130	24-44	15-43
	M16x150	24-44	43-72
	M20x140	30-52	18-48
	M20x150	30-52	31-63
	M20x160	30-52	45-78
25	M20x160	30-52	23-54
	M20x180	30-52	51-83
	M20x195	34-52	72-100
	M24x160	36-48	0-15
	M24x180	36-60	10-42
	M24x195	36-60	37-71

Installation dimensions for clamp 10603 (with support extension 10604) when using T-slot bolt 21000.

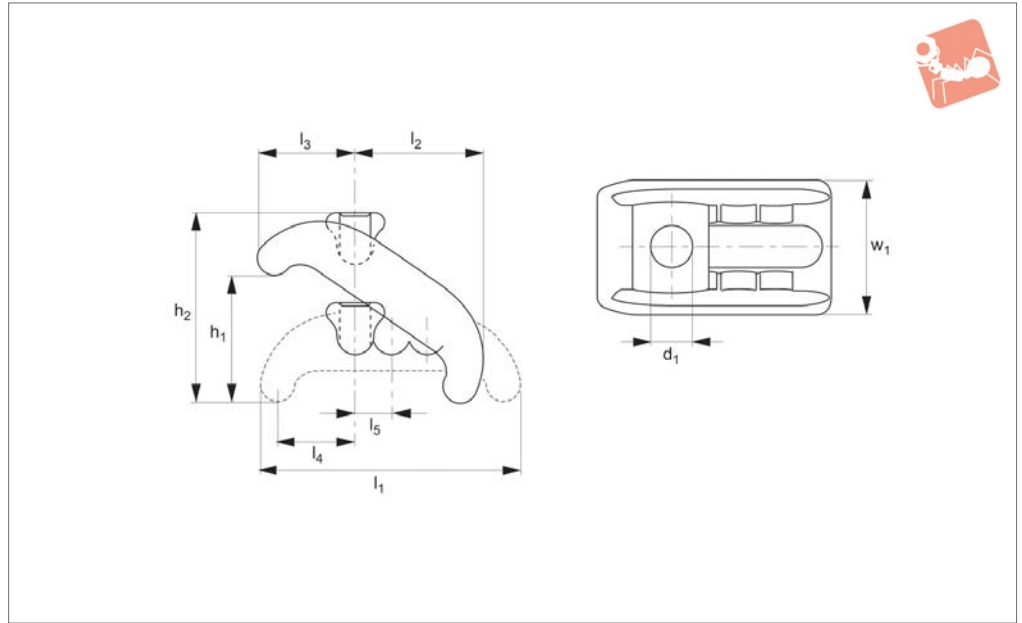


d_2	10604 support extension $d_1 \times l_1$	T-Slot 21000 $d_2 \times \text{T-slot} \times l_1$	Achievable clamping range height h_1
13	M10x39	M10x10x100	18-31
	M10x39	M12x12x160	18-95
	M10x39	M12x14x160	18-95
	M12x49	M12x12x200	26-123
	M12x49	M12x14x200	26-123
	M12x49	M16x16x200	26-123
17	M12x49	M16x18x200	26-123
	M12x94	M12x12x200	26-120
	M12x94	M12x14x200	26-120
	M12x94	M16x16x250	26-166
	M12x94	M16x18x250	26-166
	M16x55	M16x16x250	33-141
21	M16x55	M16x18x250	33-141
	M16x55	M20x20x250	33-141
	M16x55	M20x22x250	33-141
	M16x90	M16x16x250	33-150
	M16x90	M16x18x250	33-150
	M16x90	M20x20x315	33-173
25	M16x90	M20x22x315	33-173
	M20x69	M20x20x315	41-177
	M20x69	M20x22x315	41-177
	M20x69	M24x24x315	41-177
	M20x69	M24x28x315	41-177
	M20x109	M20x20x315	41-197
25	M20x109	M20x22x315	41-193
	M20x109	M24x24x315	41-180
	M20x109	M24x28x315	41-180

ov-W10603-A-T-support-extension-recommendations-rmh- Updated - 20-10-2022



10620



Material

Steel, tempered and galvanised.

body has a long slot for easy positioning.

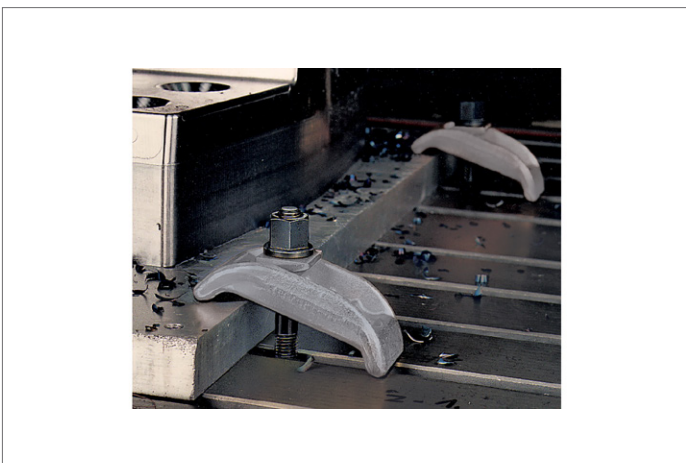
Technical Notes

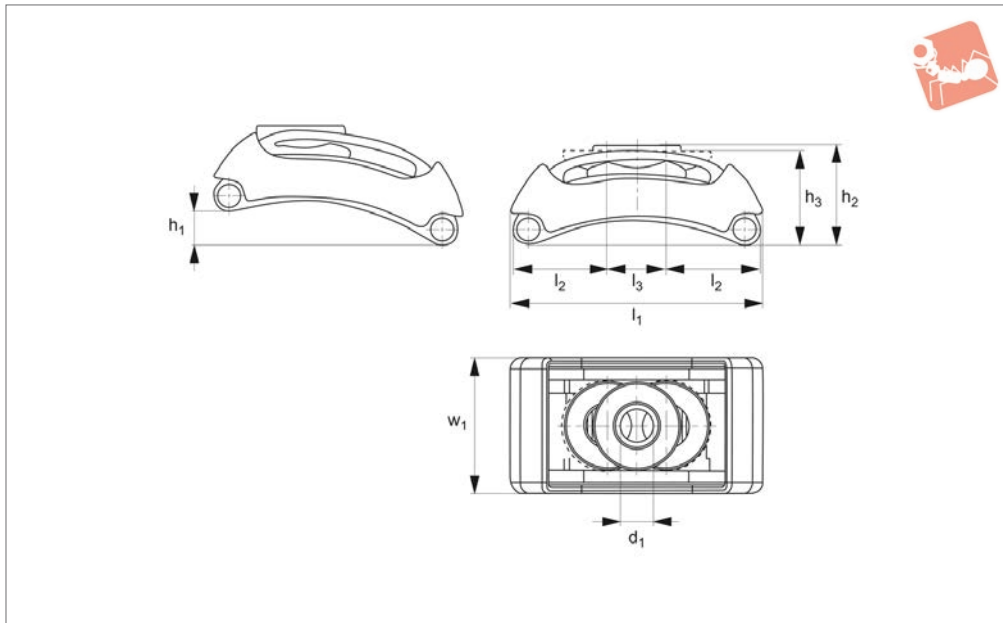
Ideal for press tool clamping. The clamp

Tips

Supplied without T-bolt or nut - for these parts see nos. 21000 and 24400.

Order No.	Clamping height h_1 min. max.	For T-slot	For bolt	h_2 min. max.	l_2	l_3	l_4	l_5	$w_1 \times l_1$	d_1	Weight g
10620.W0012	0-35	12 & 14	M12	30-55	48	28	23	14	38x88	13	260
10620.W0016	0-55	16 & 18	M16	42-84	74	38	29	18	56x130	18	809
10620.W0020	0-65	20 & 22	M20	50-100	80	46	32	20	66x140	22	1253
10620.W0026	0-75	24 & 28	M24	54-111	100	52	39	24	76x174	26	1718
10620.W0032	0-80	36	M30	62-125	110	61	44	28	90x200	32	2785





10630.1

ADJUSTABLE VERTICAL CLAMPS

Material

Steel, tempered and burnished.

Technical Notes

Weight-saving thanks to its lightweight design. Variable and fast adjustment at a distance from the workpiece. No additional

clamping supports are needed to reach the required clamping height. The U-piece is undetachable from the clamp.

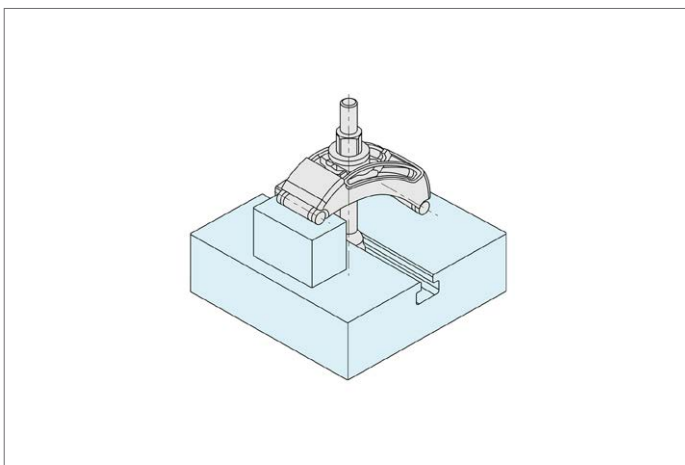
Tips

For clamping, clamping bolts no. 21000 and studs no. 21100 and cheese head

screws (ISO 4762) can be used.

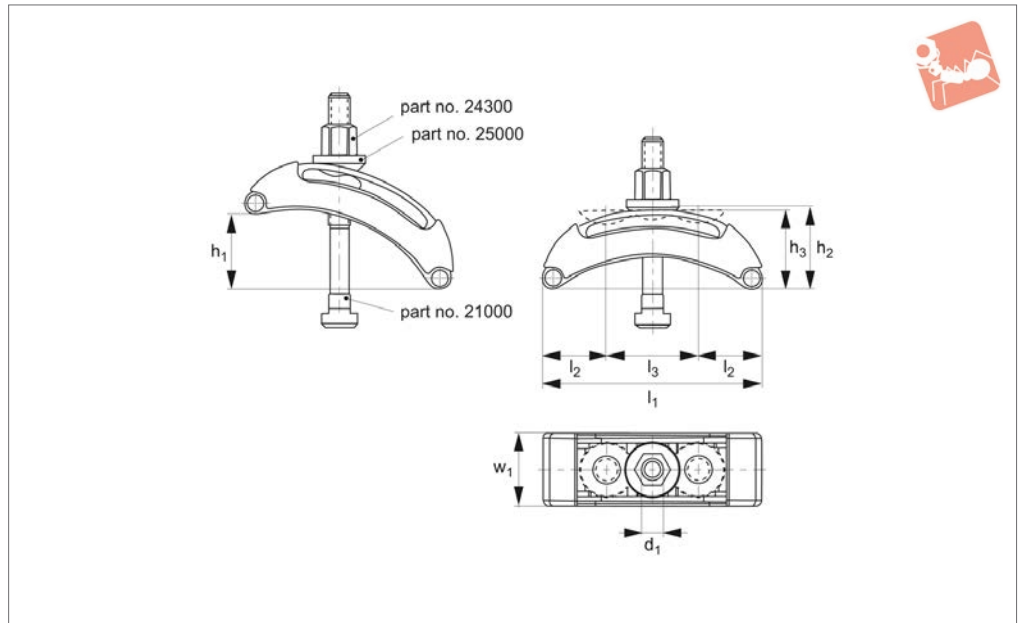
A washer no. 25000 must always be used between the hexagonal nut and U-piece. h_1 is dependent on depth of slot to DIN 650 and position of fixture nut.

Order No.	Size	For clamping screw	h_1 min. max.	h_2	h_3	l_1	l_2	l_3	w_1	d_1	Weight g
10630.W0010	10	M10	0-15	32.0	30.5	80	30	19	44	11	257
10630.W0014	14	M12-M14	0-33	49.5	47.0	125	37	51	57	14	708
10630.W0018	18	M16-M18	0-45	62.0	58.5	160	49	63	67	18	1235
10630.W0022	22	M20-M22	0-65	75.0	71.5	200	58	63	72	22	1880
10630.W0026	26	M22-M24	0-85	94.0	89.5	250	74	0	82	16	2799





10630.2



Material

Steel, tempered and burnished.

Technical Notes

Complete with T-bolt set. Weight-saving thanks to its lightweight design. Variable

and fast adjustment at a distance from the workpiece. No additional clamping supports are needed to reach the required clamping height. The U-piece is undetachable from the clamp.

Tips

A washer (DIN 6340) must always be used between the hexagonal nut and U-piece. h_1 is dependent on depth of slot to DIN 650 and position of fixture nut.

Order No.	Size	With clamping bolt	h_1 min. max.	h_2	h_3	l_1	l_2	l_3	w_1	d_1	Weight g
10630.W0110	10	M10x10x80	0-15	32.0	30.5	80	30	19	44	11	349
10630.W0112	12	M12x12x100	0-33	49.5	47.0	125	37	51	57	14	886
10630.W0114	14	M12x14x125	0-33	49.5	47.0	125	37	51	57	14	905
10630.W0116	16	M16x16x160	0-45	62.0	58.5	160	49	63	67	18	1648
10630.W0118	18	M16x18x160	0-45	62.0	58.5	160	49	63	67	18	1668

